

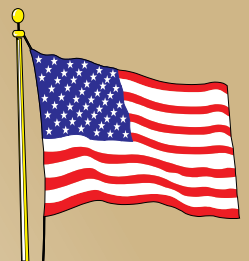


Building  
**AMERICA'S**  
Future... Today!



**P**ROFESSIONAL  
**B**UILDING  
**S**YSTEMS, INC.

Vacation Homes



Made in USA

# SOMERSET I

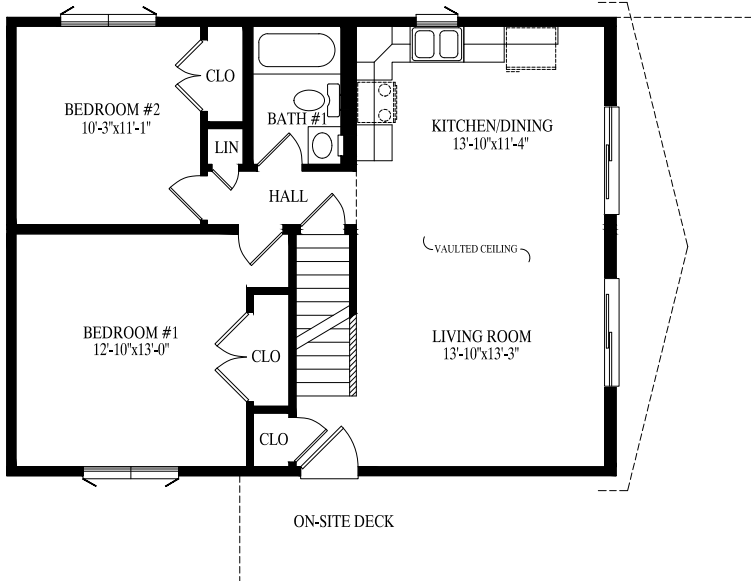


## Somerset I

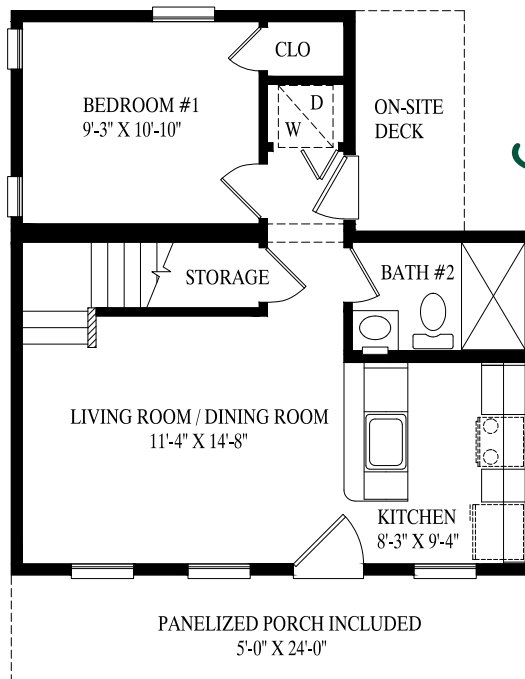
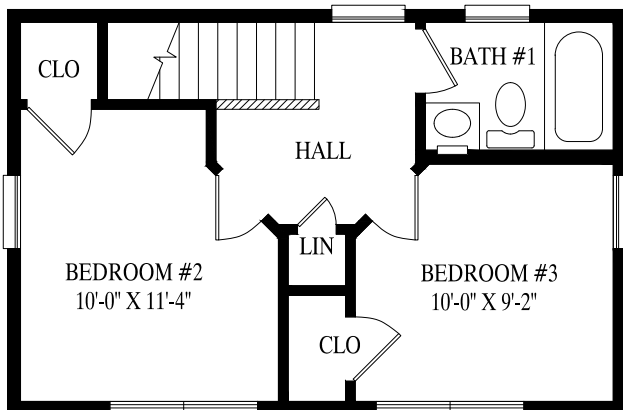
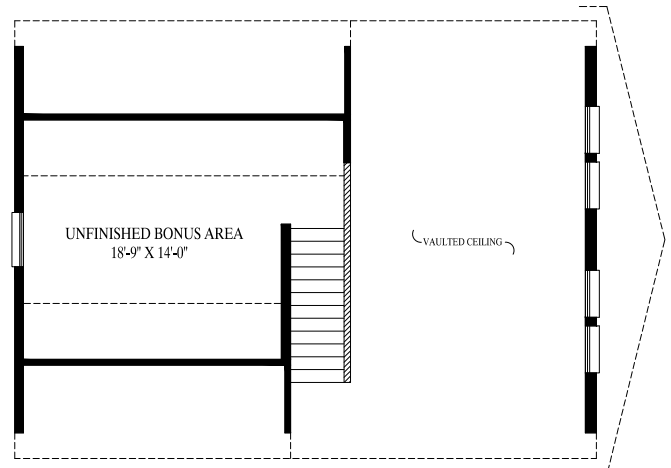
25' 7" x 34'

870 sq. ft. first floor

287 sq. ft. unfinished  
second floor



Featured on the rear cover



# SHILOH



## Shiloh

25' 9" x 24'

535 sq. ft. first floor

337 sq. ft. second floor

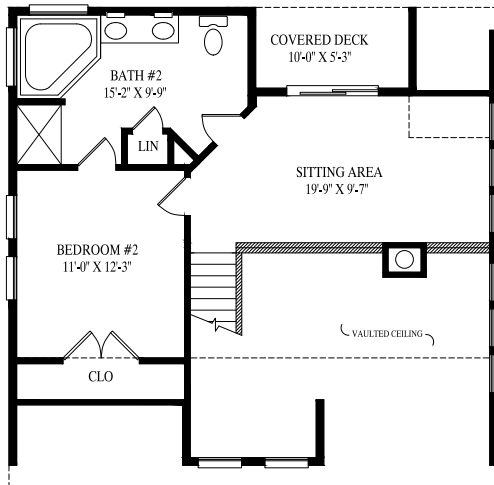
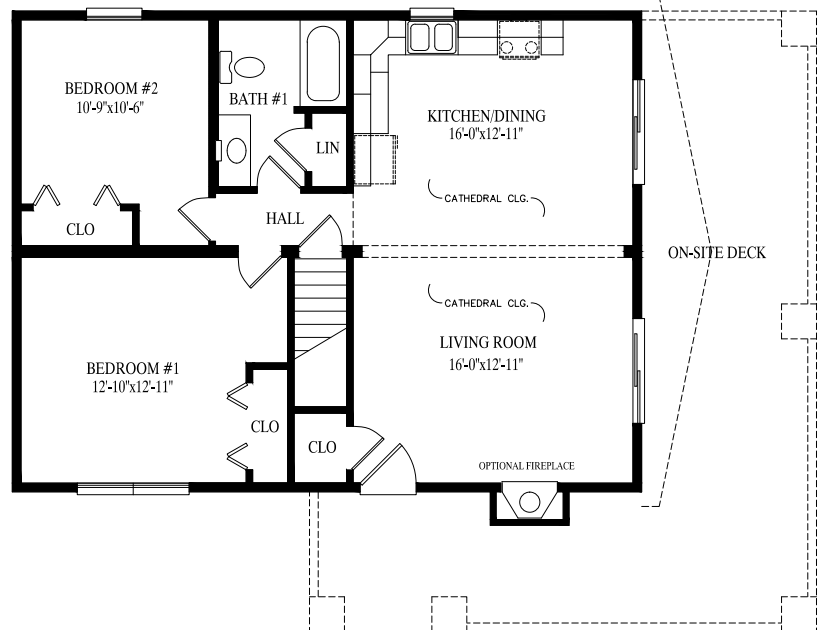
872 total sq. ft.



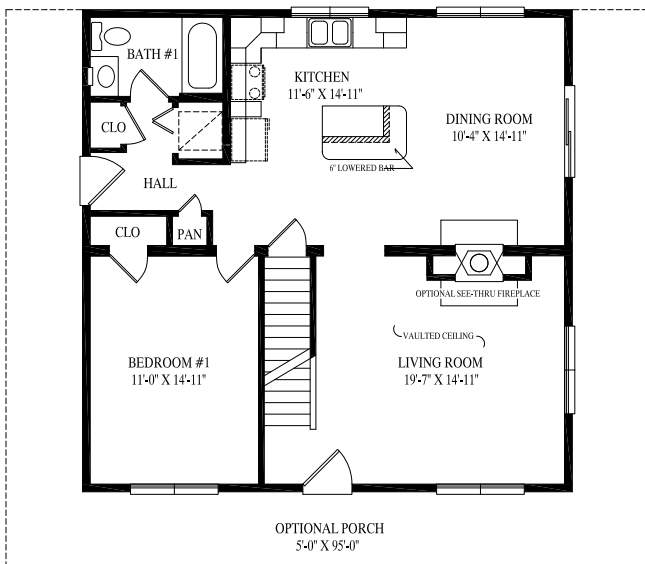


**Aspen**  
27' 6" x 36'  
993 sq. ft.

ASPEN



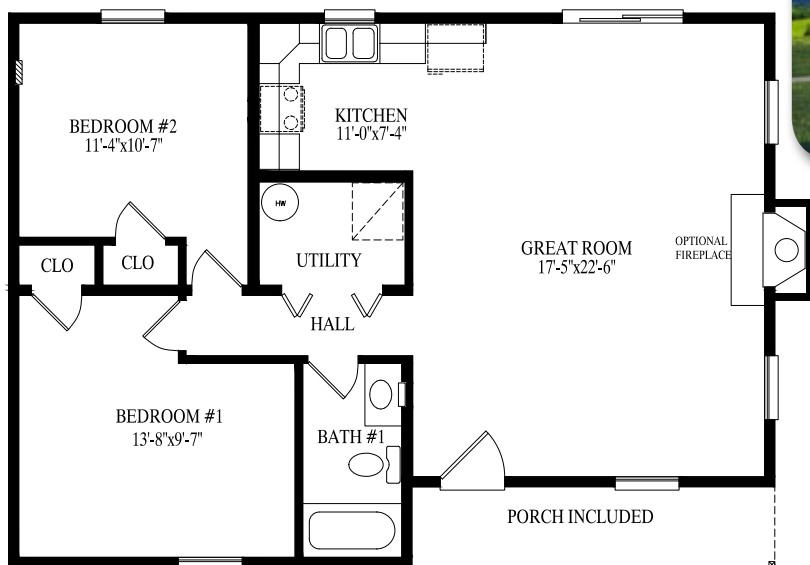
**Pike**  
31' 6" x 32'  
1008 sq. ft. first floor  
530 sq. ft. proposed second floor  
1538 total sq. ft.



Featured on the front cover

PIKE

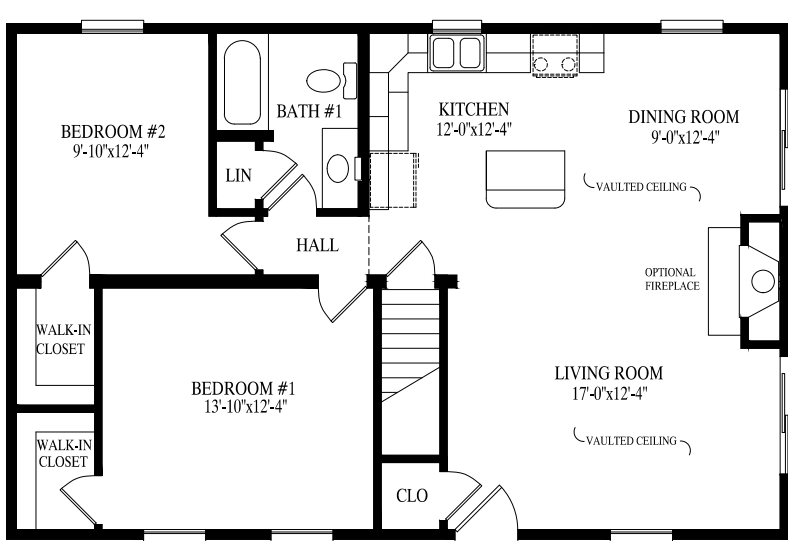
# BRISTOL



## Bristol

27' 6" x 38'  
1045 sq. ft.

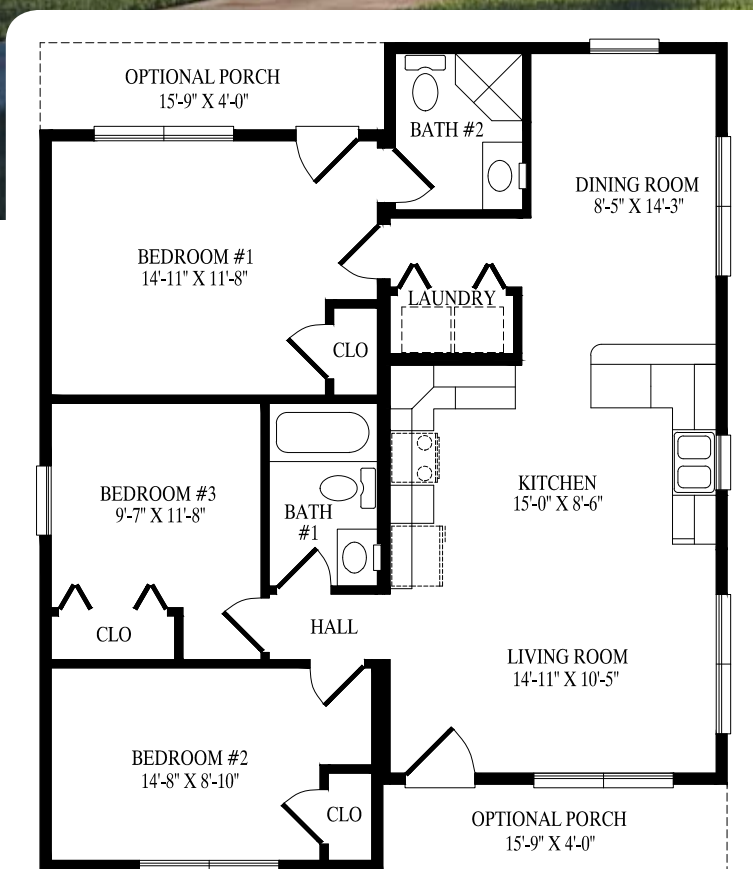
# BRYCE



## Bryce

26' 4" x 40'  
1053 sq. ft.





**Bayview**

31' 6" x 34'  
1071 sq. ft.



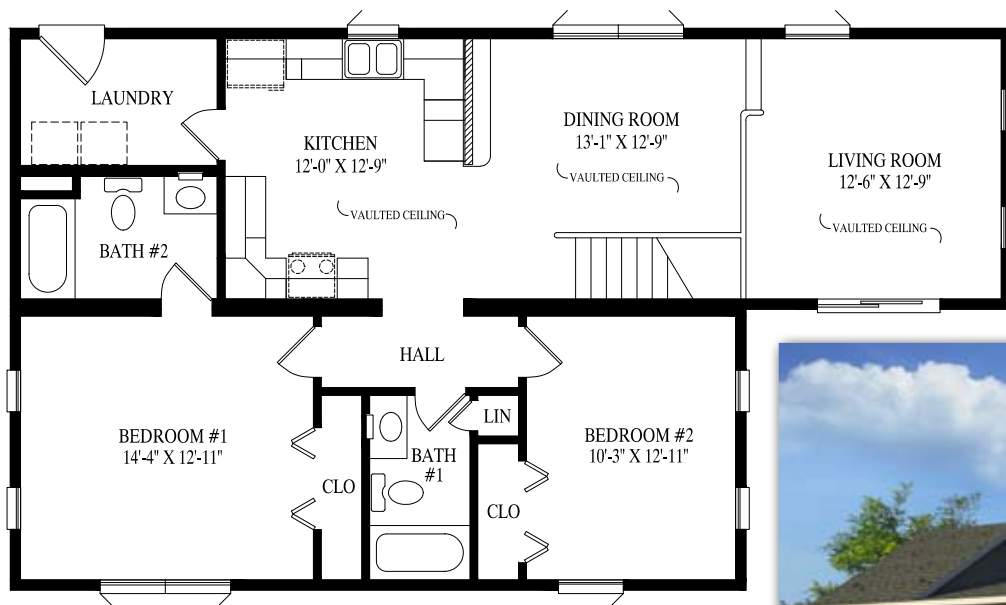
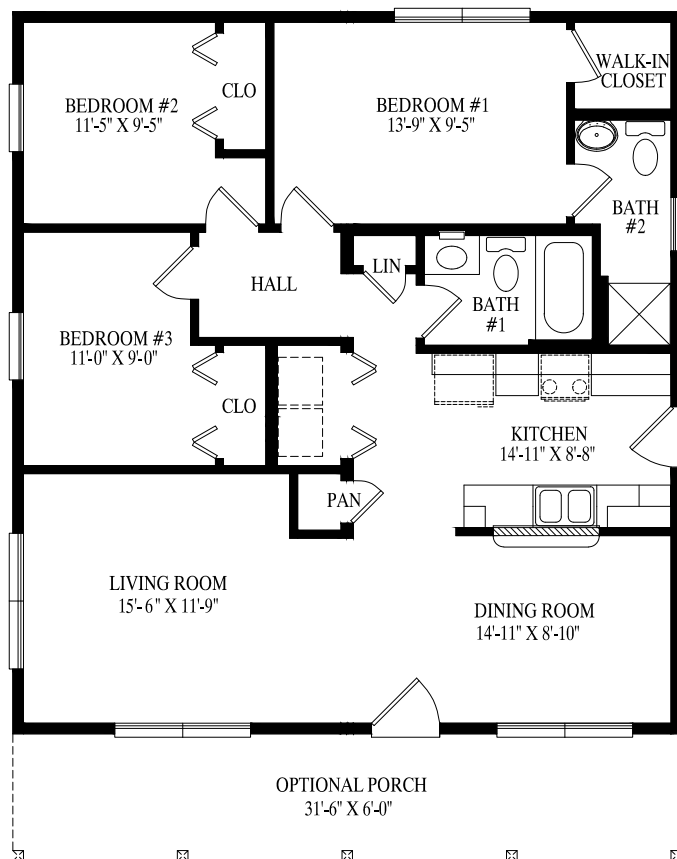
*BAYVIEW*

# BRIDGETOWN



## Bridgetown

31' 6" x 34'  
1071 sq. ft.



## Dakota

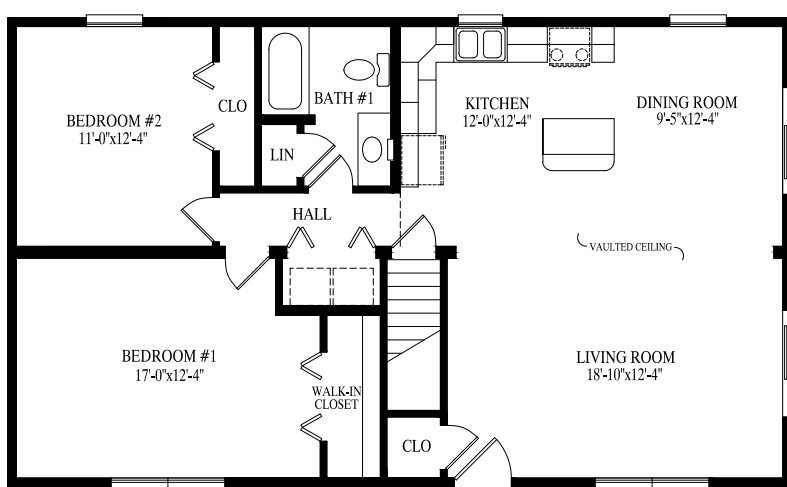
27' 6" x 49'  
1169 sq. ft.

# DAKOTA





# MAVERICK



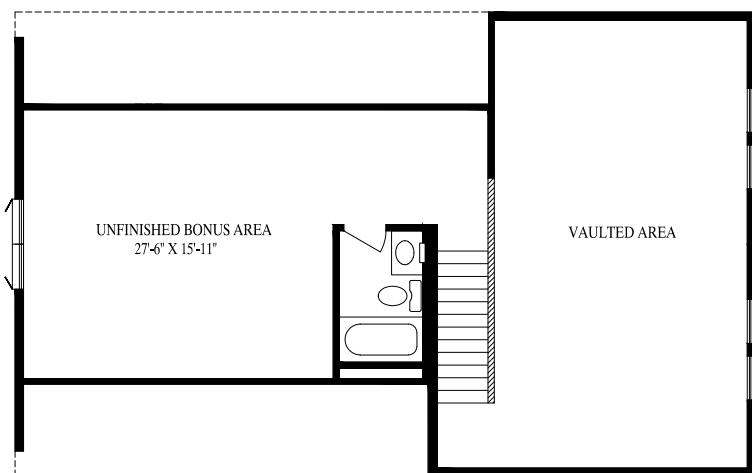
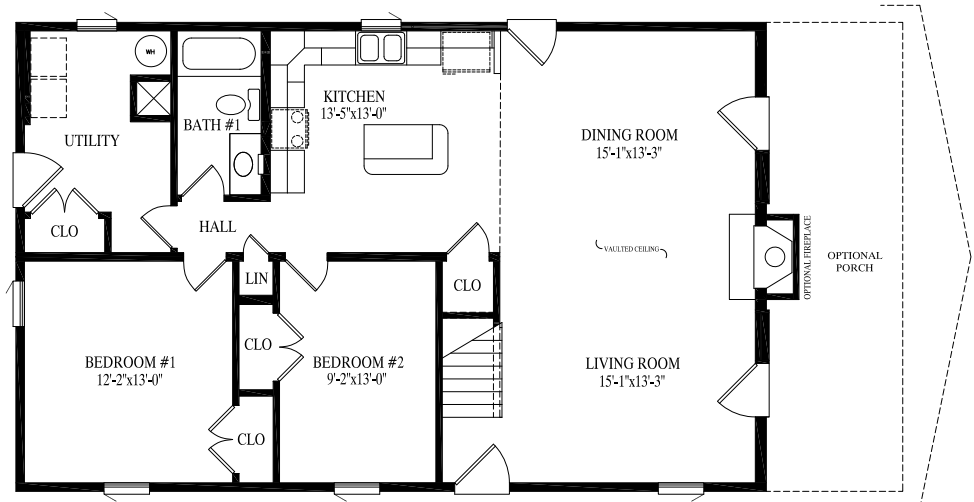
## Maverick

26' 4" x 44'  
1158 sq. ft.



## Somerset II

27' 6" x 44'  
1210 sq. ft. first floor  
440 sq. ft. unfinished second floor



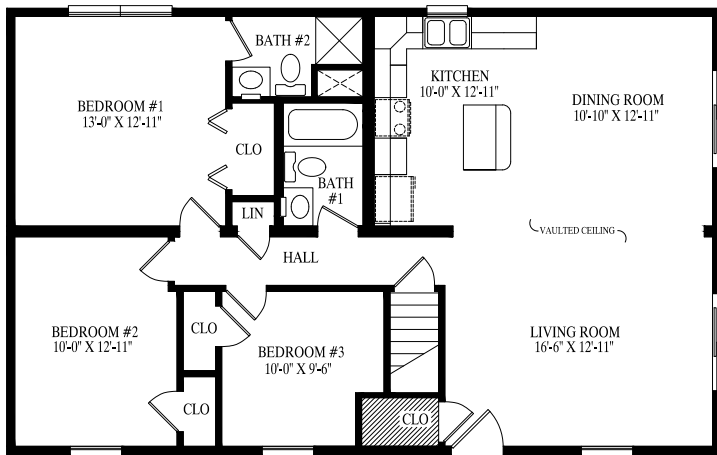
# SOMERSET II

# KENNEBUNK

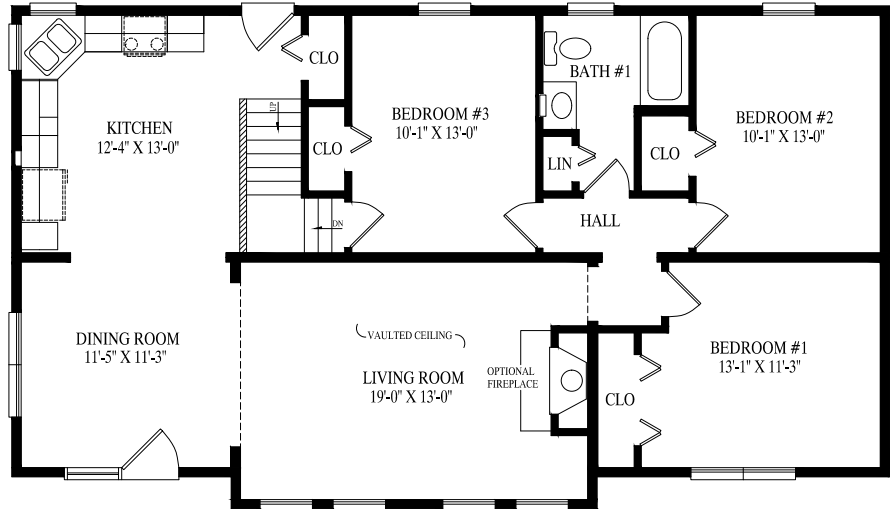


## Kennebunk

27' 6" x 44'  
1210 sq. ft.

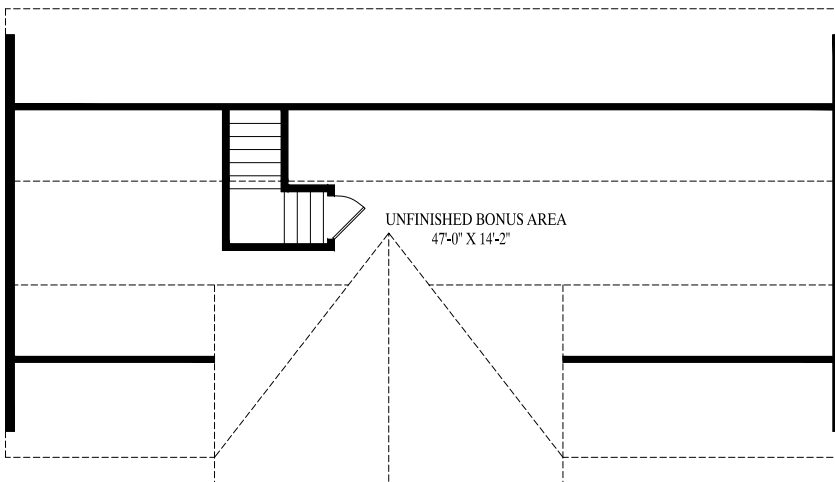


# ADIRONDACK



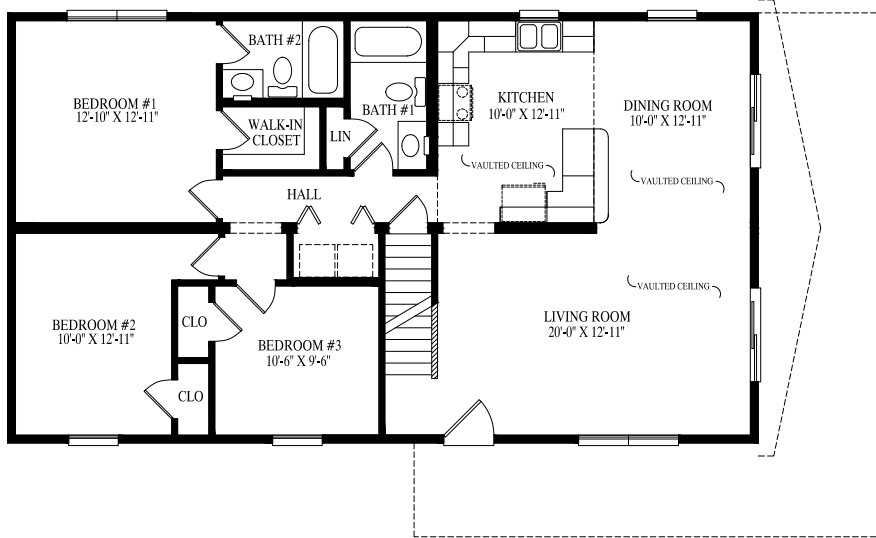
## Adirondack

27' 6" x 46'  
1271 sq. ft. first floor  
712 sq. ft. proposed second floor





# Booth Bay

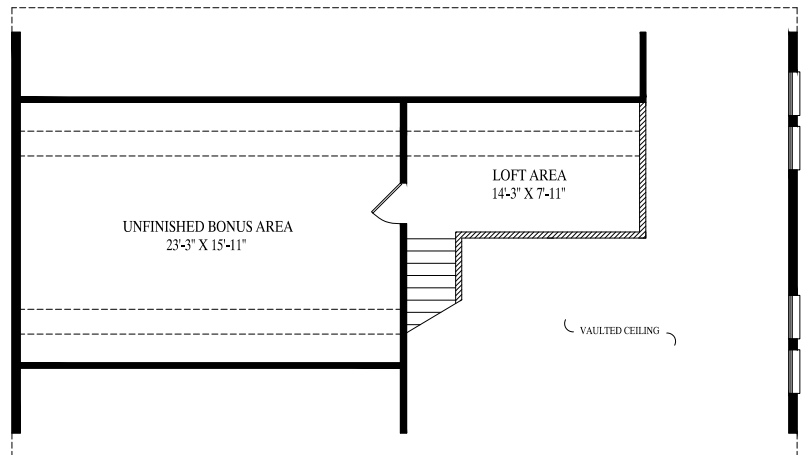


## Booth Bay

27' 6" x 48'

1320 sq. ft. first floor

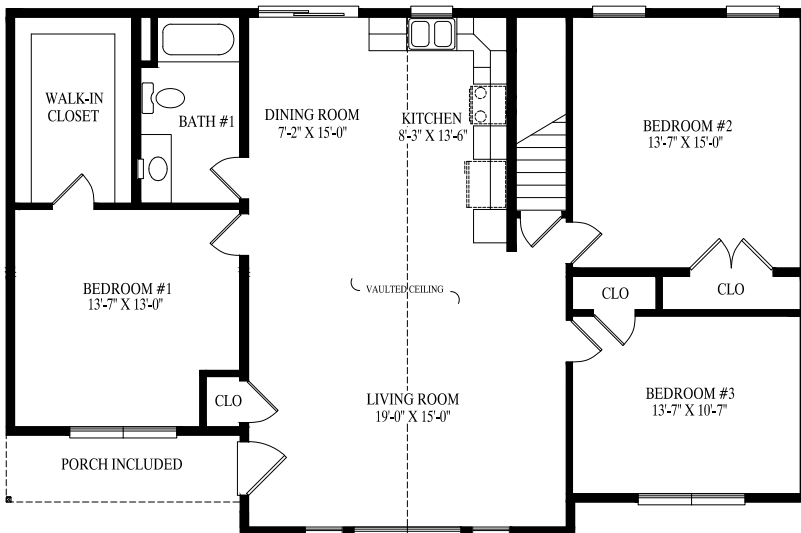
526 sq. ft. unfinished second floor



## Saybrook

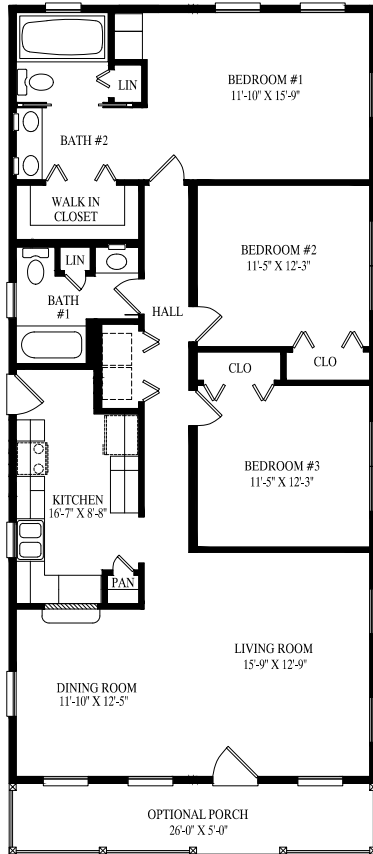
31' 6" x 48'

1400 sq. ft.



# SAYBROOK

# ST. CROIX

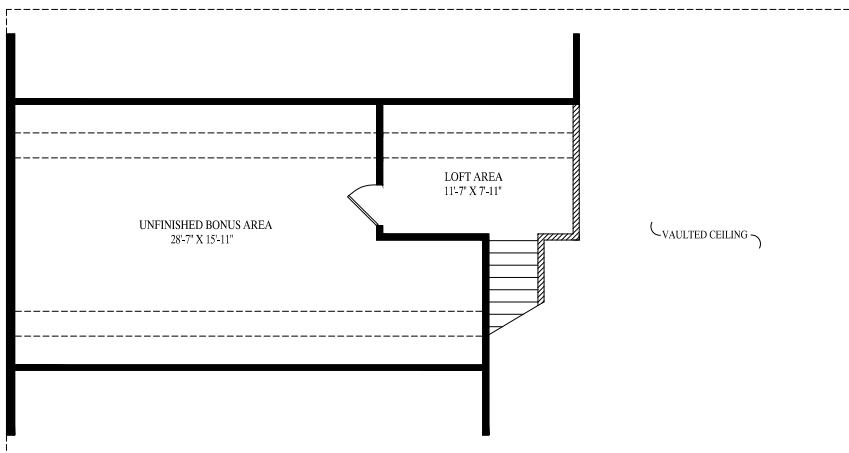
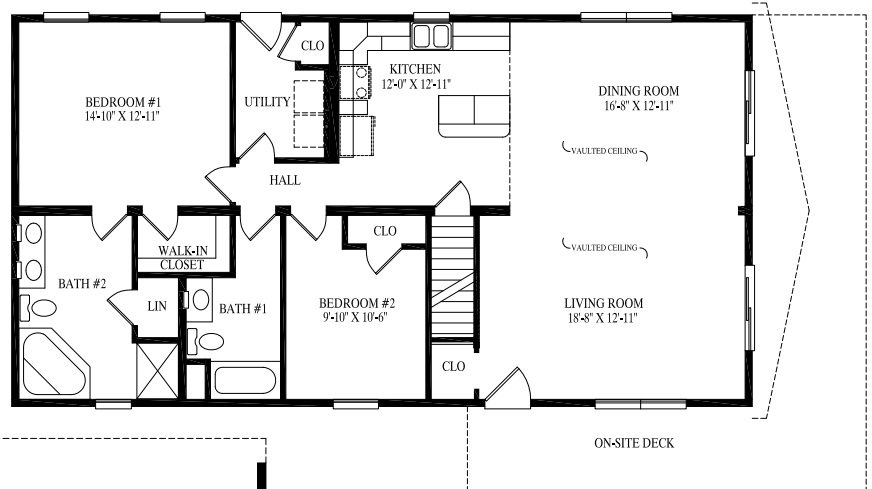


## St. Croix

26' x 55'  
1430 sq. ft.



# TISBURY



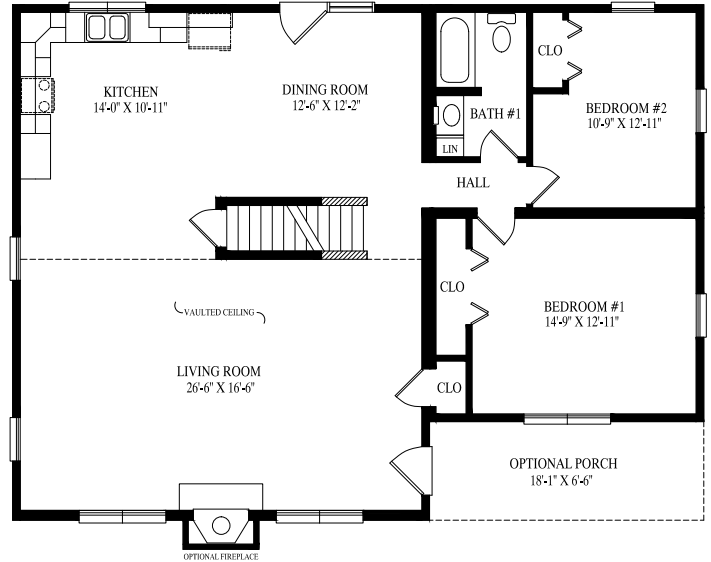
## Tisbury

27' 6" x 52'  
1430 sq. ft. first floor  
501 sq. ft. unfinished second floor





# SARANAC

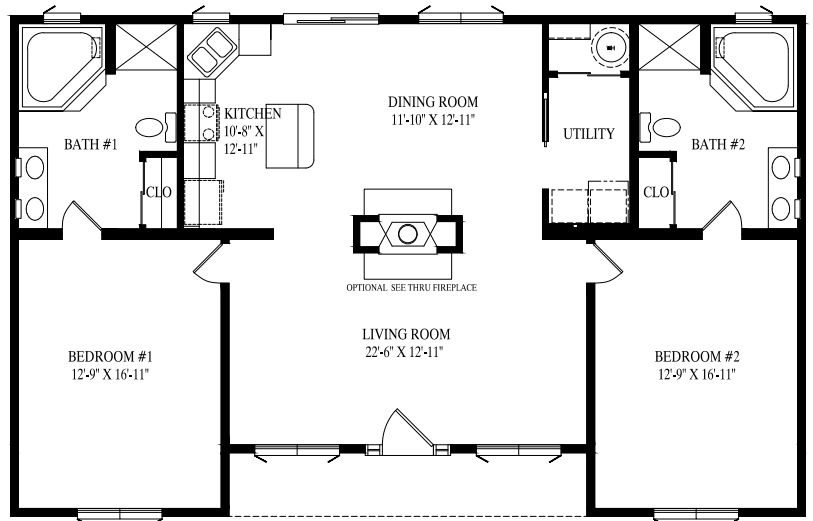
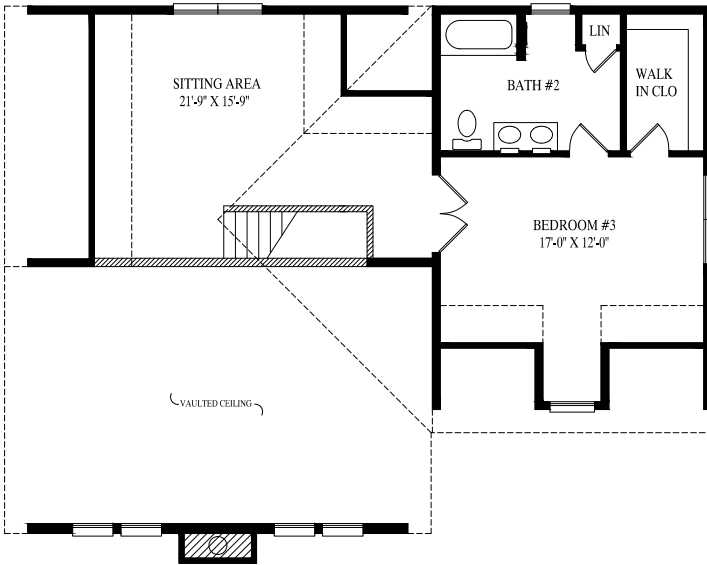


## Saranac

34' x 45' 7"

1432 sq. ft. first floor

787 sq. ft. proposed second floor



## Twin Peaks

31' 6" x 50'

1485 sq. ft.



# TWIN PEAKS

# SOMERSET III

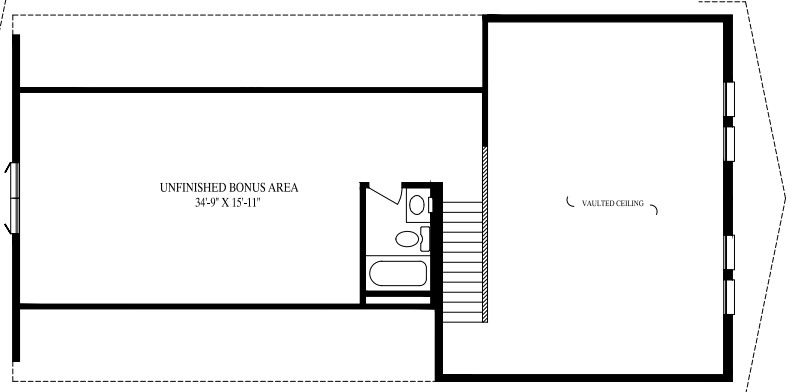
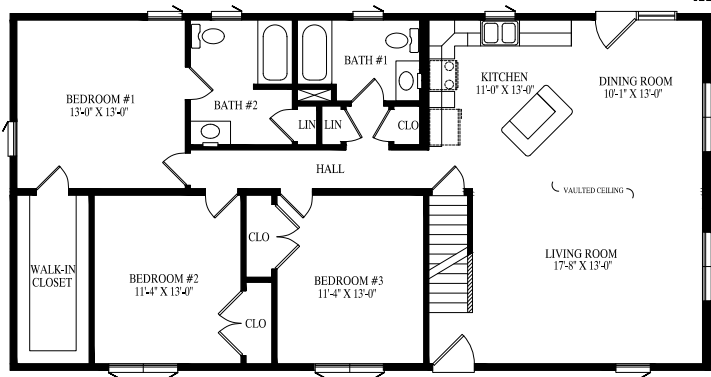


## Somerset III

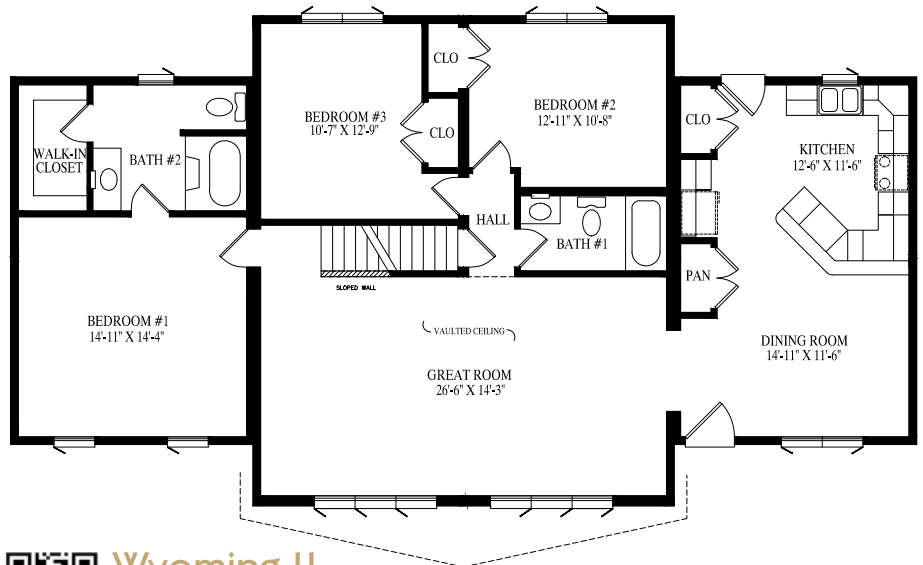
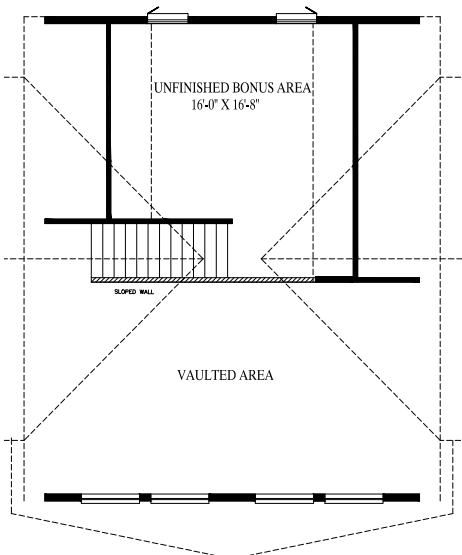
27' 6" x 54'

1485 sq. ft. first floor

590 sq. ft. proposed second floor



# WYOMING II



## Wyoming II

32' x 59' 2"

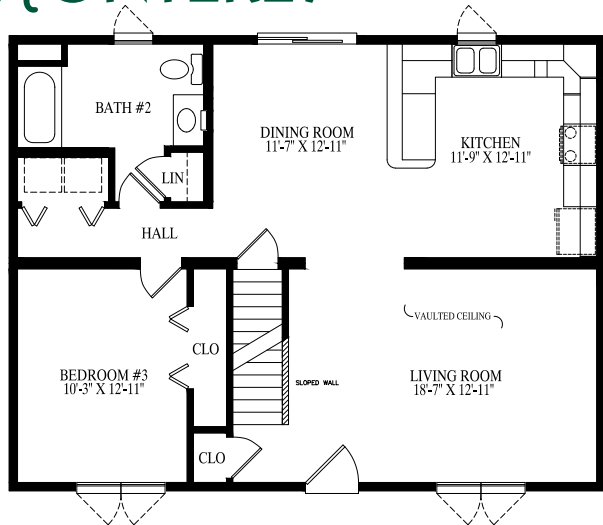
1641 sq. ft. first floor

290 sq. ft. unfinished second floor





# MONTEREY



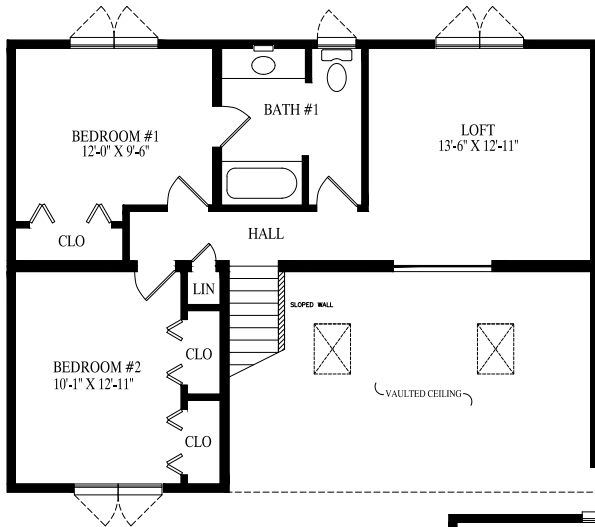
## Monterey

27' 6" x 36'

990 sq. ft. first floor

688 sq. ft. second floor

1678 sq. ft. total

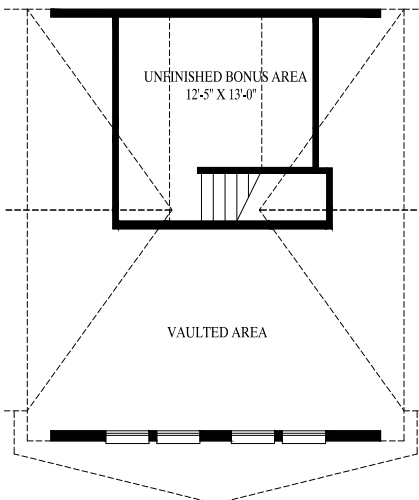
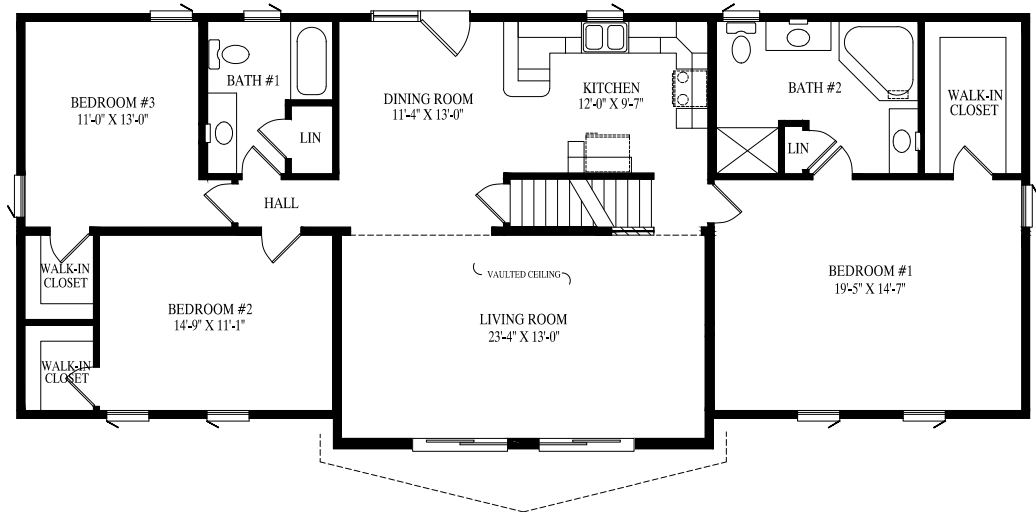


## Wyoming I

27' 6" x 64'

1683 sq. ft. first floor

186 sq. ft. unfinished second floor



# WYOMING I

# WYOMING III

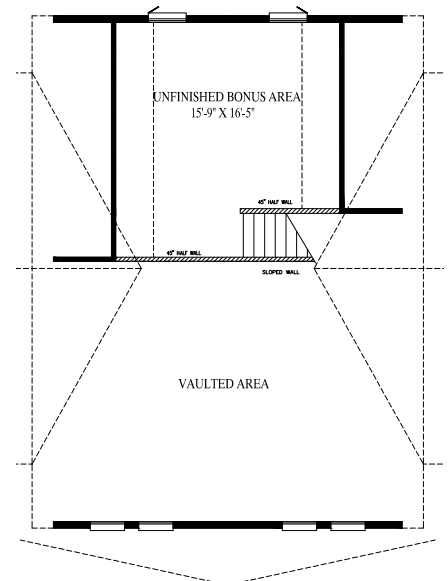
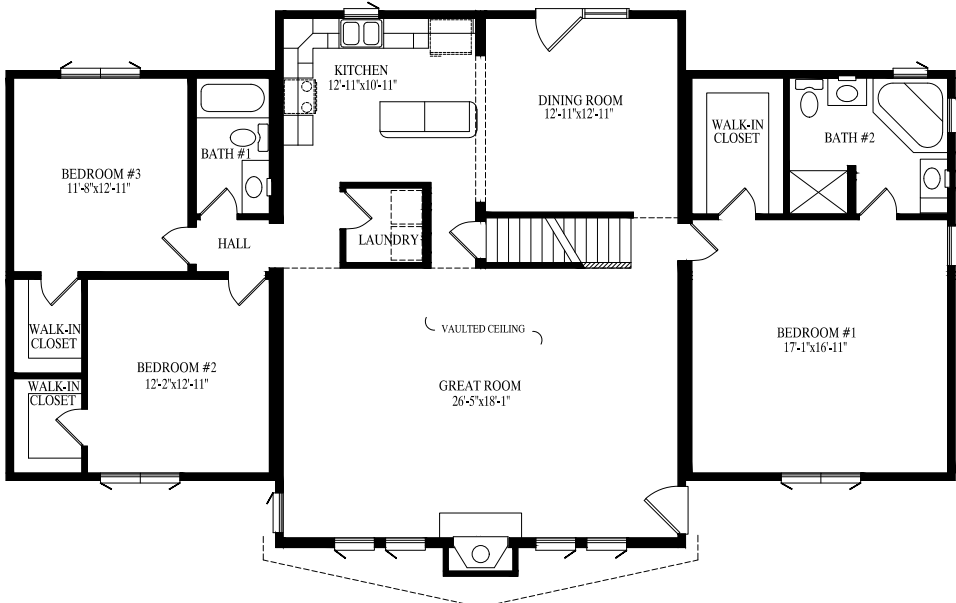


## Wyoming III

32' x 63' 8"

1985 sq. ft. first floor

198 sq. ft. unfinished second floor





# Popular Exterior Options...



7/12 Cathedral Ceiling  
with Trapezoid Windows



7/12 Vaulted Ceilings  
with Trapezoid Windows



9/12 Vaulted Ceiling with Trapezoid  
Windows and Sliding Glass Doors



9/12 Vaulted Ceiling with  
Custom Trapezoid Windows



12/12 Vaulted Ceiling with  
Trapezoid Windows over Windows



12/12 Vaulted Ceiling with Trapezoid  
Windows over Sliding Glass Doors



12/12 Vaulted Ceiling with Trapezoid  
Windows over Windows with Chimney



36" High Sloped Railing



36" High Sloped Wall

## Great Homes Start With Quality Products...

**CertainTeed**  
QUALITY MADE CERTAIN, satisfaction guaranteed.

**Clarion**  
BATHWARE

**DURON**  
PAINTS & WALLCOVERINGS

**Merillat.**  
Make perfect sense.

**MOEN**  
Buy it for looks. Buy it for life.®

**PLY GEM**  
WINDOWS

**RESIDENTIAL**  
**WARRANTY**  
**10 Year New Home Warranty**

**TAMKO**  
ROOFING PRODUCTS

**USG**

NOTE: All renderings are artist's concepts only and may vary from actual home.





**Professional Building Systems, Inc.**

72 East Market Street  
Middleburg, PA 17842  
Phone (570) 837-1424  
Fax (570) 837-6133  
[www.pbsmodular.com](http://www.pbsmodular.com)

Your PBS Builder/Developer

Builders/Developers are not agents of Professional Building Systems.