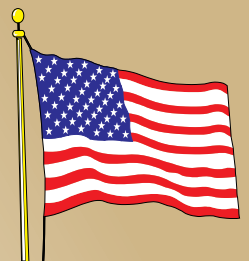




# Building **AMERICA'S** Future... Today!



## Multi-Family



Made in USA



## Three-Story

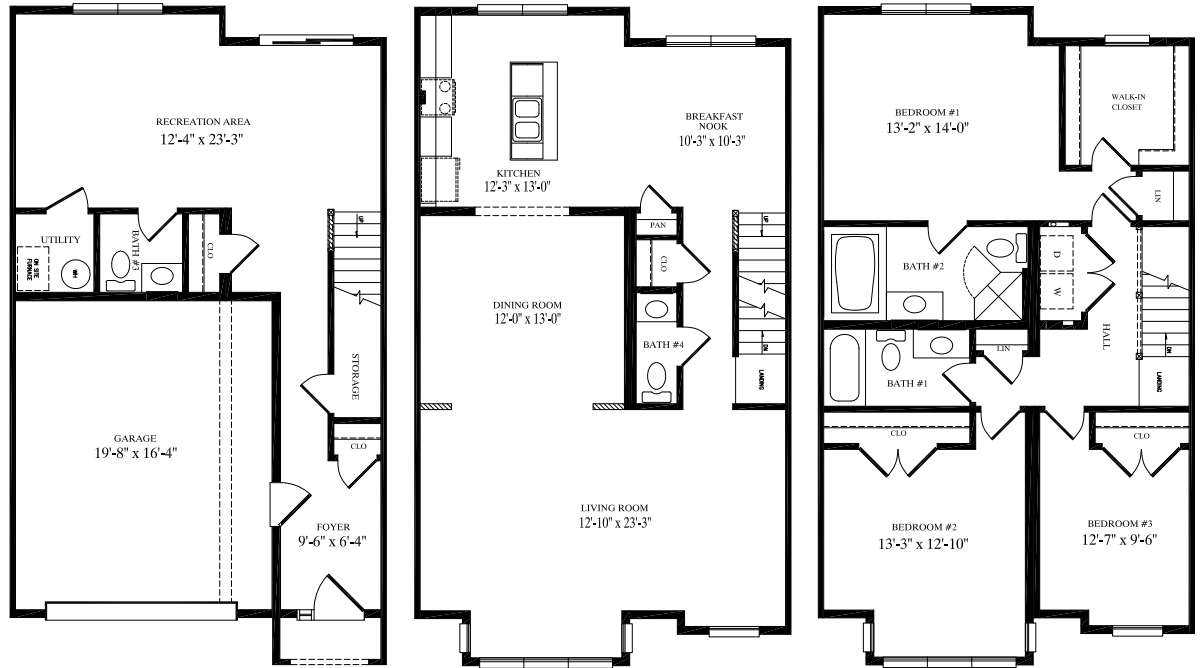
# TOWNHOUSE



### Brunswick

24' x 40'

Three-Story Townhouse  
2,847 sq. ft.



## Three-Story

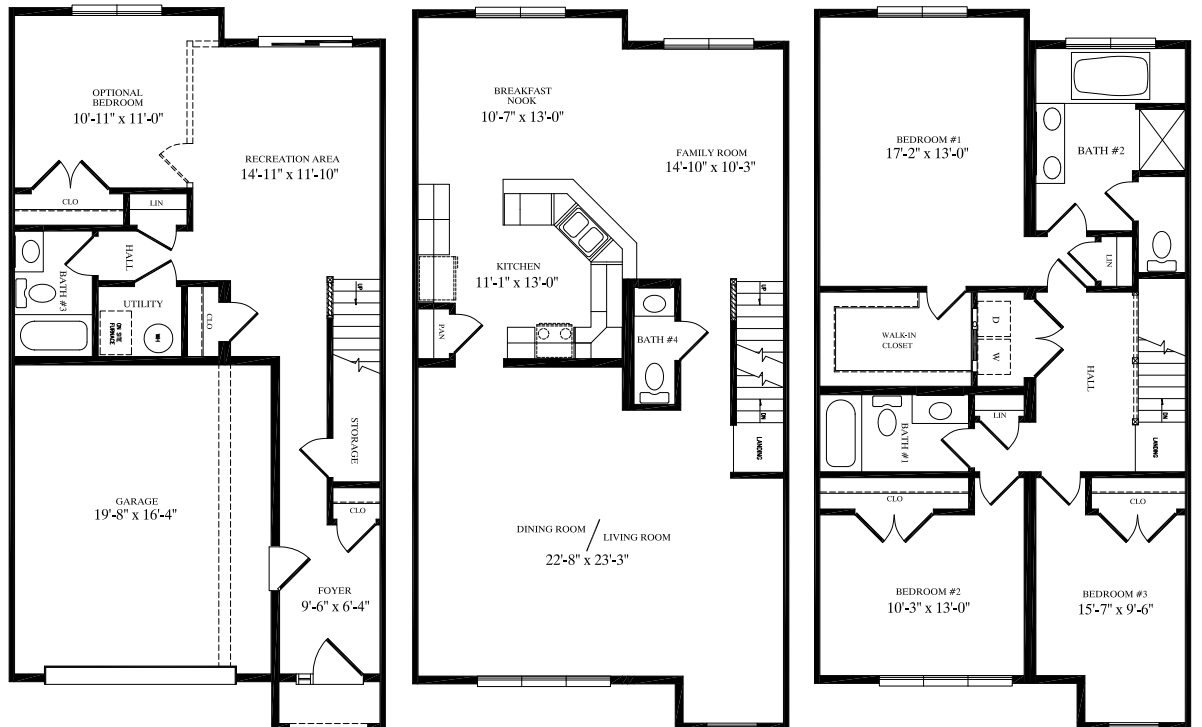
# TOWNHOUSE



### Burtonsville

24' x 43'

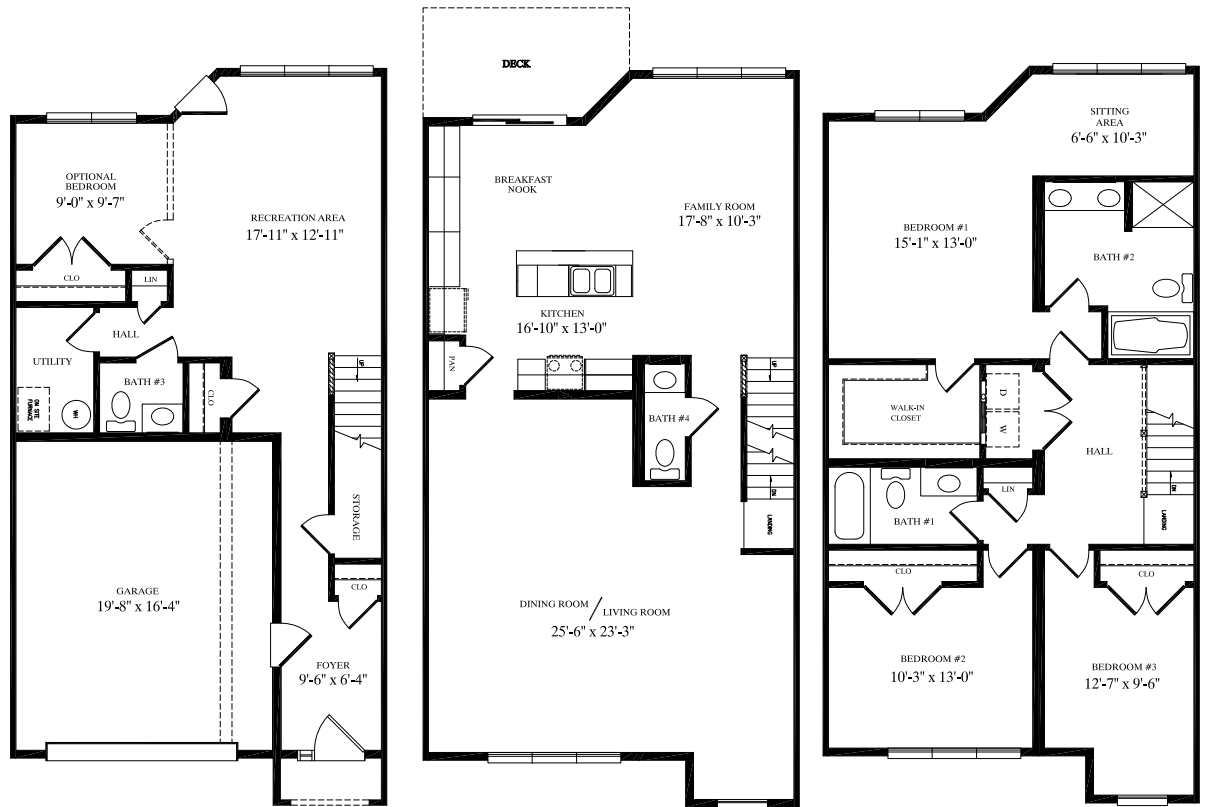
Three-Story Townhouse  
3,099 sq. ft.





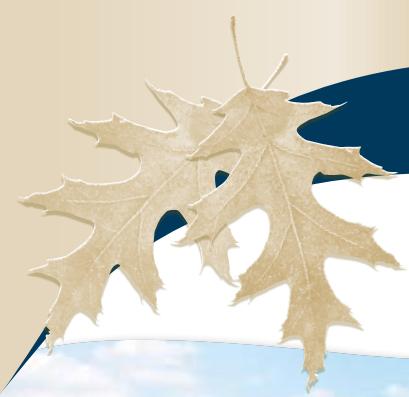


**Brookville**  
 24' x 47'  
 Three-Story Townhouse  
 3,129 sq. ft.



# Three-Story TOWNHOUSE





## Single-Story

# DUPLEX



### Eagles Mere

58' x 59'

Single-Story Duplex

1,669 sq. ft. unit 1

1,232 sq. ft. unit 2

2,901 sq. ft. total



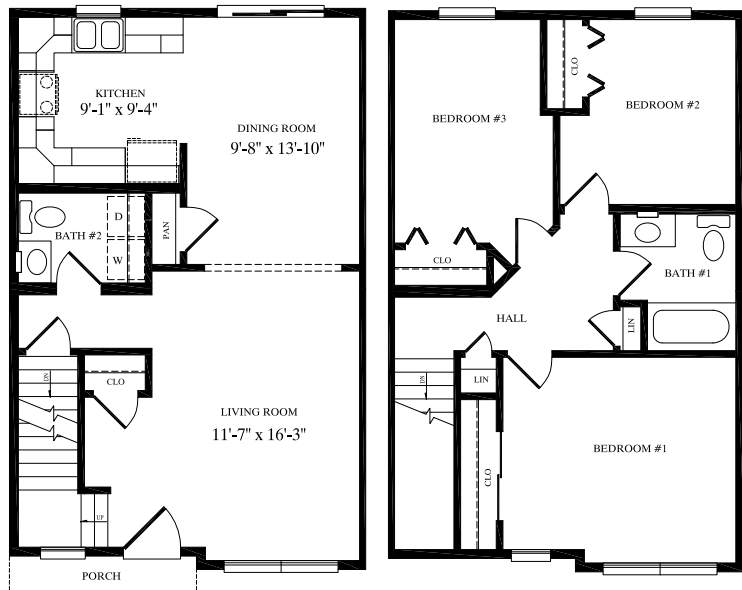
## Two-Story TOWNHOUSE

### Carlisle

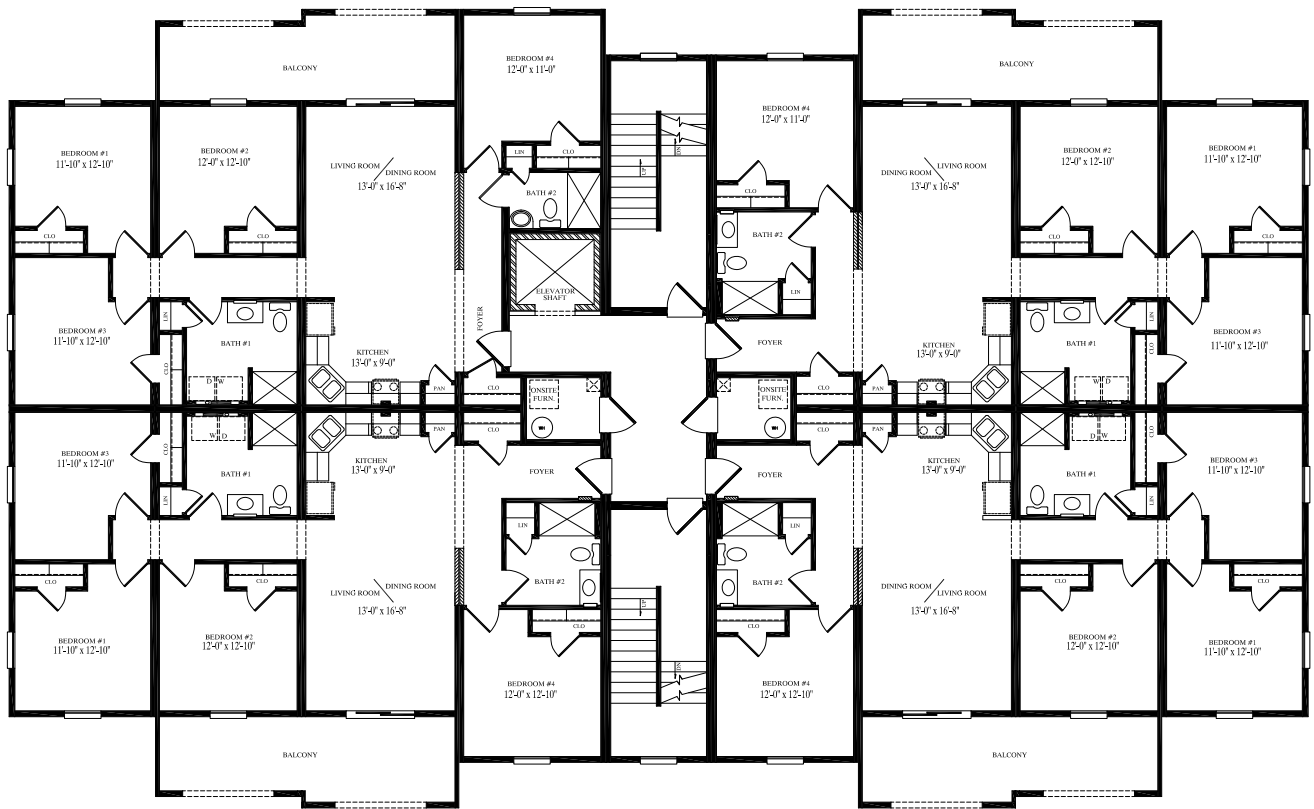
32' x 20'

Two-Story Townhouse

1,244 sq. ft.







## Hillsborough

70' x 114'

Four-Story Condominium

1,424 sq. ft. per living unit

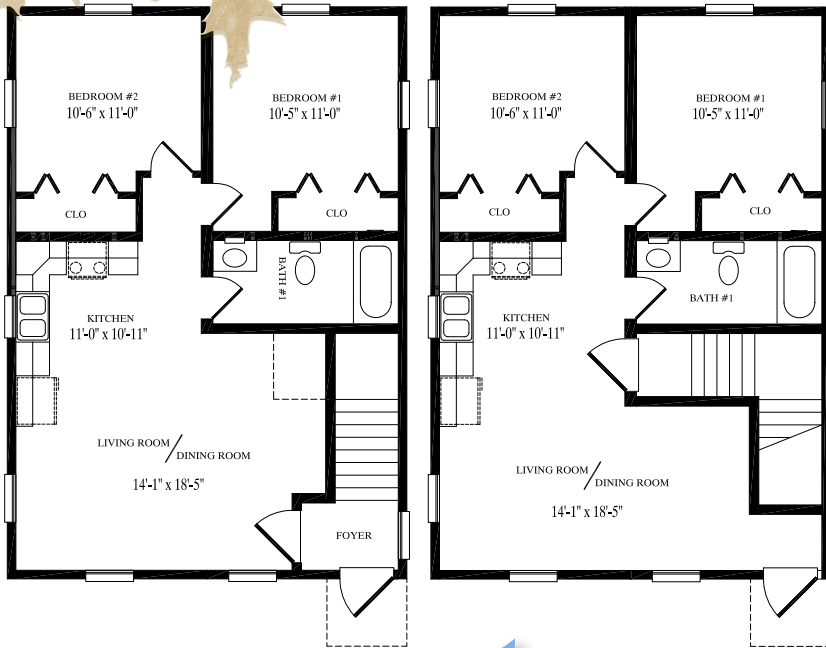
6,485 sq. ft. per floor

25,940 sq. ft. total

*Four-Story* CONDOMINIUM



# Two-Story DUPLEX



## Bloomfield

24' x 34'

Two-Story Duplex  
810 sq. ft. per unit  
1,620 sq. ft. total

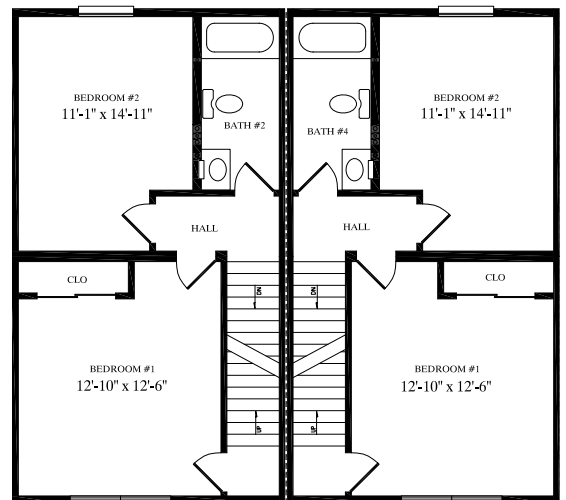
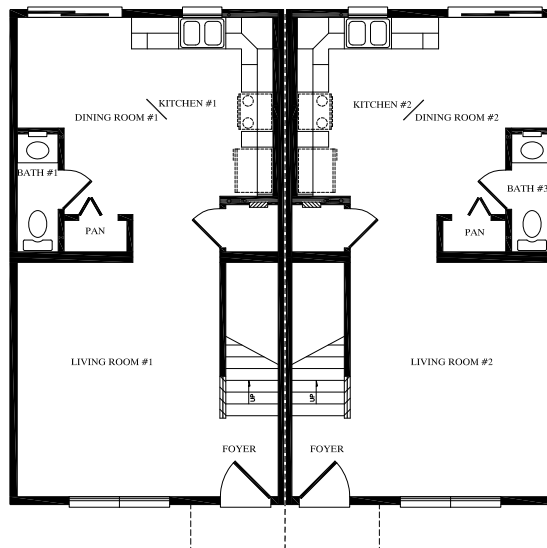


# Two-Story TOWNHOUSE

## Colebrook

18' x 32'

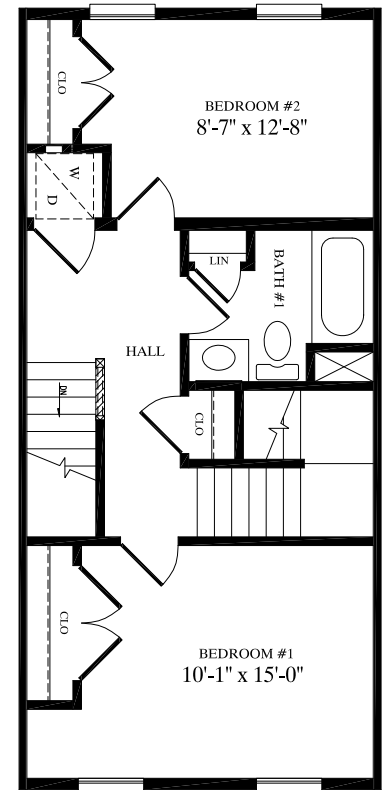
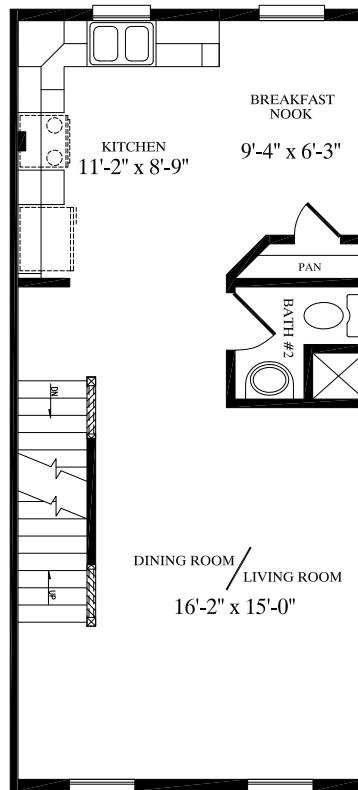
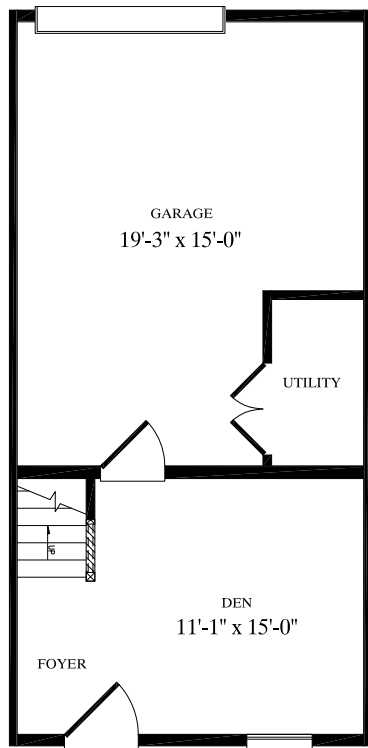
Two-Story Townhouse  
1,102 sq. ft. per unit  
4,410 sq. ft. total





## Aberdeen

16' x 34'  
Three-Story  
Townhouse  
1,576 sq. ft.



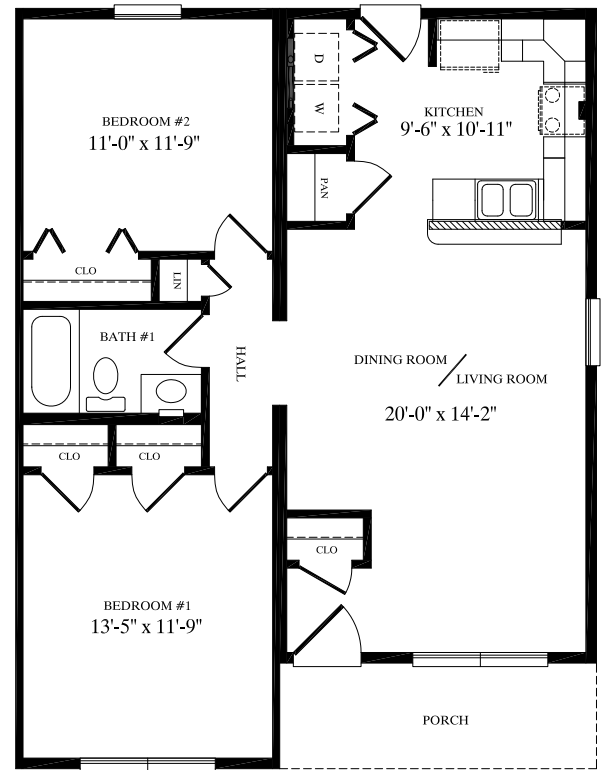
# Three-Story TOWNHOUSE





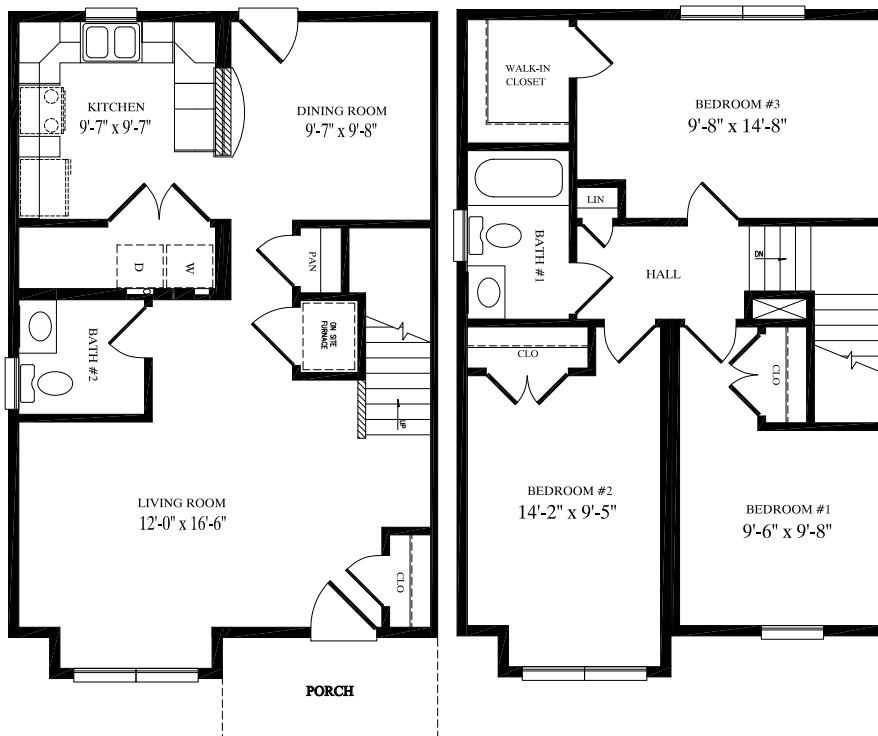
# Ranch DUPLEX

**Annandale**  
 27'5" x 36'  
 Ranch Duplex  
 915 sq. ft. per unit  
 1,830 sq. ft. total



## Bridgeport

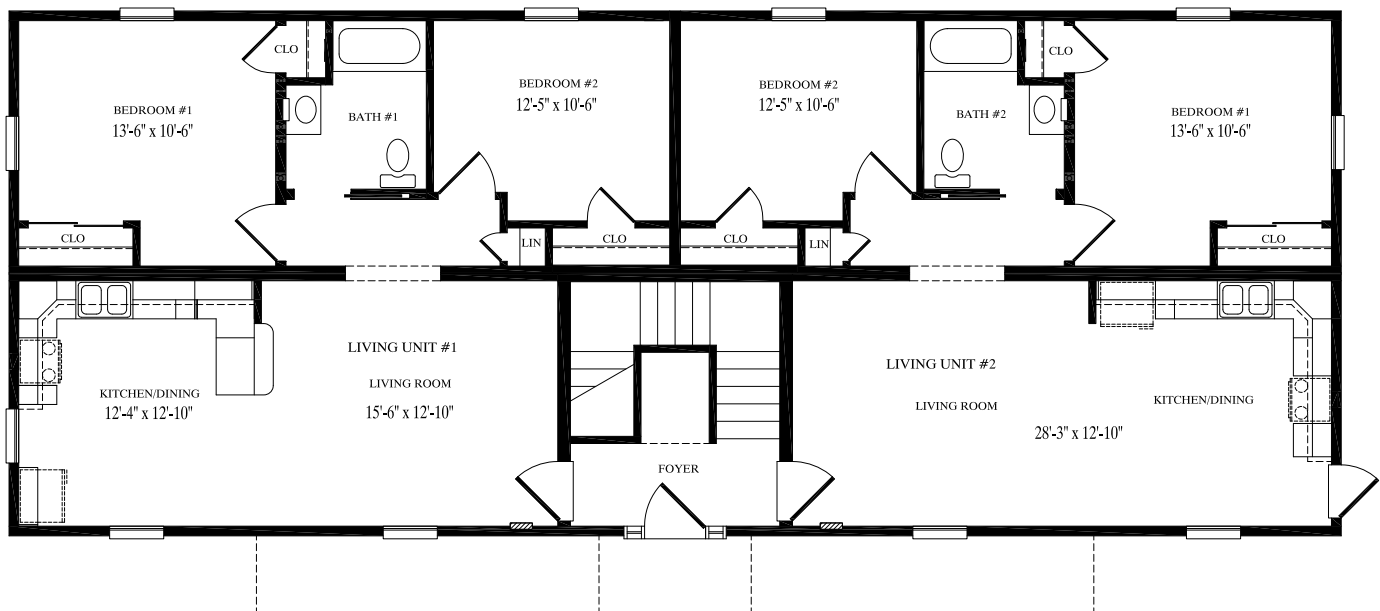
33' x 42'  
 Two-Story Duplex  
 1,308 sq. ft. per unit  
 2,616 sq. ft. total



# Two-Story DUPLEX







# Two-Story QUADPLEX

## Belmont

28' x 70'

Two-Story Quadplex

825 sq. ft. per unit

3,300 sq. ft. total

(All floors are identical)





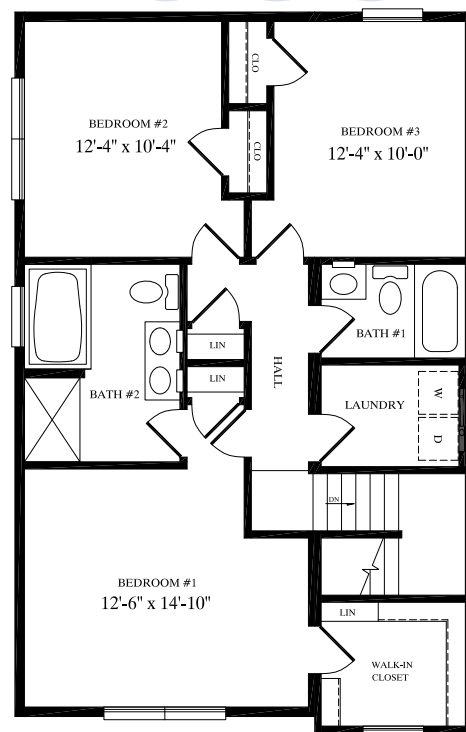
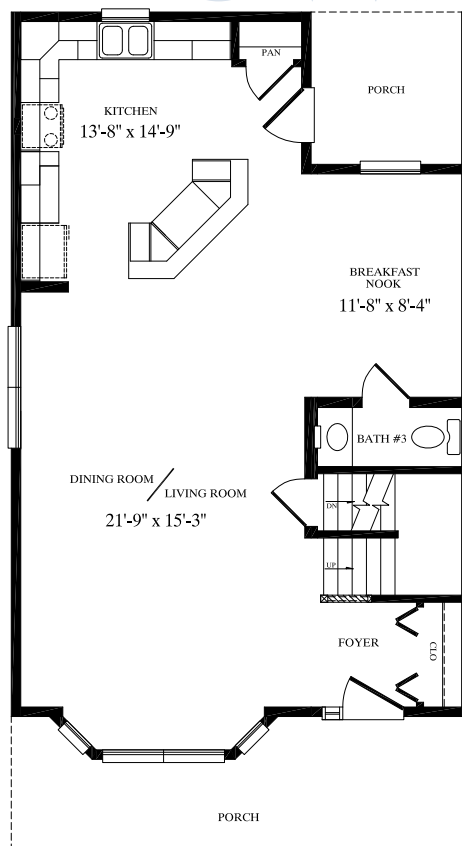
# Two-Story TOWNHOUSE



## Torrington

24' x 39'

Two-Story Townhouse  
1,743 sq. ft.



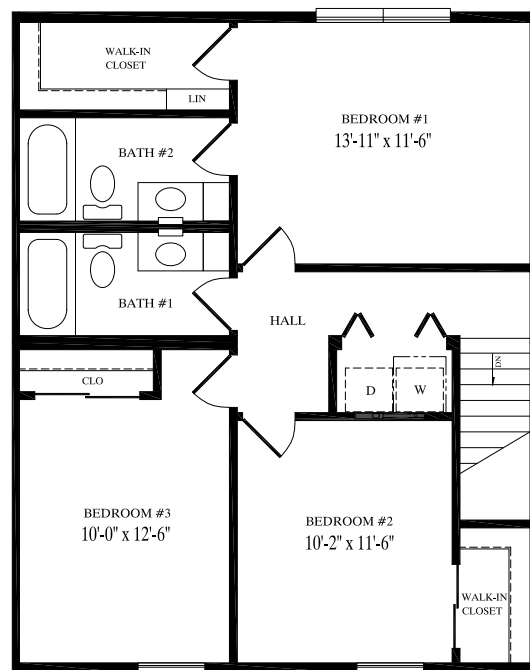
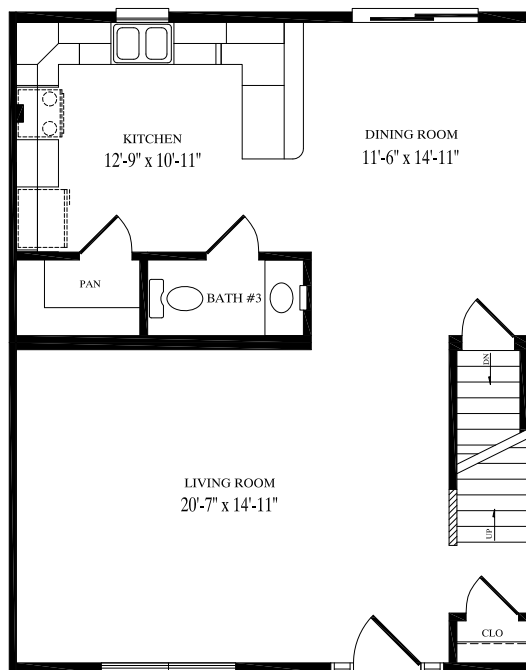
# Two-Story TOWNHOUSE



## Pennington

32' x 25'

Two-Story Townhouse  
1,576 sq. ft.







## Roslindale

24' x 39'

Two-Story Townhouse

1,827 sq. ft.

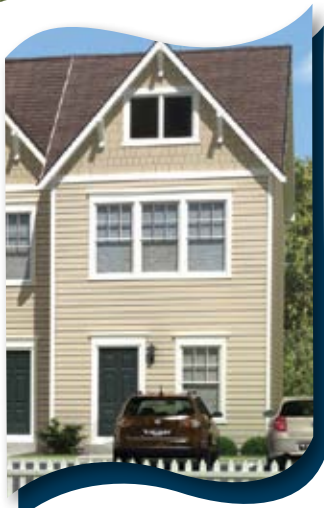


# Two-Story TOWNHOUSE



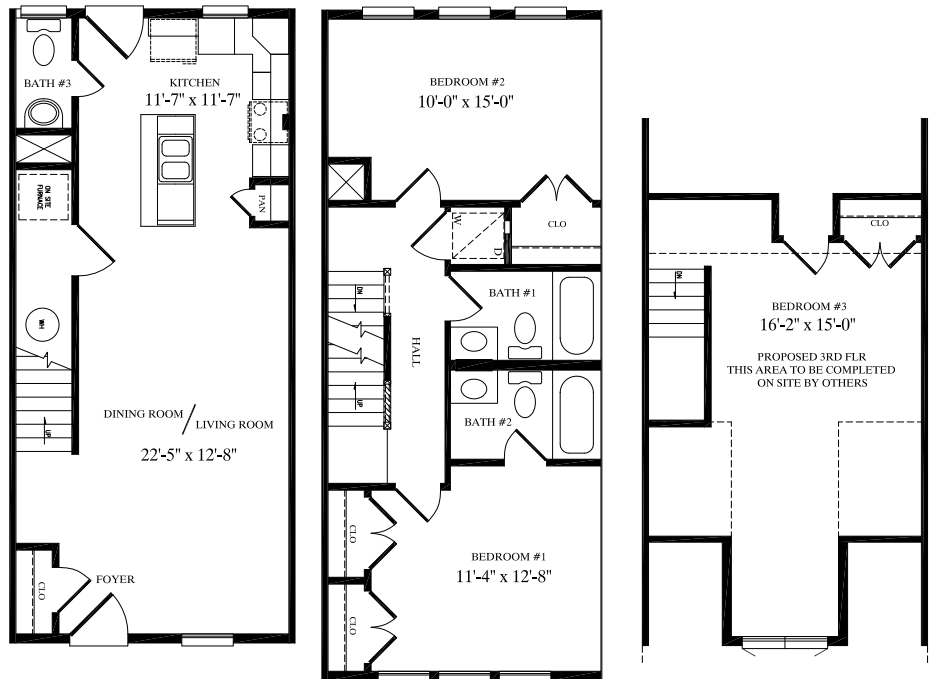


# Three-Story TOWNHOUSE



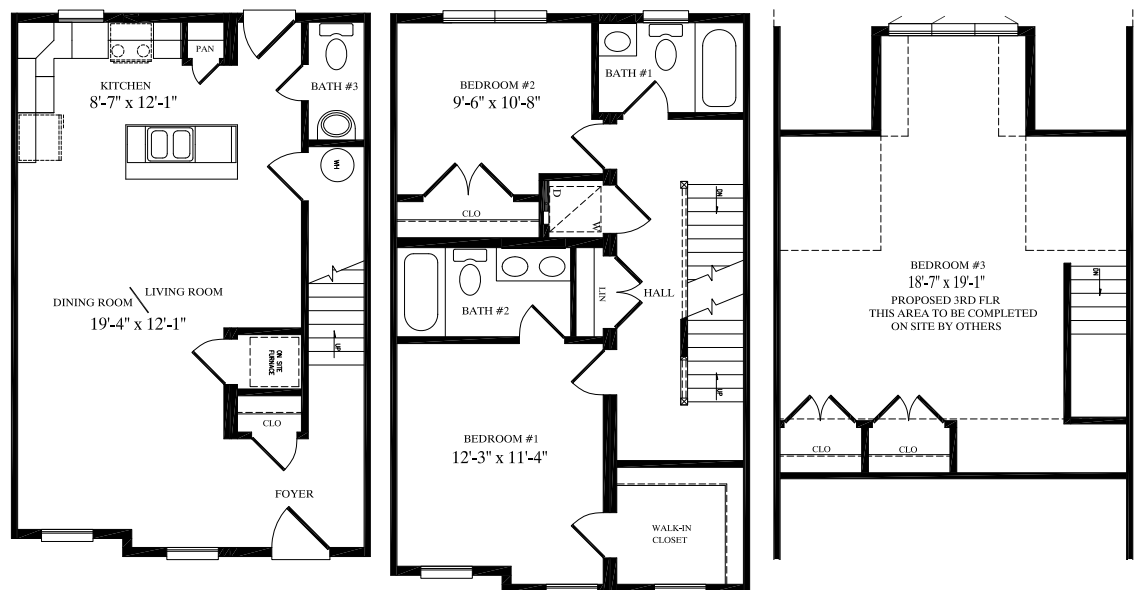
## Crisfield

16' x 35'  
Three-Story Townhouse  
1,120 sq. ft.

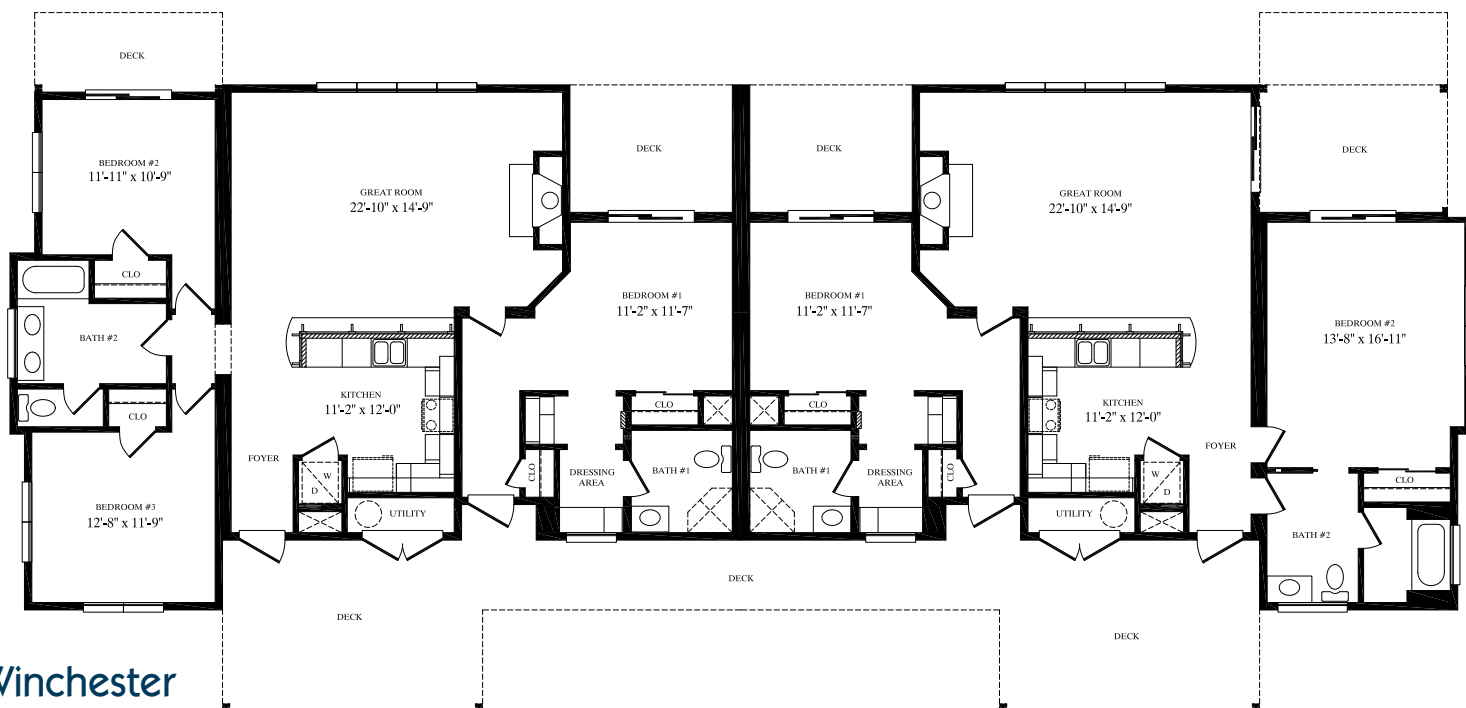


## Crownsville

20' x 30'  
Three-Story Townhouse  
1,218 sq. ft.







## Winchester

36' x 101'

Two-Story Condominium

1,402 sq. ft. right living units

1,507 sq. ft. left living units

2,909 sq. ft. per floor

5,818 sq. ft. total

(All floors are identical)

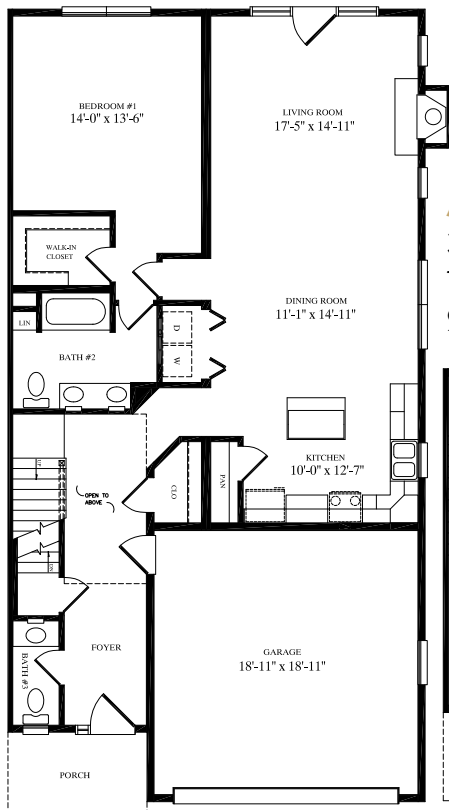
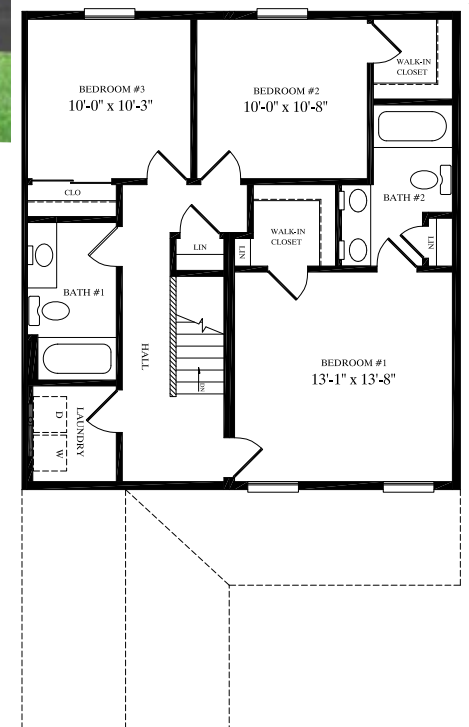
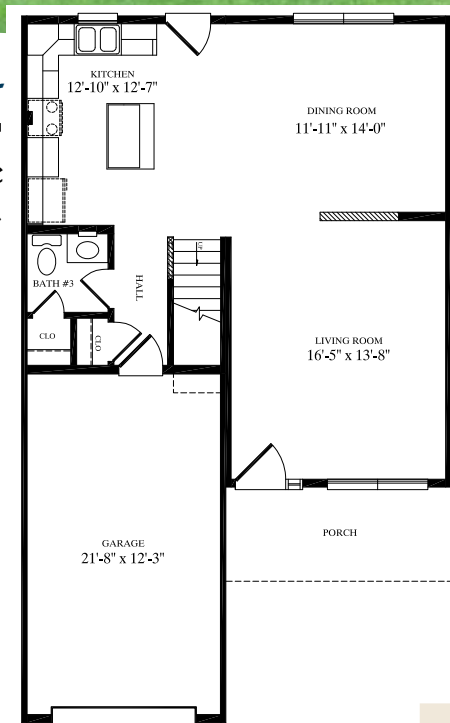
Two-Story CONDOMINIUM



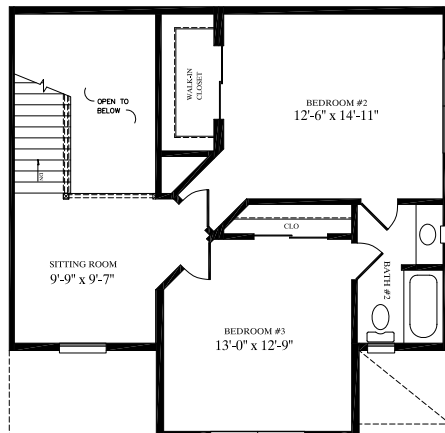


# Two-Story TOWNHOUSE

**Bridgewater**  
27'5" x 45'  
Two-Story Townhouse  
1,845 sq. ft.



**Aspen**  
30' x 57'  
Two-Story Duplex  
2,444 sq. ft.



# Two-Story DUPLEX





Three-Story

# DUPLEX

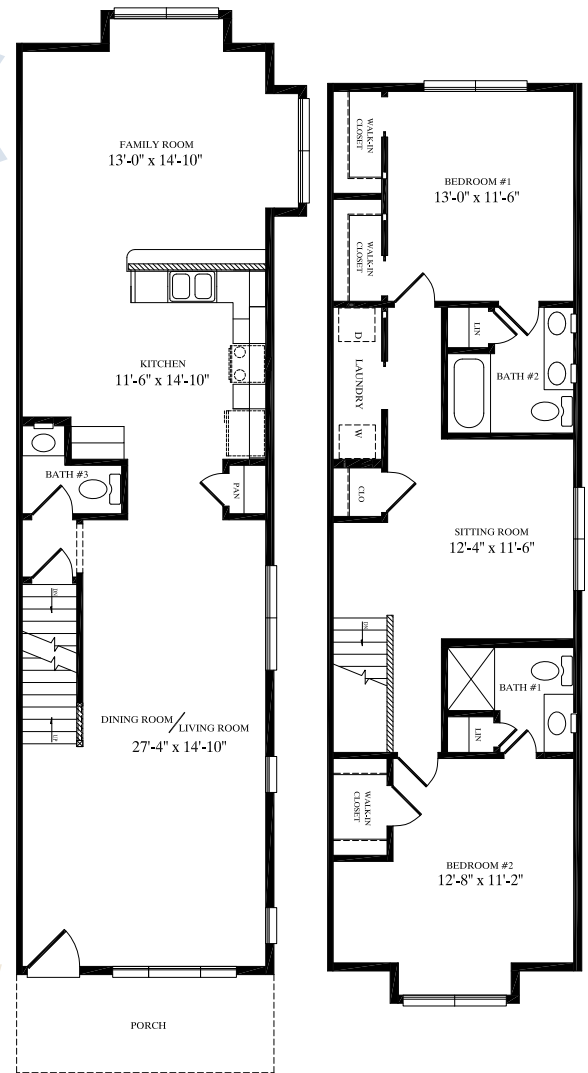


## Westport

16' x 59'

Three-Story Duplex

1,812 sq. ft.



Two-Story

# TOWNHOUSE



## Ridgeland

24'5" x 48'

Two-Story Townhouse

2,168 sq. ft.



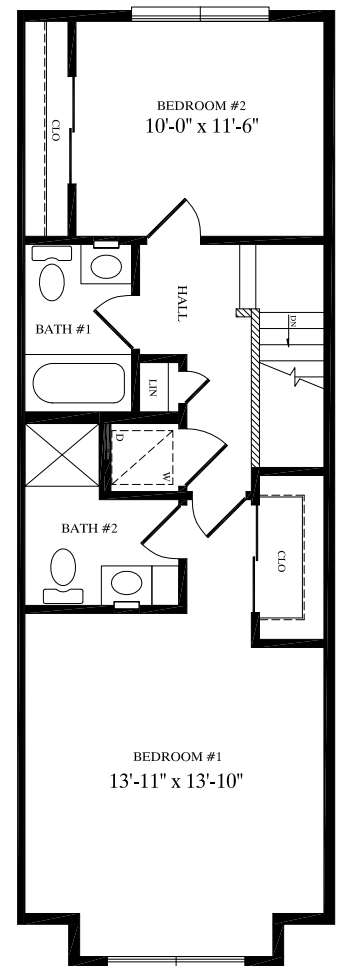
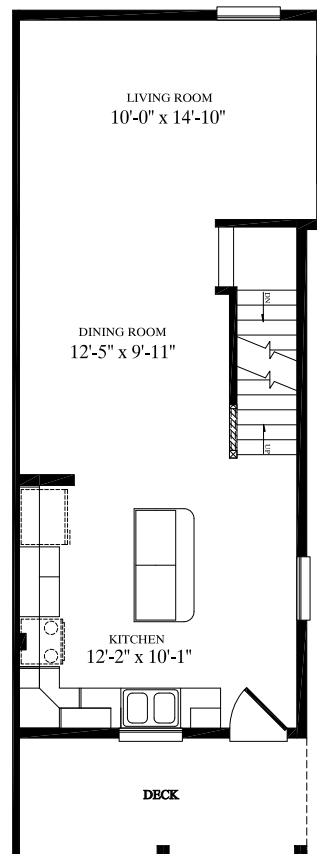
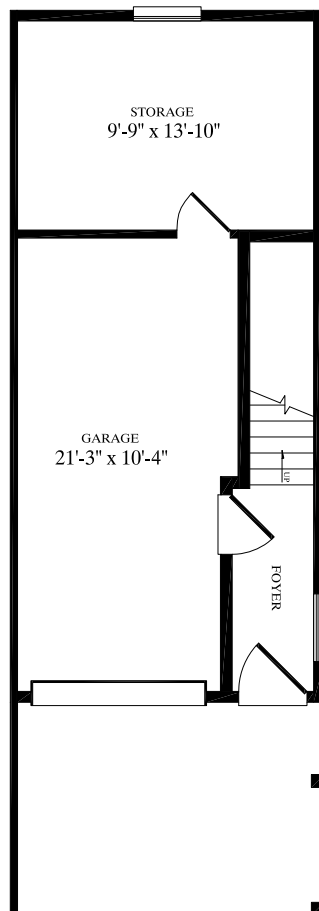
# Three-Story DUPLEX

## Mystic

16' x 45'

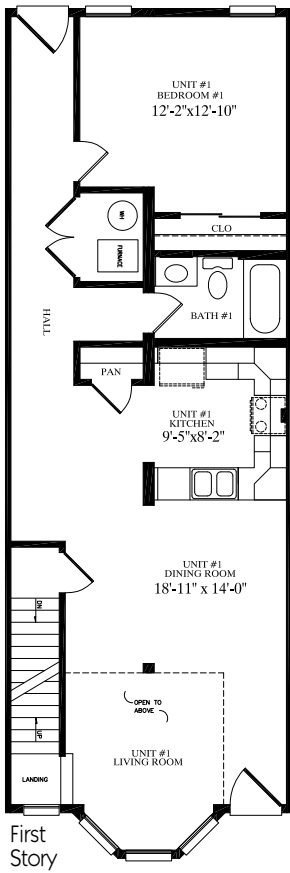
Three-Story Duplex

1,675 sq. ft.

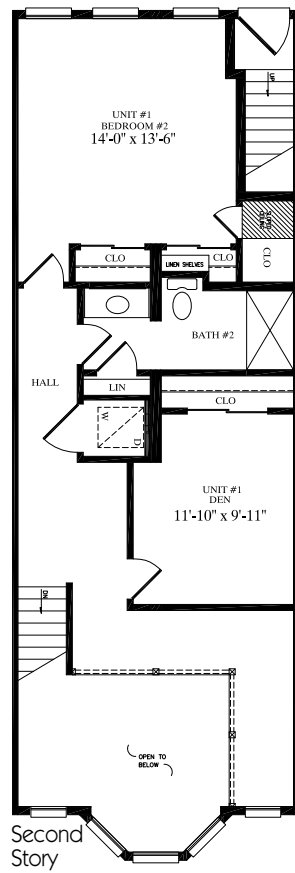




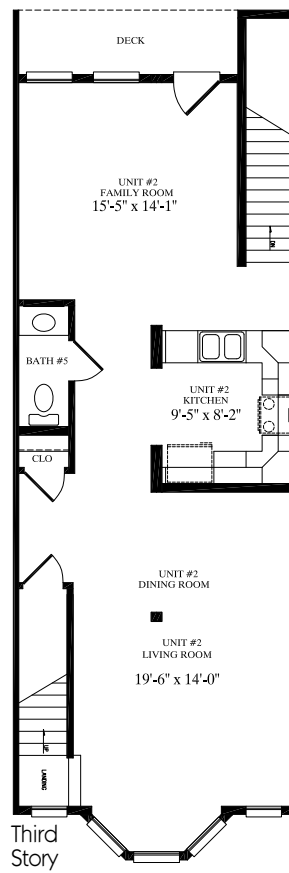
**LIVING UNIT #1**



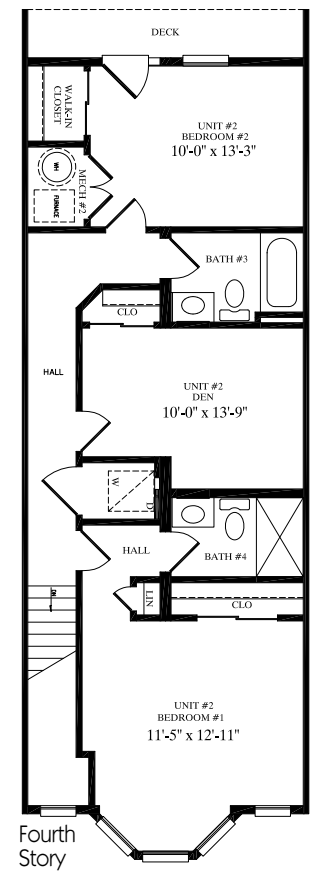
**Second Story**



**LIVING UNIT #2**



**Fourth Story**



## Creedmoor

18' x 50'  
Four-Story Duplex  
3,638 sq. ft.

# Four-Story DUPLEX





Two-Story

# TOWNHOUSE



## Canandaigua

48' x 48'

Cape  
Townhouse

1,767 sq. ft.

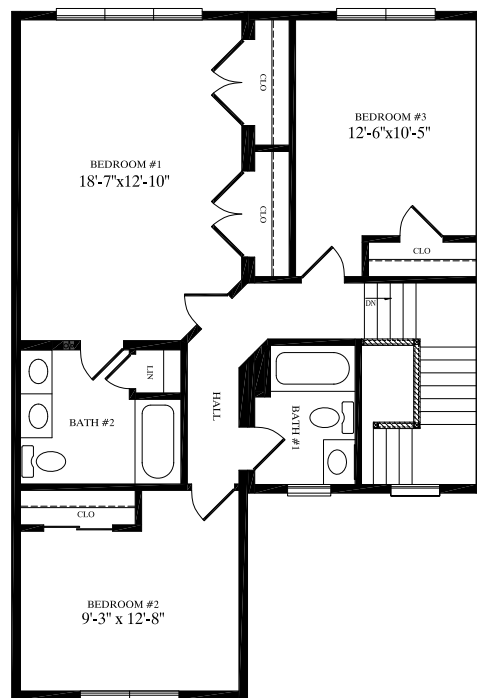
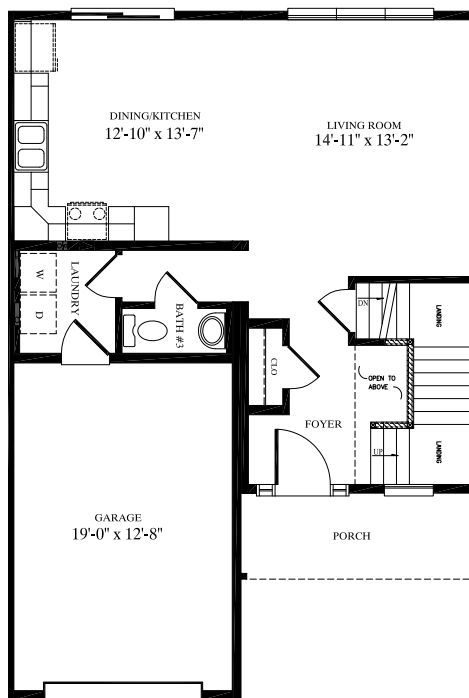


## Ontario

28' x 40'

Two-Story  
Townhouse

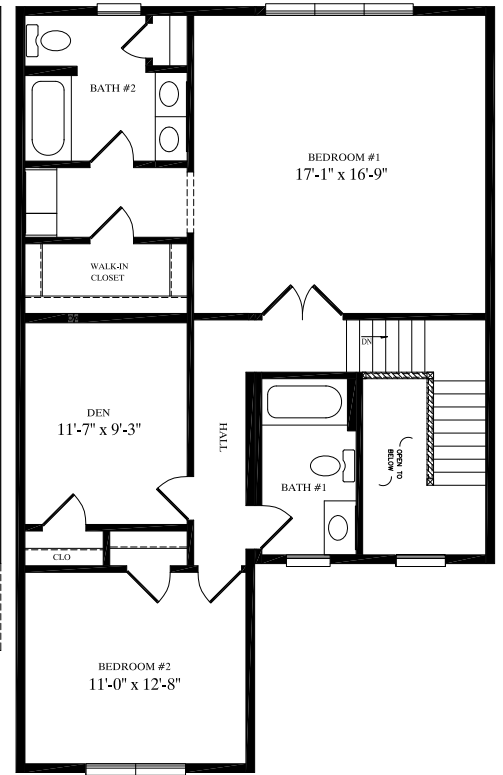
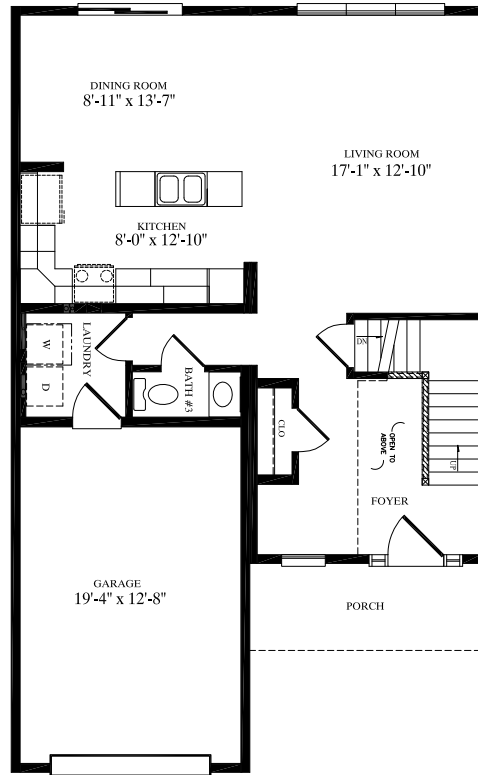
1,868 sq. ft.



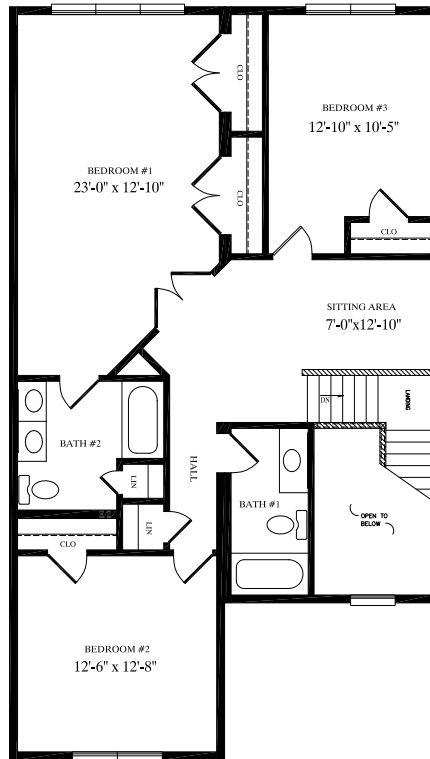
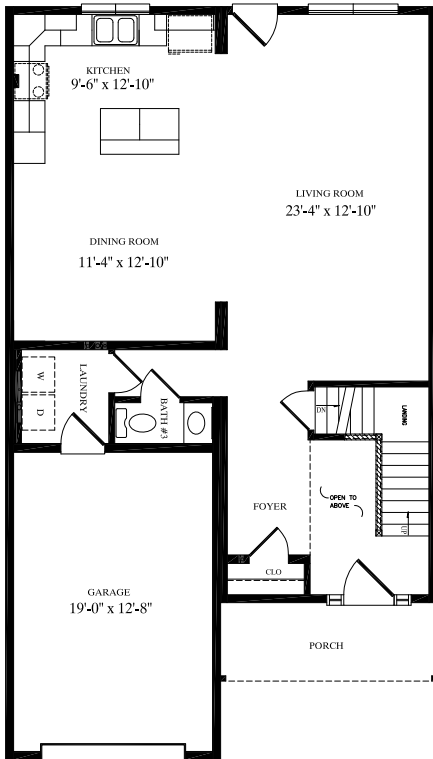




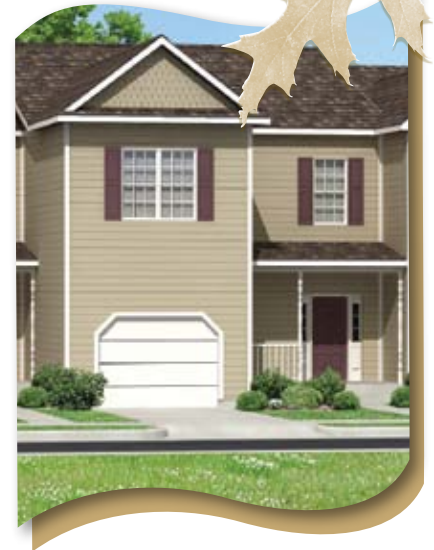
**Cayuga**  
28' x 44'  
Two-Story  
Townhouse  
2,088 sq. ft.



## Two-Story TOWNHOUSE



**Seneca**  
28' x 44'  
Two-Story  
Townhouse  
2,364 sq. ft.

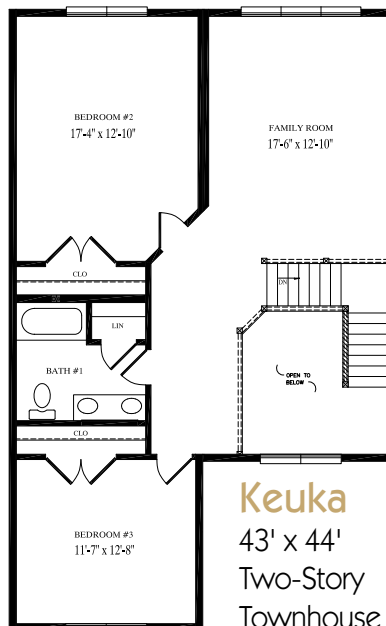
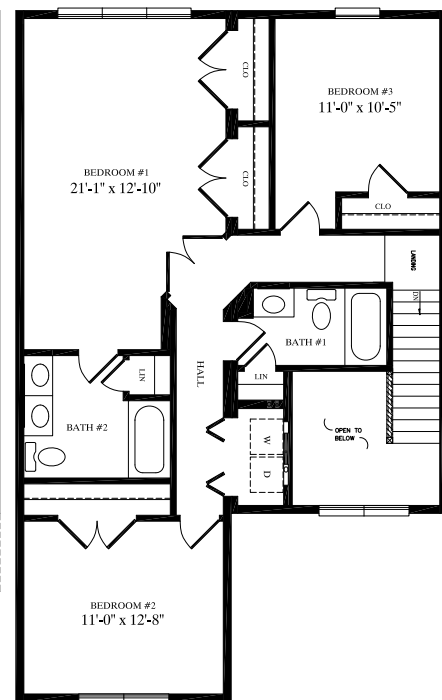
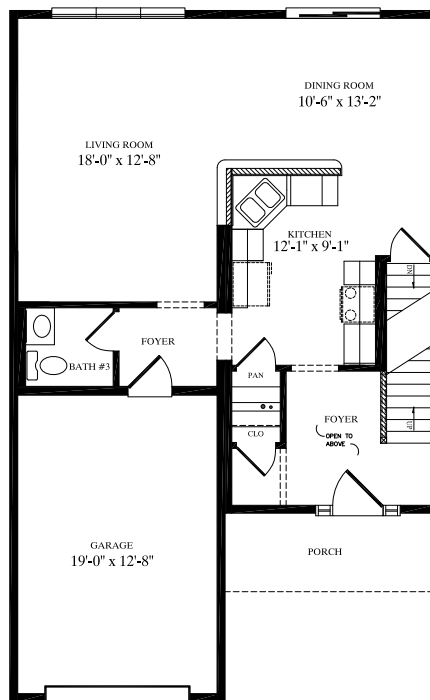




# Two-Story TOWNHOUSE



**Oneida**  
28' x 44'  
Two-Story  
Townhouse  
2,088 sq. ft.



**Keuka**  
43' x 44'  
Two-Story  
Townhouse  
2,584 sq. ft.

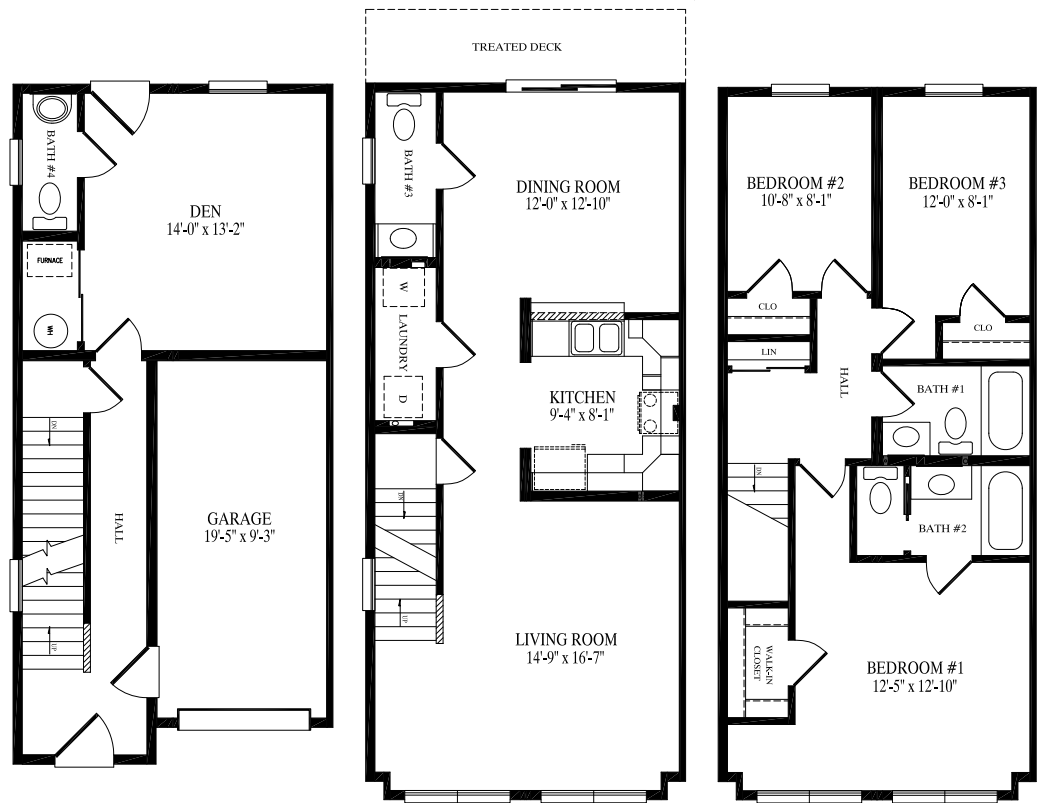




## Pine Meadow

18' x 37'

Three-Story Townhouse  
1,979 sq. ft.



Three-Story

TOWNHOUSE



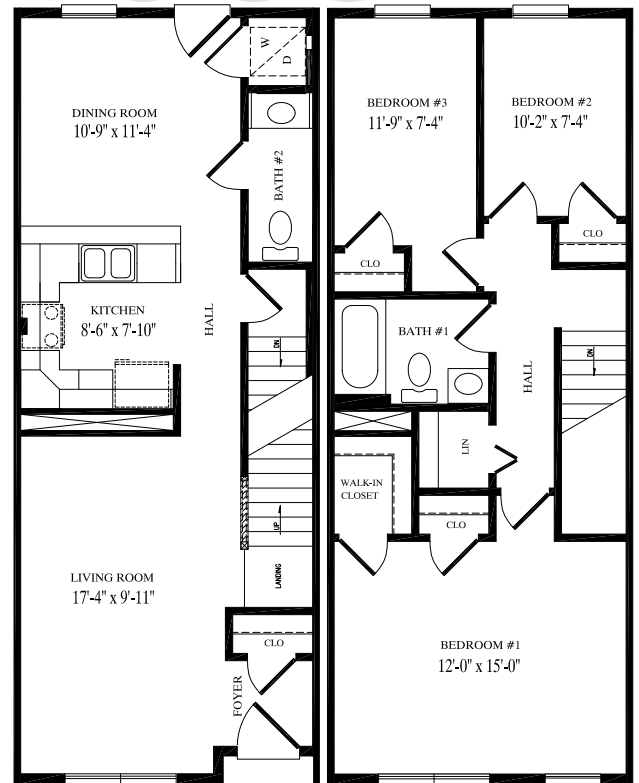
Two-Story

# TOWNHOUSE



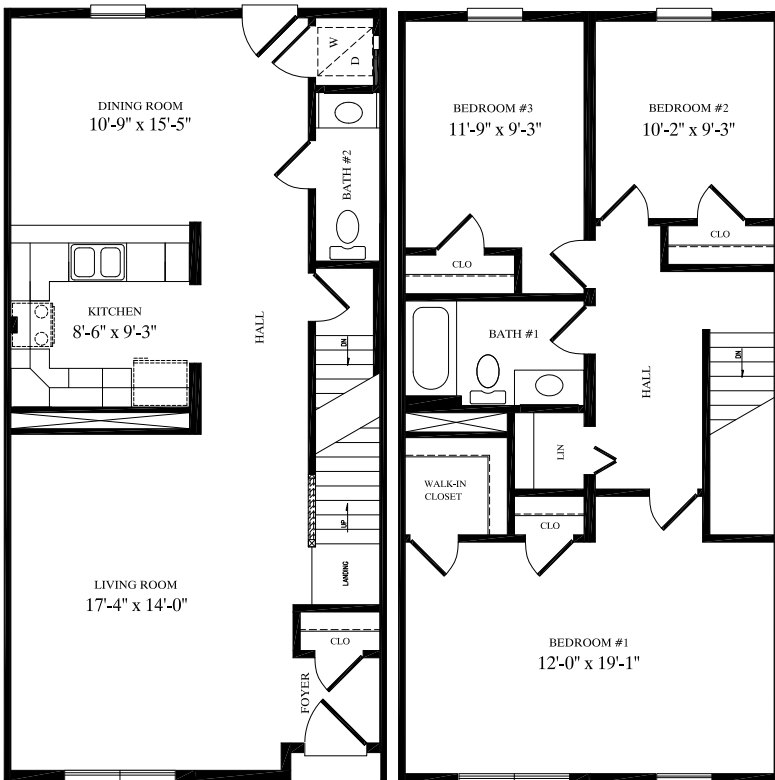
## Templeton

16' x 40'  
Two-Story  
Townhouse  
1,253 sq. ft.



Two-Story

# TOWNHOUSE



## Brookshire

20' x 40'  
Two-Story  
Townhouse  
1,578 sq. ft.

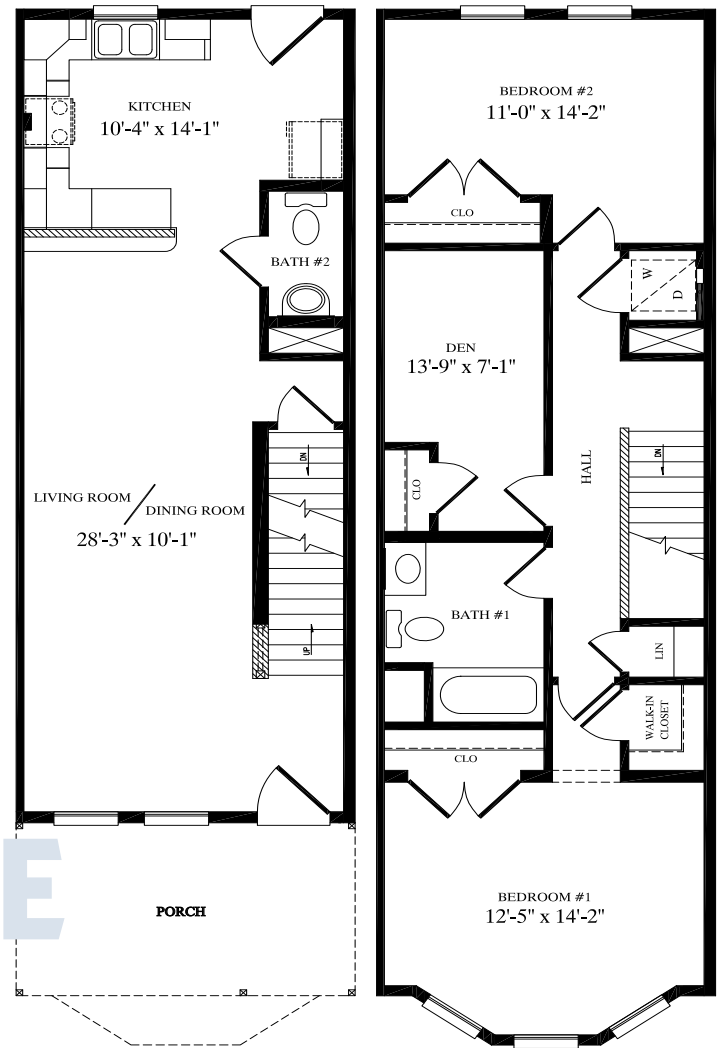






## Woodbridge

15' x 48'  
Two-Story  
Townhouse  
1,295 sq. ft.



Two-Story TOWNHOUSE



Great Homes Start With Quality Products...



Your PBS Builder/Developer

Builders/Developers are not agents of Professional Building Systems, Inc.



Professional Building Systems, Inc.  
72 East Market Street  
Middleburg, PA 17842  
Phone (570) 837-1424  
Toll Free (800) 837-4552  
[www.pbssystem.com](http://www.pbssystem.com)

NOTE: All renderings are artist's concepts only and may vary from actual home.