

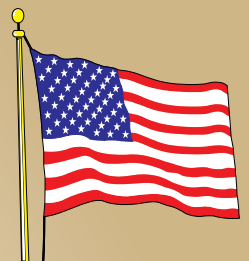


Building  
**AMERICA'S**  
Future... Today!



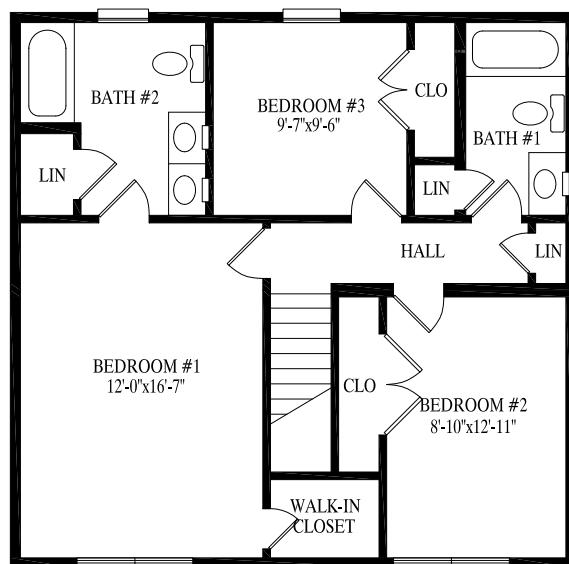
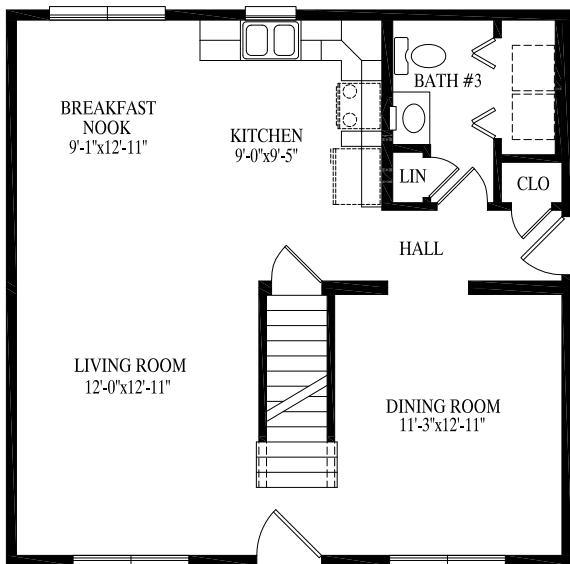
**P**ROFESSIONAL  
**B**UILDING  
**S**YSTEMS, INC.

Two-Story



Made in USA

# BELMONTE

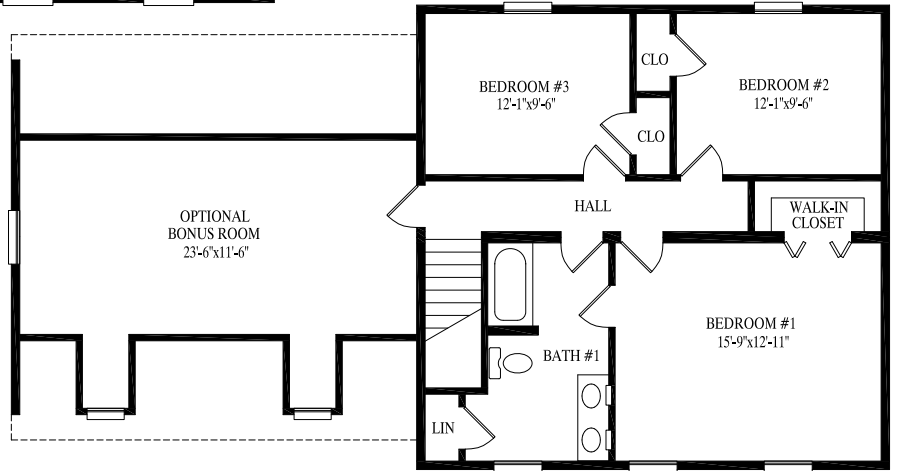
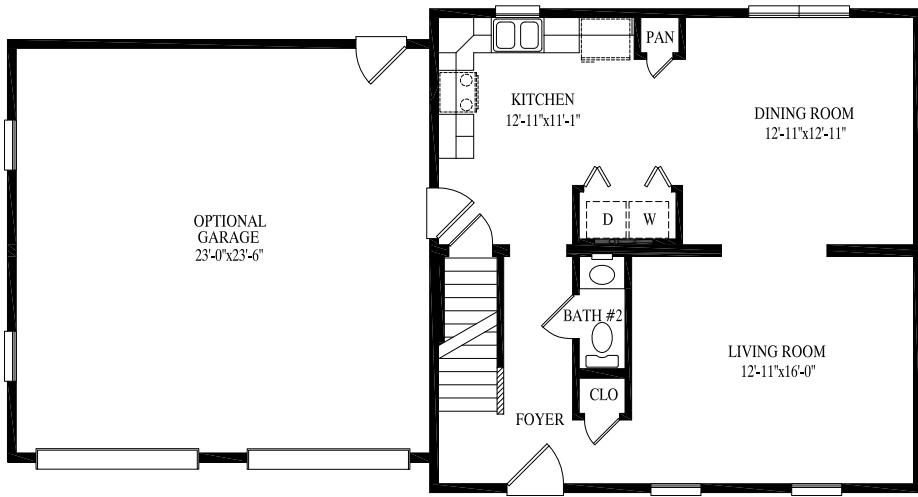


## Belmonte

27' 6" x 28'  
770 sq. ft. 1st floor

27' 6" x 28'  
770 sq. ft. 2nd floor

1540 total sq. ft.



## Waterford

27' 6" x 28'  
 770 sq. ft. 1st floor  
 27' 6" x 28'  
 770 sq. ft. 2nd floor  
 1540 total sq. ft.



WATERFORD

# KLONDIKE

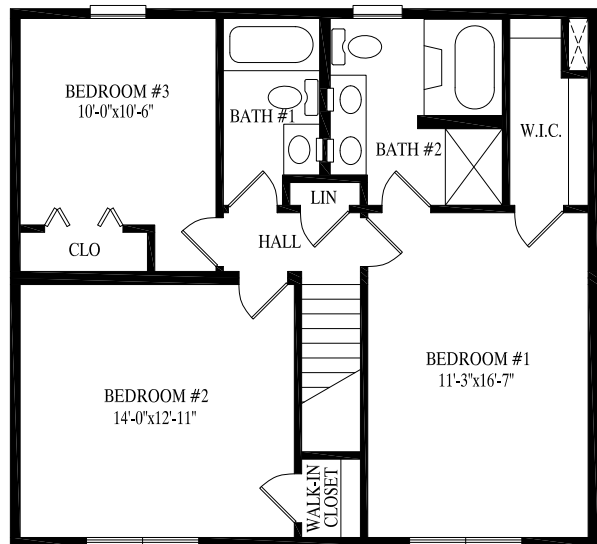
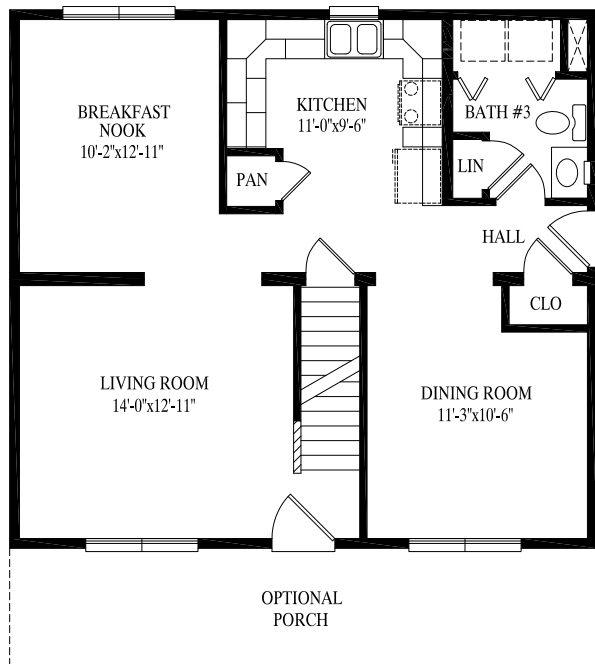


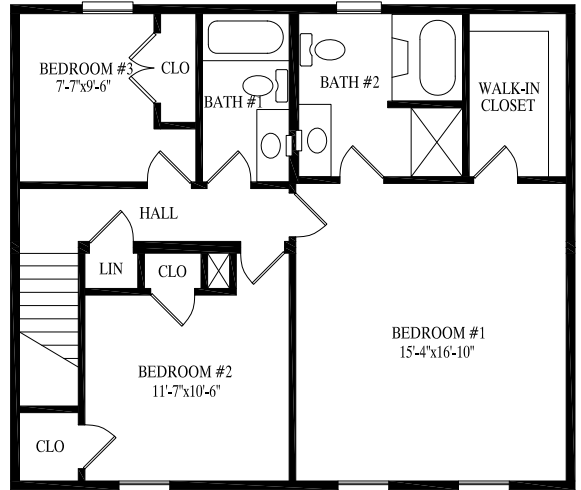
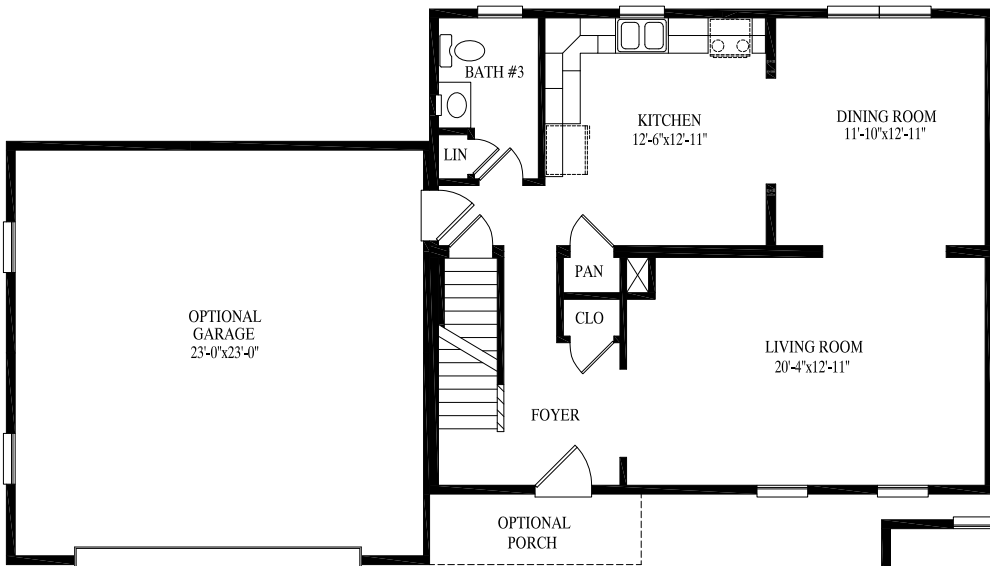
## Klondike

27' 6" x 30'  
825 sq. ft. 1st floor

27' 6" x 30'  
825 sq. ft. 2nd floor

1650 total sq. ft.





## Washington

27' 6" x 32'  
880 sq. ft. 1st floor

27' 6" x 32'  
880 sq. ft. 2nd floor

1760 total sq. ft.



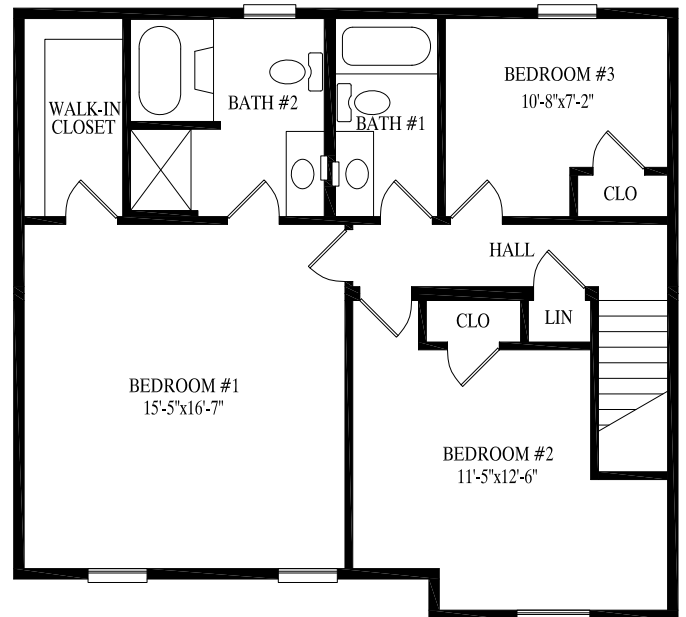
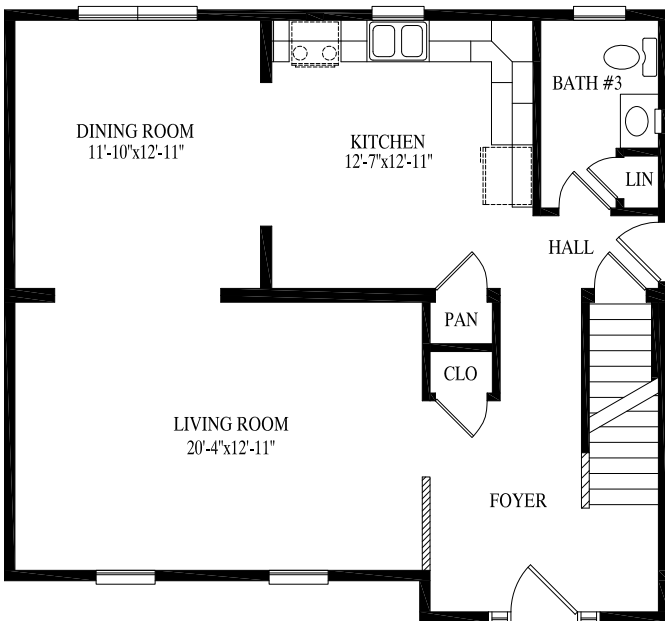
# WASHINGTON

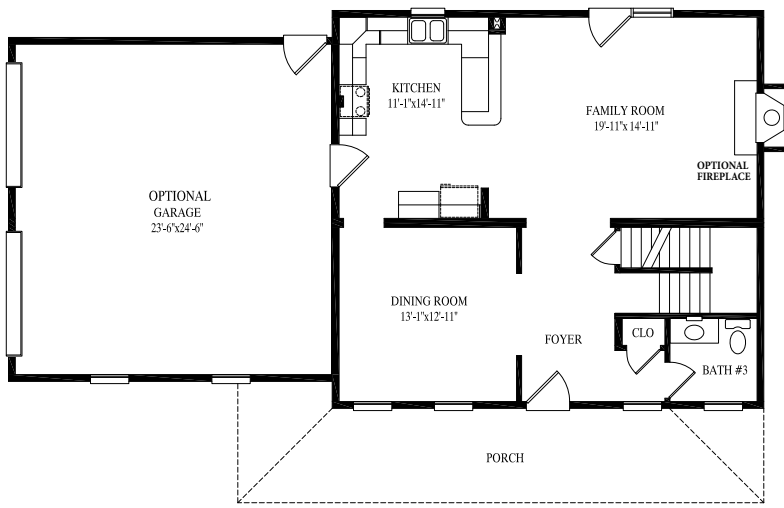
# KINGSLEY



## Kingsley

29' 6" x 32'  
 904 sq. ft. 1st floor  
 29' 6" x 32'  
 904 sq. ft. 2nd floor  
 1808 total sq. ft.



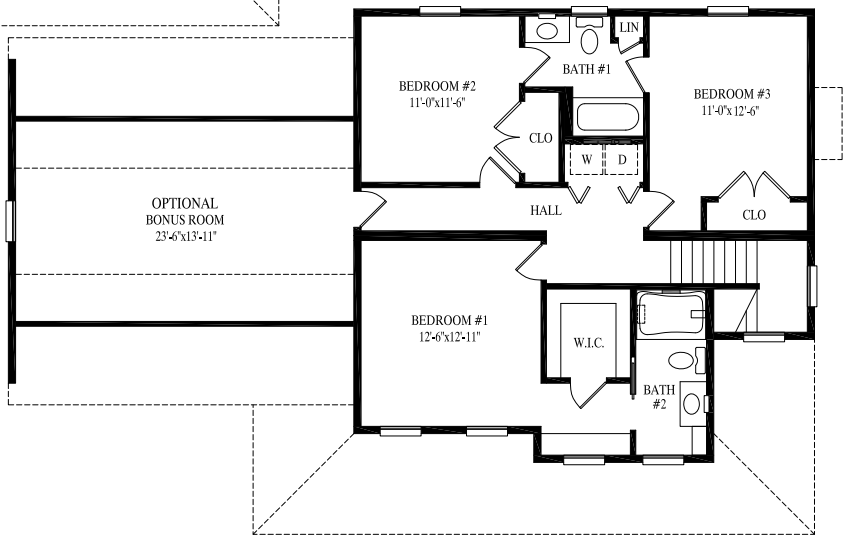


## Holbrook

29' 6" x 32'  
944 sq. ft. 1st floor

31' 6" x 32'  
923 sq. ft. 2nd floor

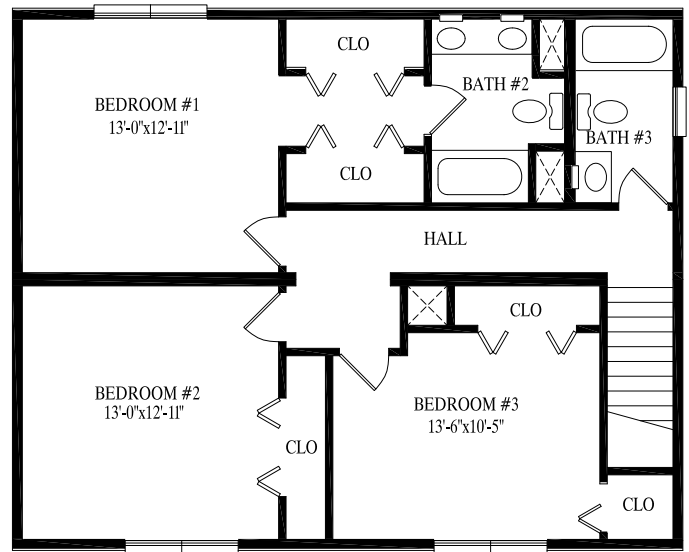
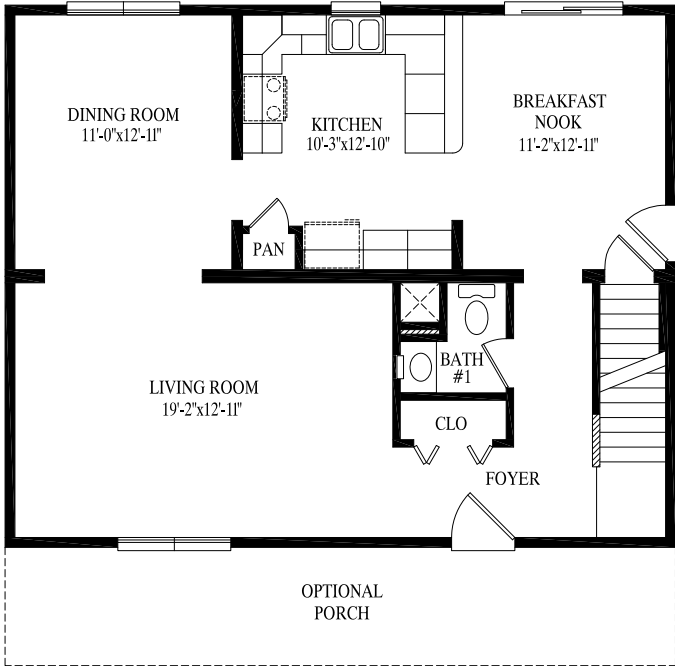
1867 total sq. ft.



# HOLBROOK







### Chesapeake

27' 6" x 34'  
935 sq. ft. 1st floor

27' 6" x 34'  
935 sq. ft. 2nd floor

1870 total sq. ft.



# CHESAPEAKE

# SAGAMORE

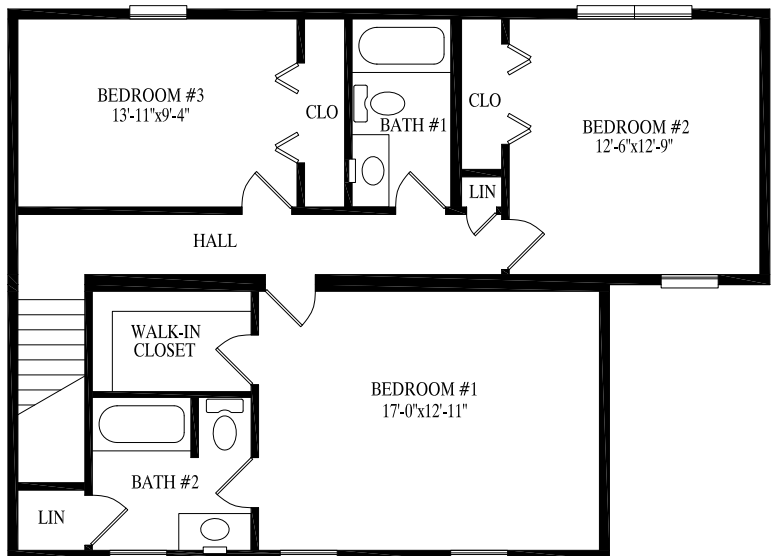
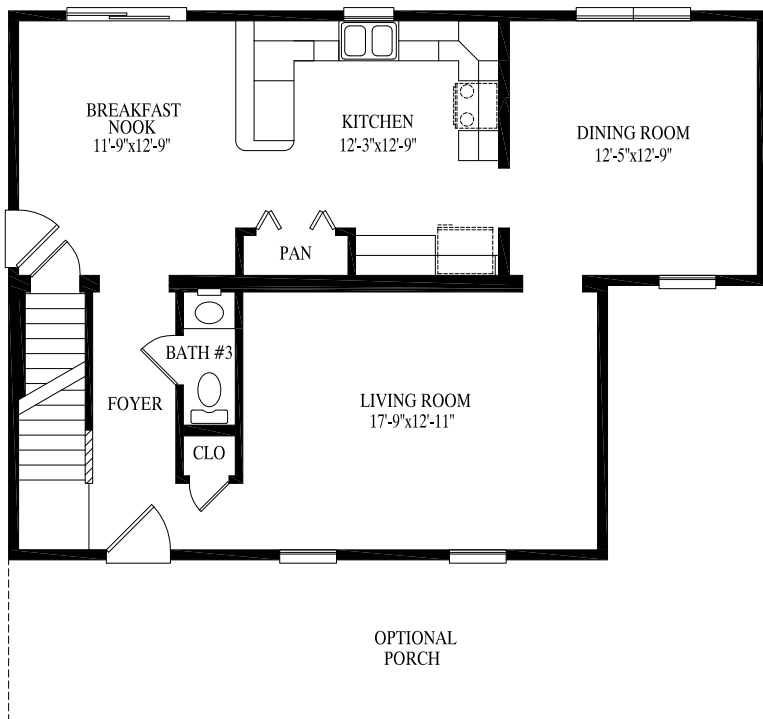


## Sagamore

27' 6" x 30' / 38'  
935 sq. ft. 1st floor

27' 6" x 30' / 38'  
935 sq. ft. 2nd floor

1870 total sq. ft.





## McKenna

27' 6" x 32' / 40'  
 978 sq. ft. 1st floor

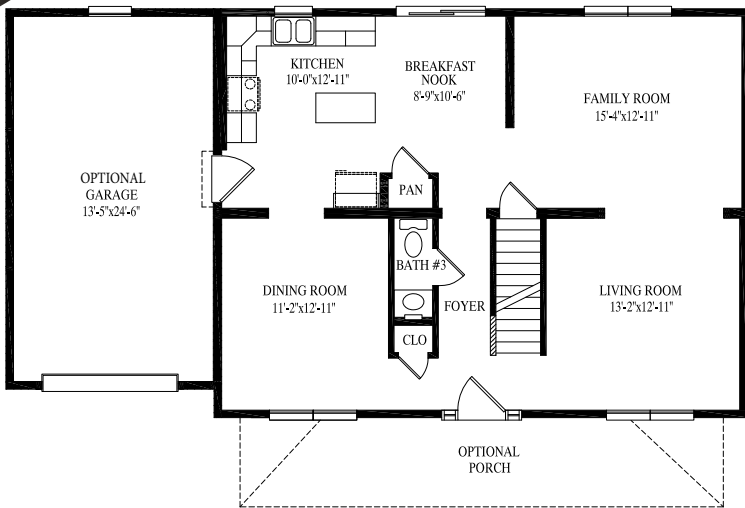
27' 6" x 32' / 40'  
 978 sq. ft. 2nd floor

1956 total sq. ft.



McKENNA

# BROOKVILLE



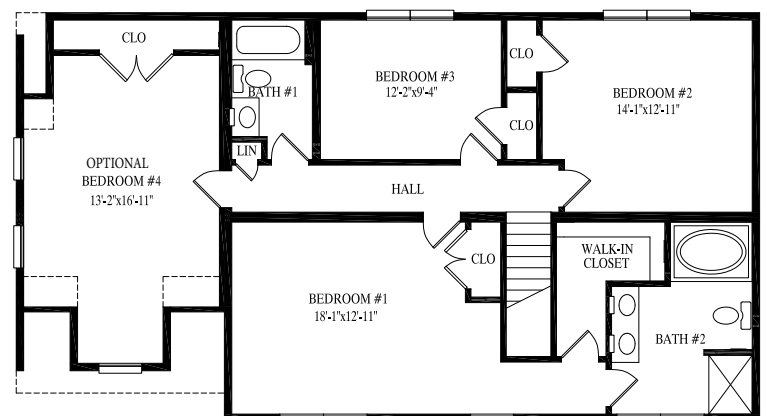
## Brookville

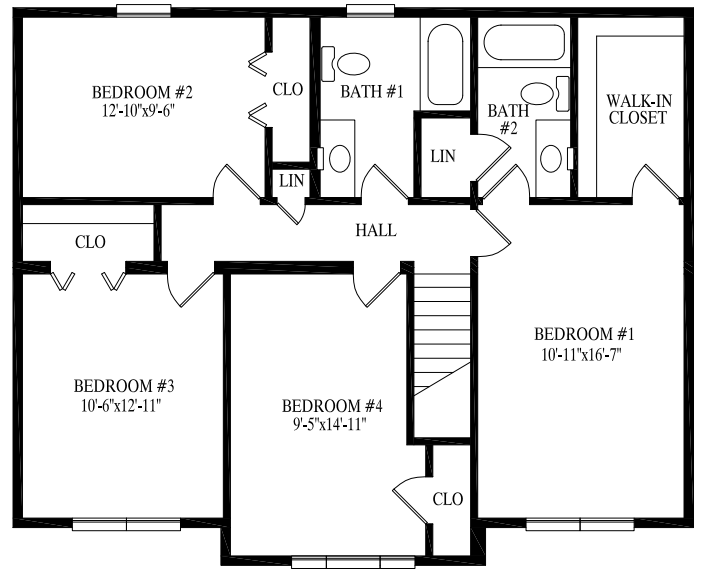
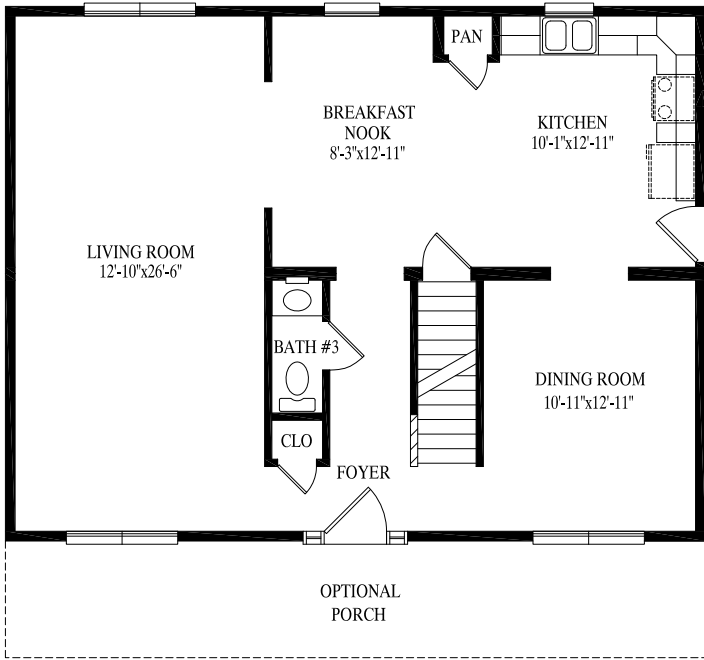
27' 6" x 36'  
990 sq. ft. 1st floor

27' 6" x 36'  
990 sq. ft. 2nd floor

1980 total sq. ft.

2280 total sq. ft.  
with optional garage  
and 4th bedroom





### Morris

27' 6" x 36'  
990 sq. ft. 1st floor

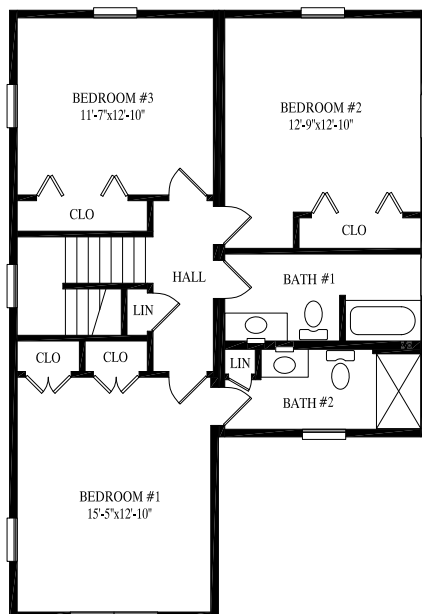
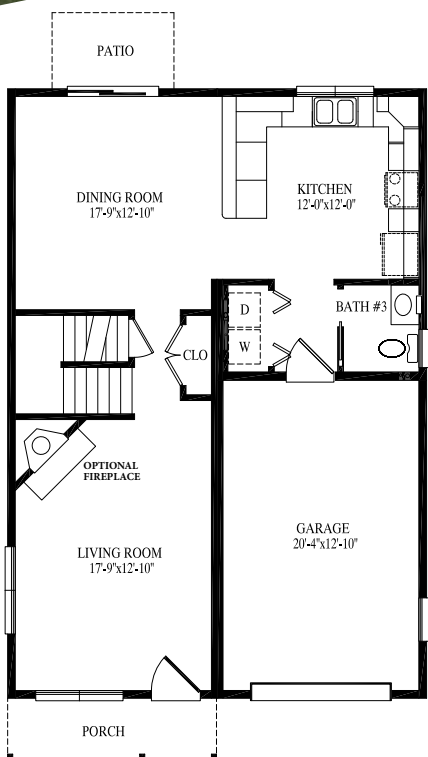
29' 6" x 36'  
1018 sq. ft. 2nd floor

2008 total sq. ft.



MORRIS

# BRIGHTON

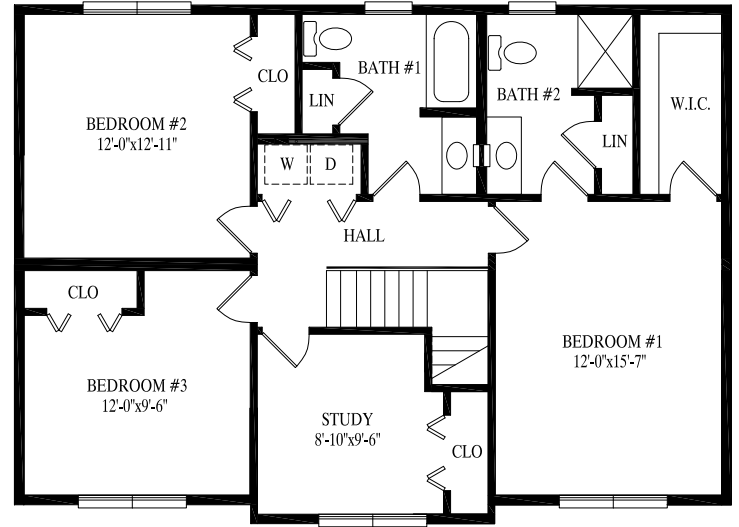
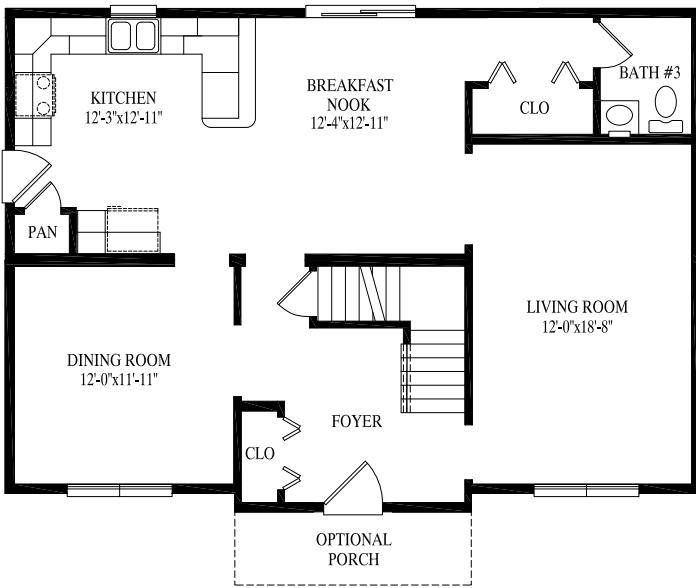


## Brighton

27' 6" x 40'  
1100 sq. ft. 1st floor

27' 6" x 40'  
936 sq. ft. 2nd floor

2036 total sq. ft.



## Saratoga

27' 6" x 38'  
1020 sq. ft. 1st floor

27' 6" x 38'  
1020 sq. ft. 2nd floor

2040 total sq. ft.



# SARATOGA

# DELAWARE

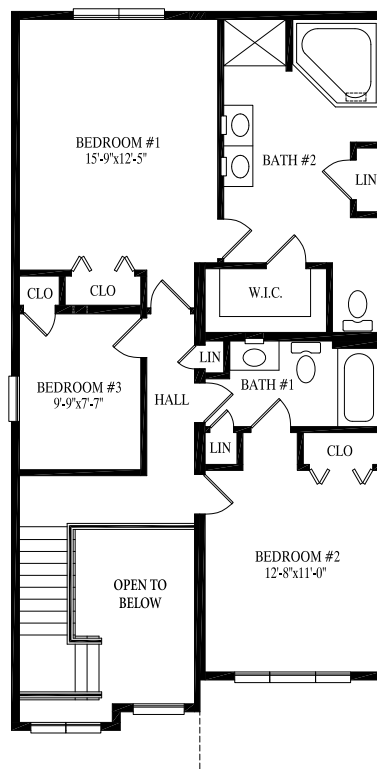
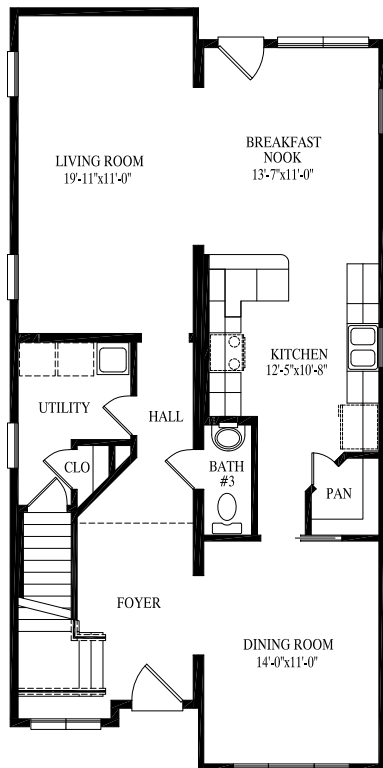


## Delaware

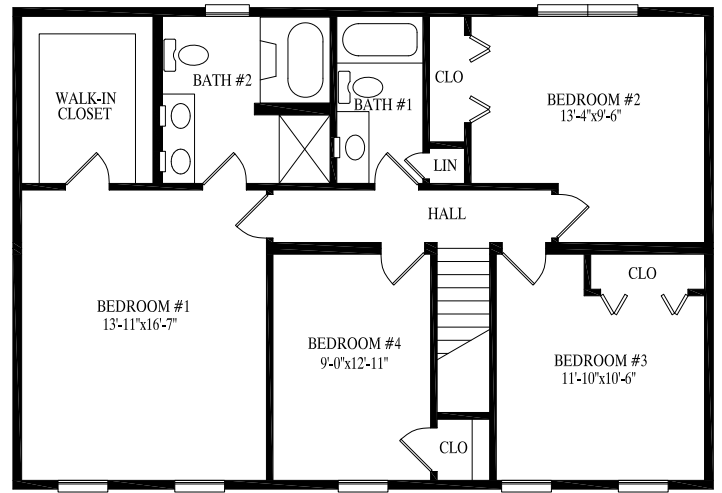
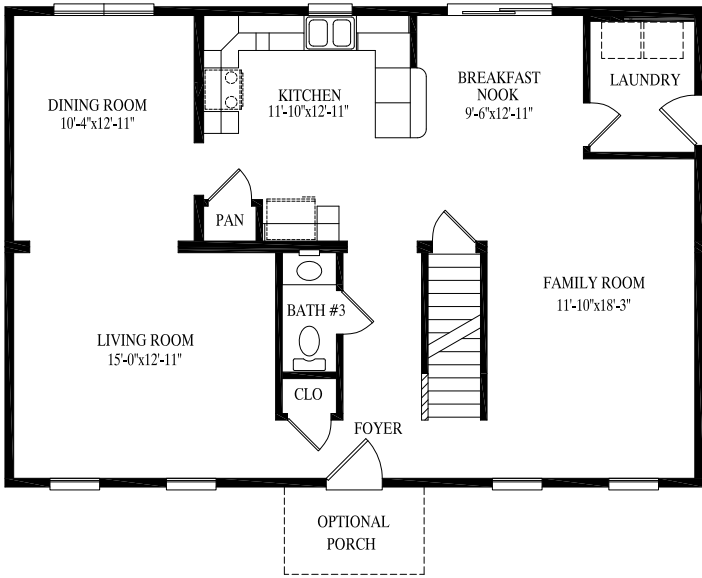
23' 8" x 45' 2"  
1073 sq. ft. 1st floor

23' 8" x 43' 3"  
1026 sq. ft. 2nd floor

2099 total sq. ft.







### Billingsley

27' 6" x 40'  
1100 sq. ft. 1st floor

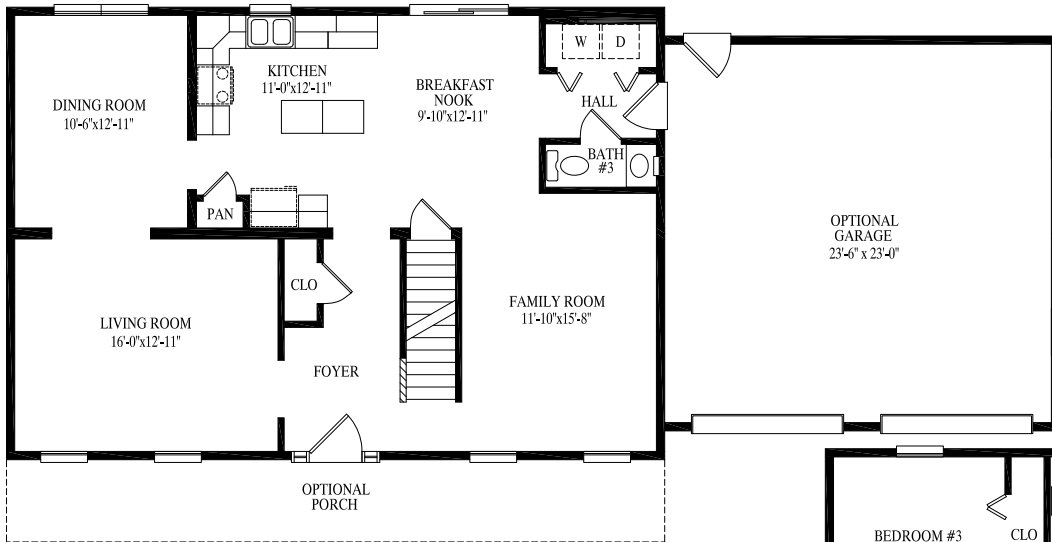
27' 6" x 40'  
1100 sq. ft. 2nd floor

2200 total sq. ft.



# BILLINGSLEY

# HAYLEY

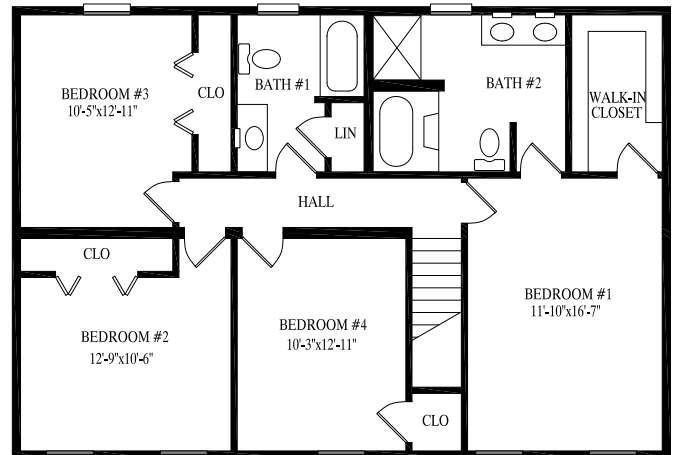


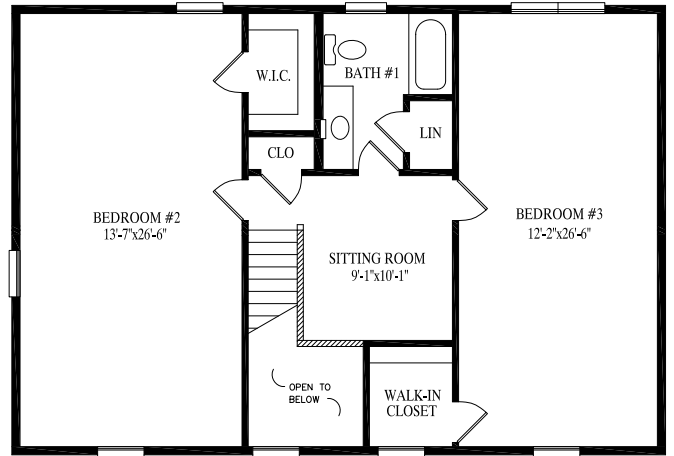
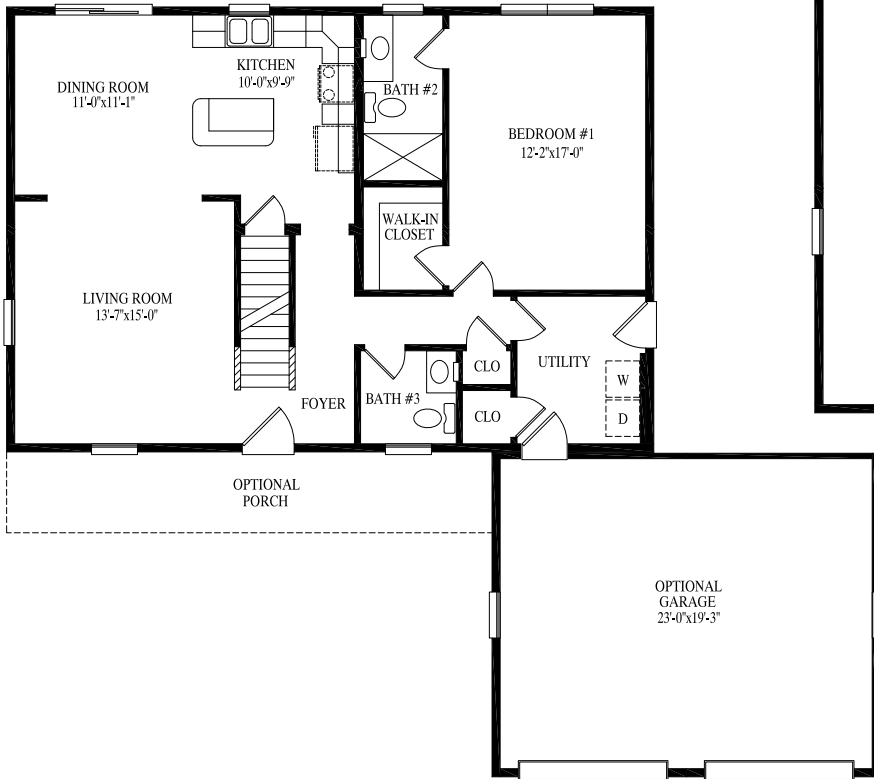
## Hayley

27' 6" x 40'  
1100 sq. ft. 1st floor

27' 6" x 40'  
1100 sq. ft. 2nd floor

2200 total sq. ft.





## Sonoma

27' 6" x 40'  
 1100 sq. ft. 1st floor  
 27' 6" x 40'  
 1100 sq. ft. 2nd floor  
 2200 total sq. ft.



# SONOMA

# HELENA

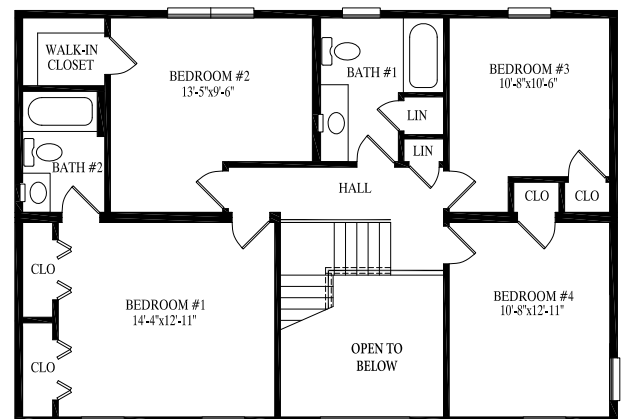
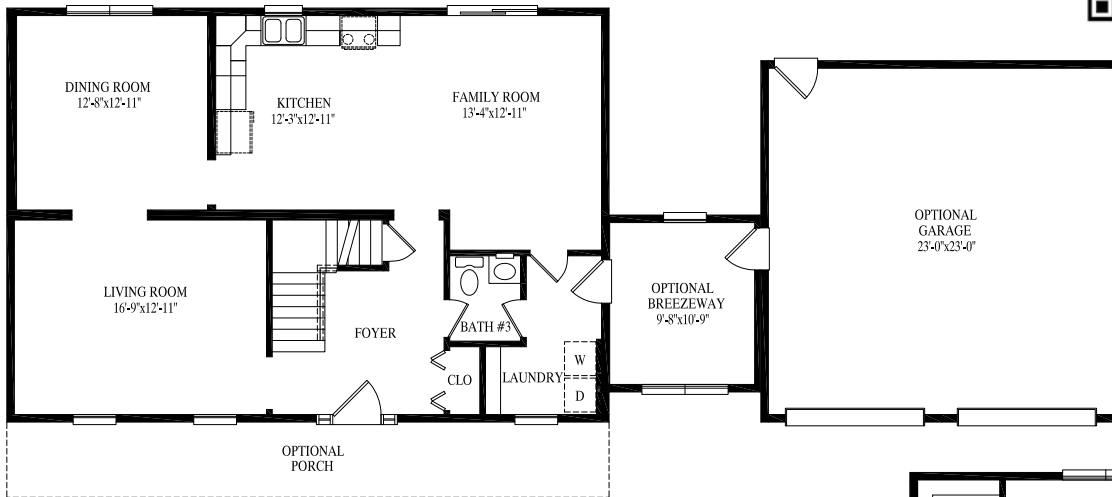


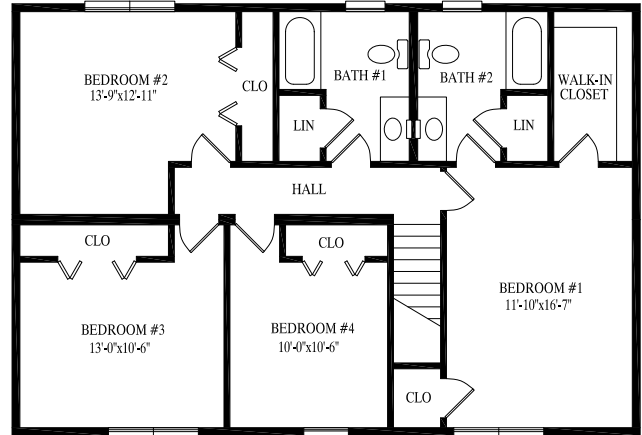
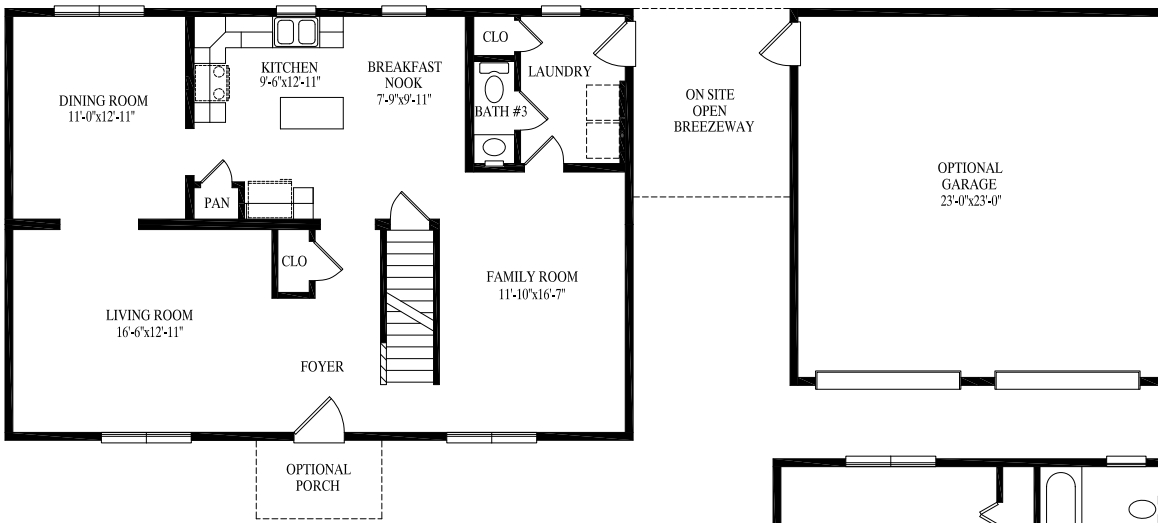
## Helena

27' 6" x 40'  
1100 sq. ft. 1st floor

27' 6" x 40'  
1100 sq. ft. 2nd floor

2200 total sq. ft.





## Tuscany

27' 6" x 40'  
1100 sq. ft. 1st floor

27' 6" x 40'  
1100 sq. ft. 2nd floor

2200 total sq. ft.



# TUSCANY

# NIAGARA

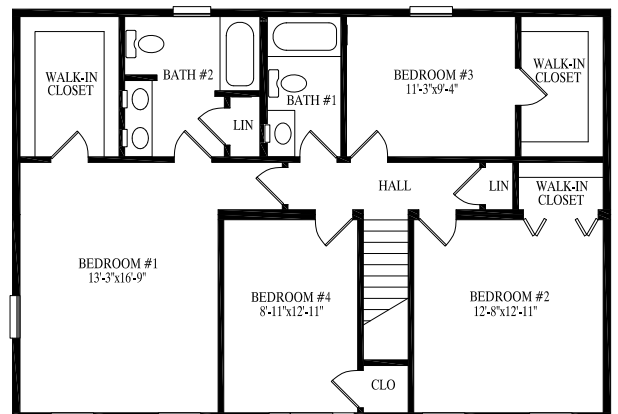
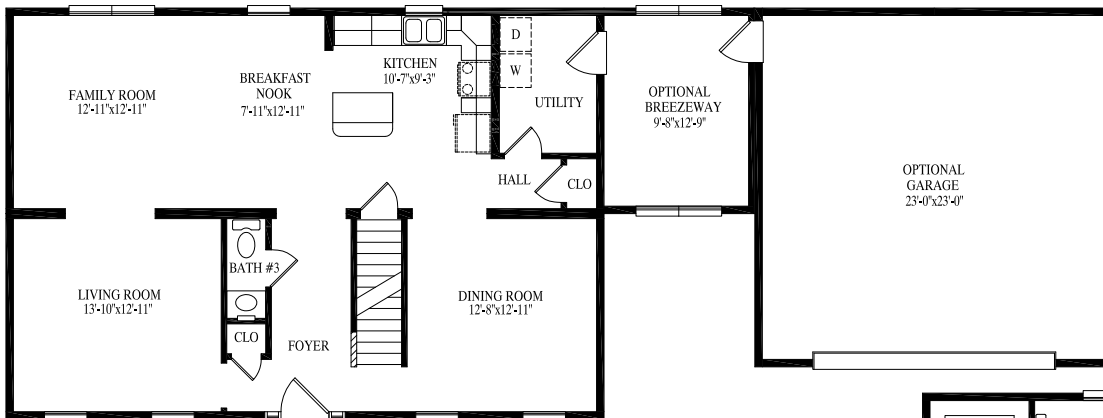


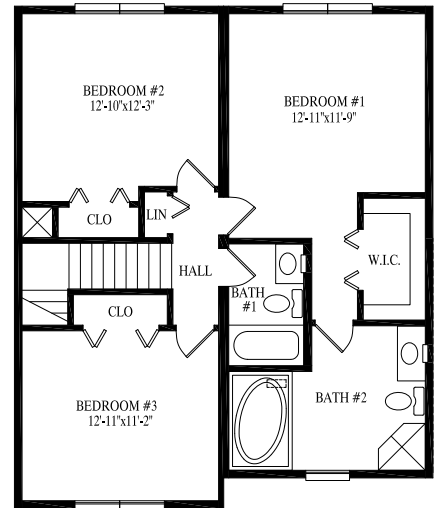
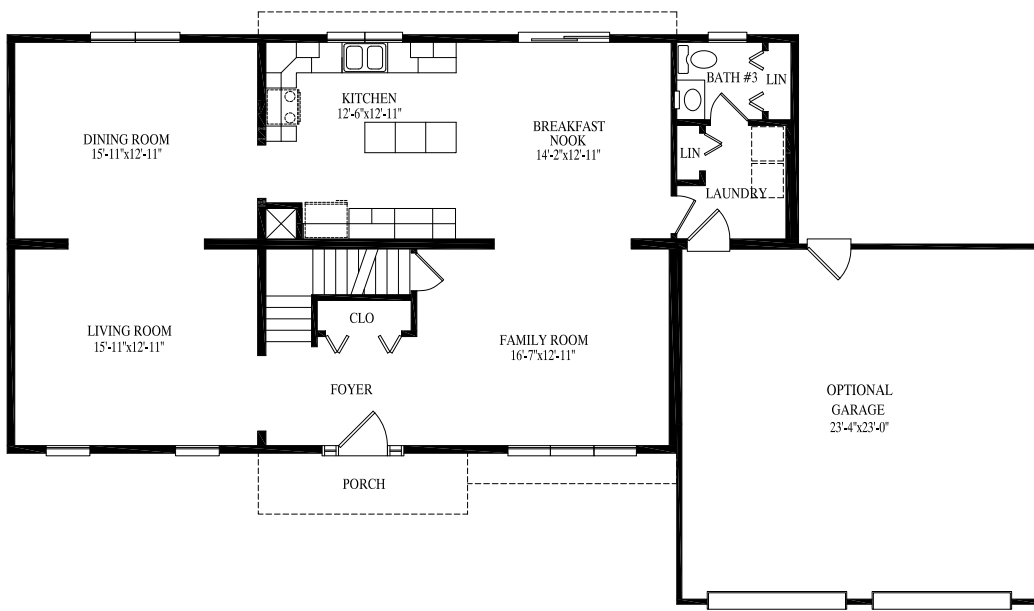
## Niagara

27' 6" x 40'  
1100 sq. ft. 1st floor

27' 6" x 40'  
1100 sq. ft. 2nd floor

2200 total sq. ft.





## Schuylkill

27' 6" x 52'  
1326 sq. ft. 1st floor

27' 6" x 33'  
880 sq. ft. 2nd floor

2206 total sq. ft.



# SCHUYLKILL

# COVINGTON

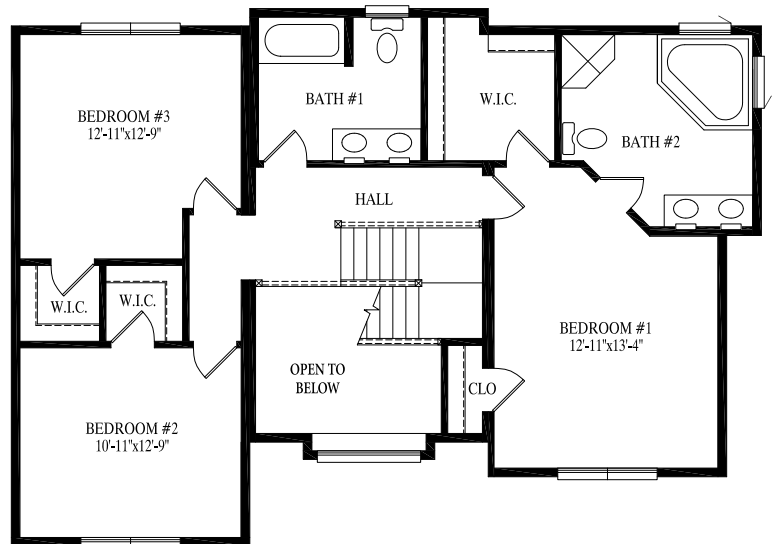
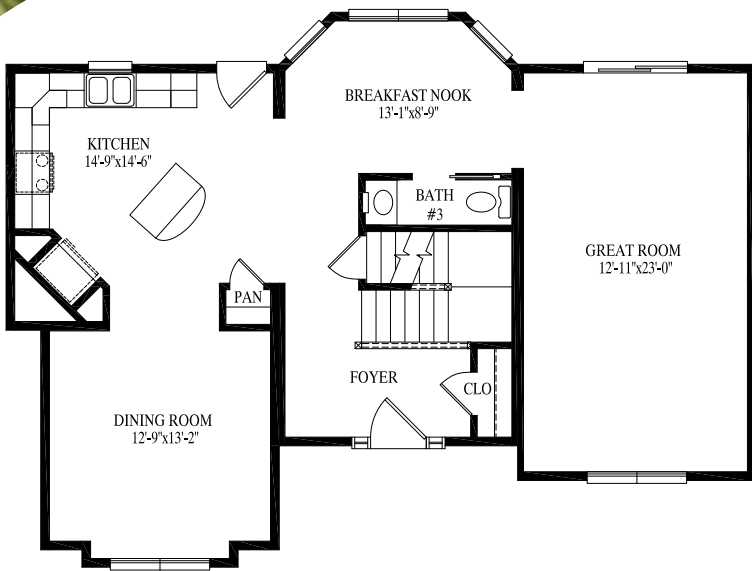


## Covington

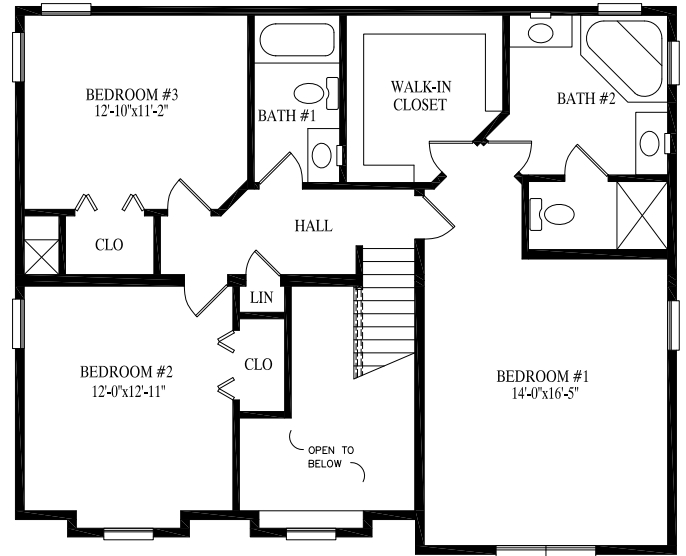
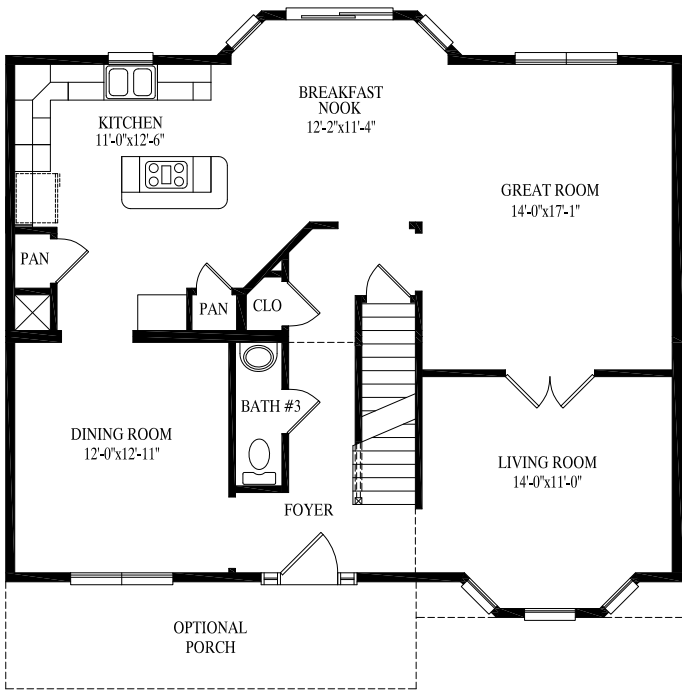
28' x 43' 3"  
1090 sq. ft. 1st floor

30' x 43' 3"  
1138 sq. ft. 2nd floor

2228 total sq. ft.







## Roosevelt

34' x 38'  
 1166 sq. ft. 1st floor  
 31' 6" x 38'  
 1165 sq. ft. 2nd floor  
 2331 total sq. ft.



# ROOSEVELT

# STONEFIELD

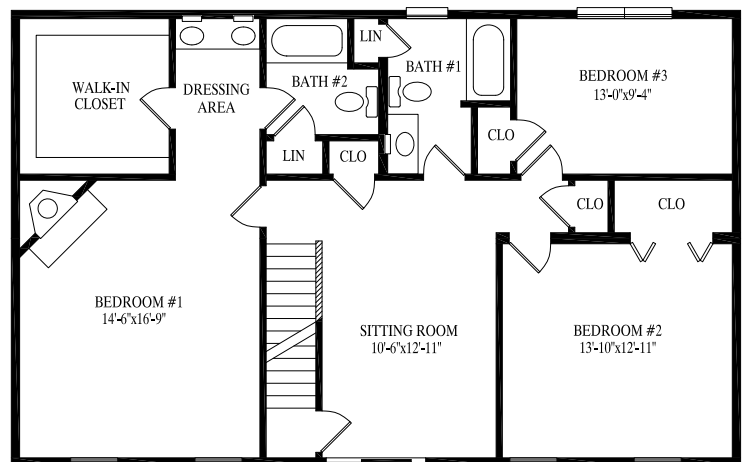
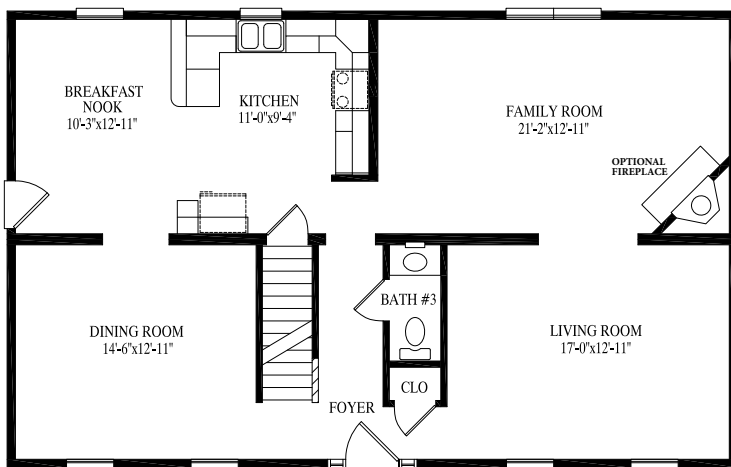


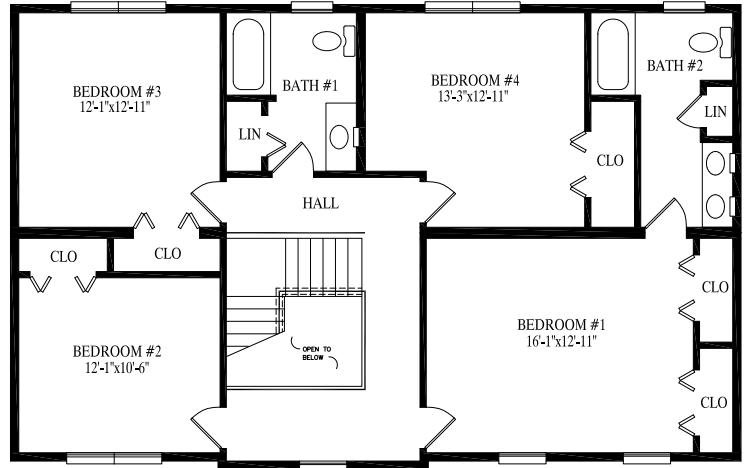
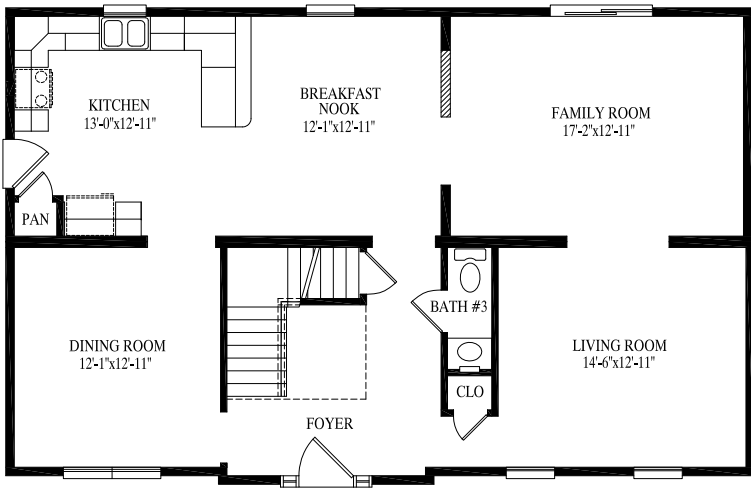
## Stonefield

27' 6" x 44'  
1210 sq. ft. 1st floor

27' 6" x 44'  
1210 sq. ft. 2nd floor

2420 total sq. ft.





**Tidwell**

27' 6" x 44'  
1217 sq. ft. 1st floor

27' 6" x 44'  
1217 sq. ft. 2nd floor

2434 total sq. ft.



TIDWELL

# MONROE

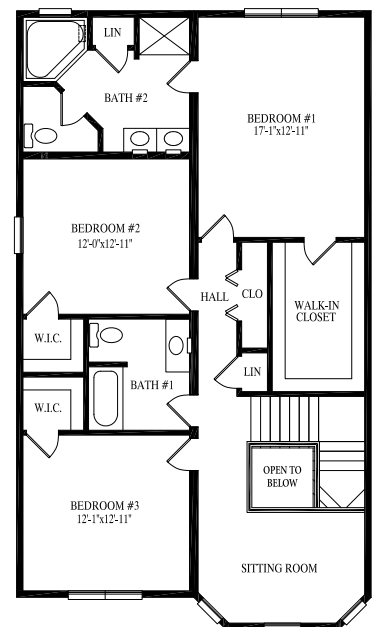
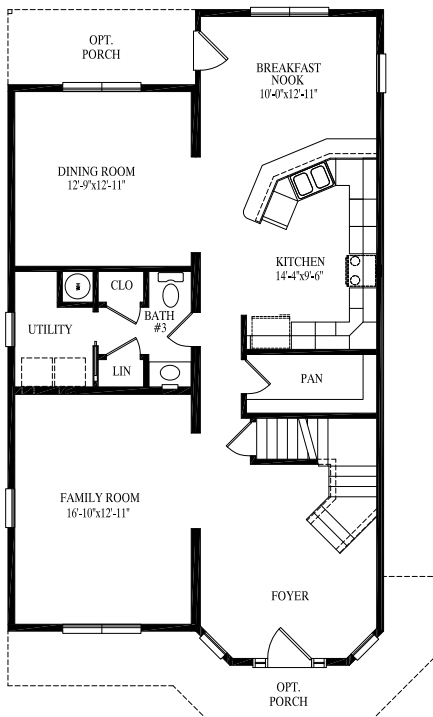


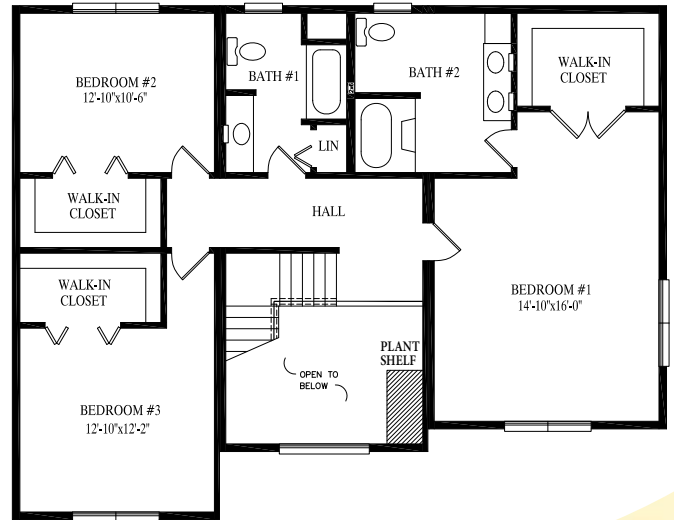
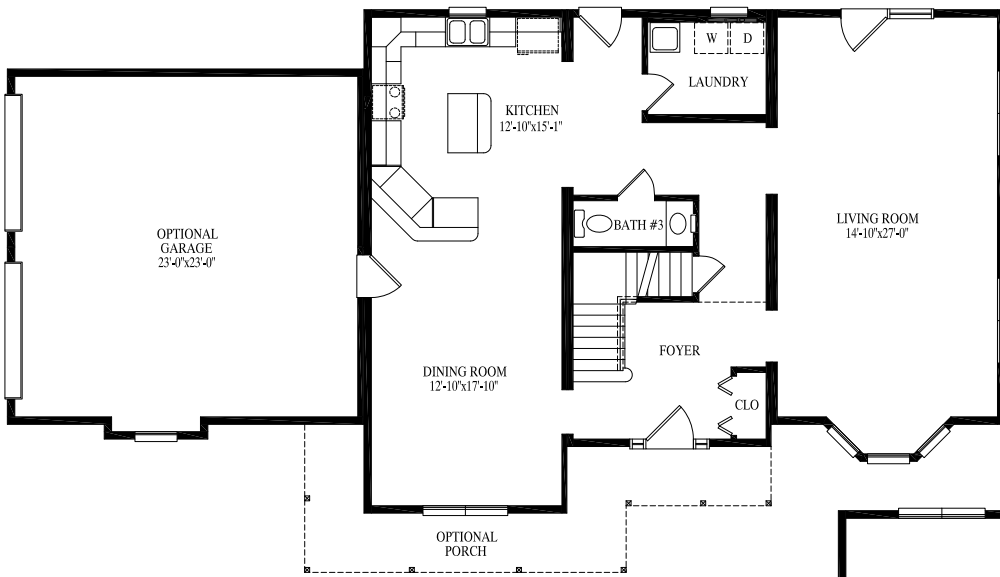
## Monroe

27' 6" x 40' / 48'  
1204 sq. ft. 1st floor

27' 6" x 45' 6" / 48'  
1280 sq. ft. 2nd floor

2484 total sq. ft.





## Berkshire

34' x 43' 3"  
1331 sq. ft. 1st floor

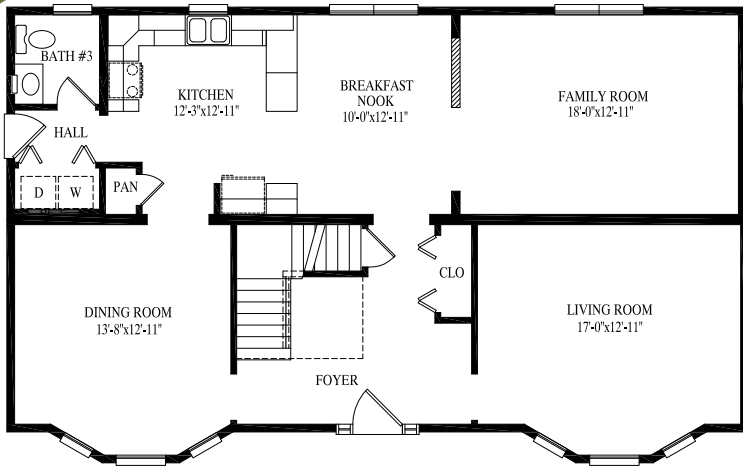
34' x 43' 3"  
1315 sq. ft. 2nd floor

2646 total sq. ft.



# BERKSHIRE

# BRIDGEPORT

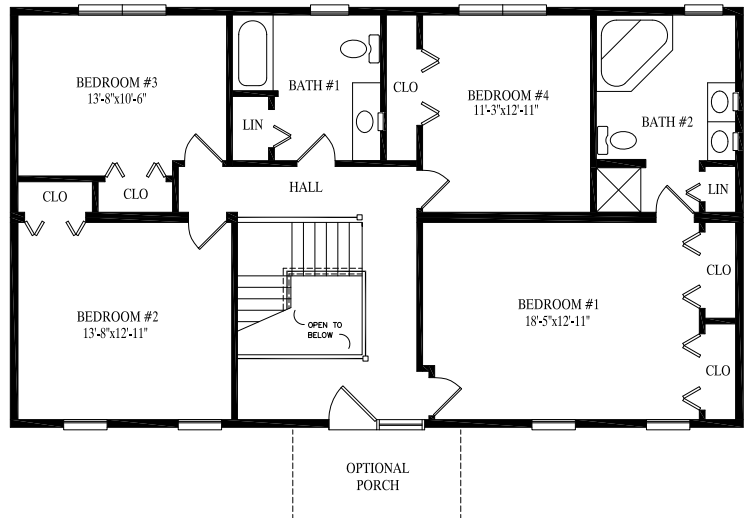


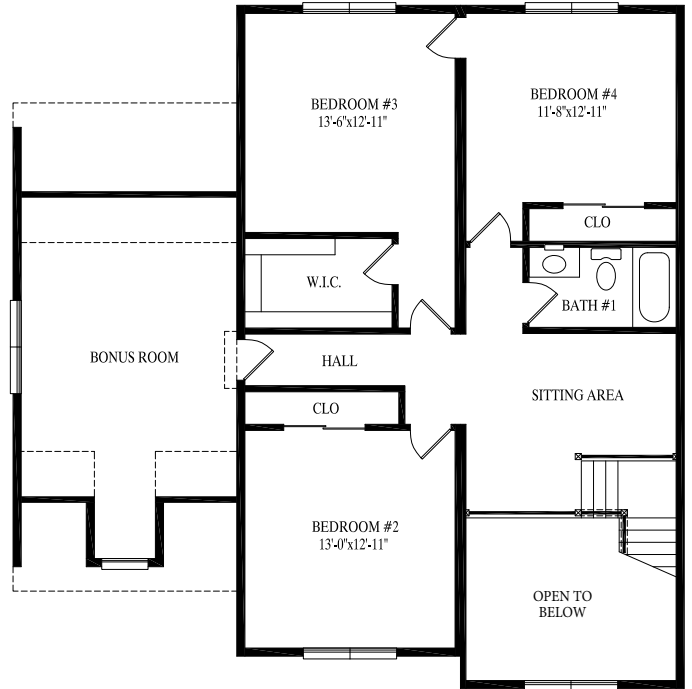
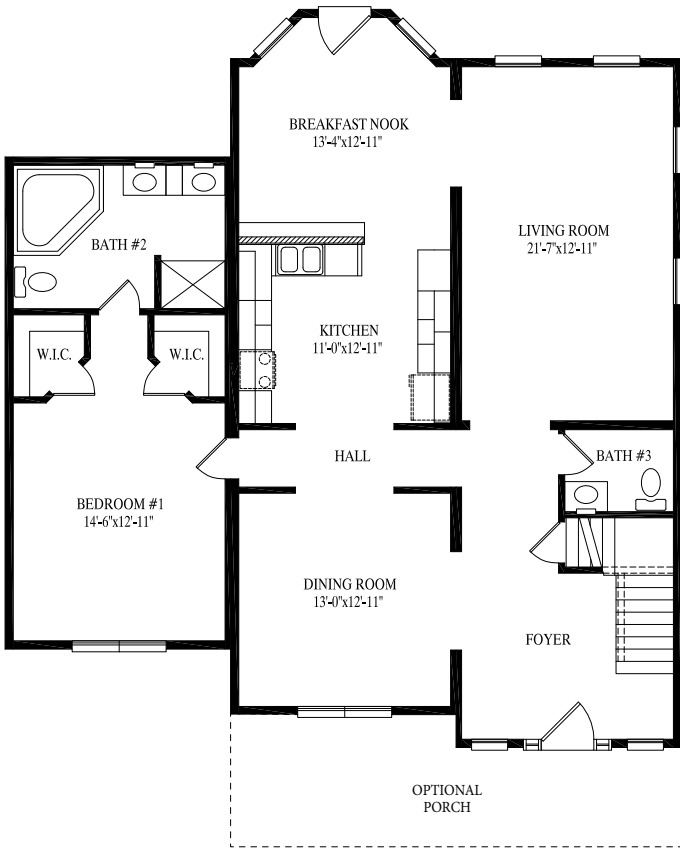
## Bridgeport

29' 6" x 48'  
1357 sq. ft. 1st floor

27' 6" x 48'  
1320 sq. ft. 2nd floor

2677 total sq. ft.





## Hilshire

45' x 41' 3"  
1566 sq. ft. 1st floor

42' x 41' 3"  
1128 sq. ft. 2nd floor

2694 total sq. ft.



# HILSHIRE

# KENSINGTON

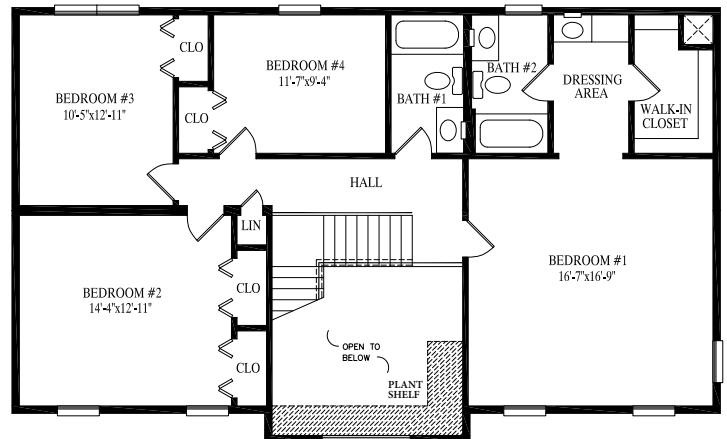
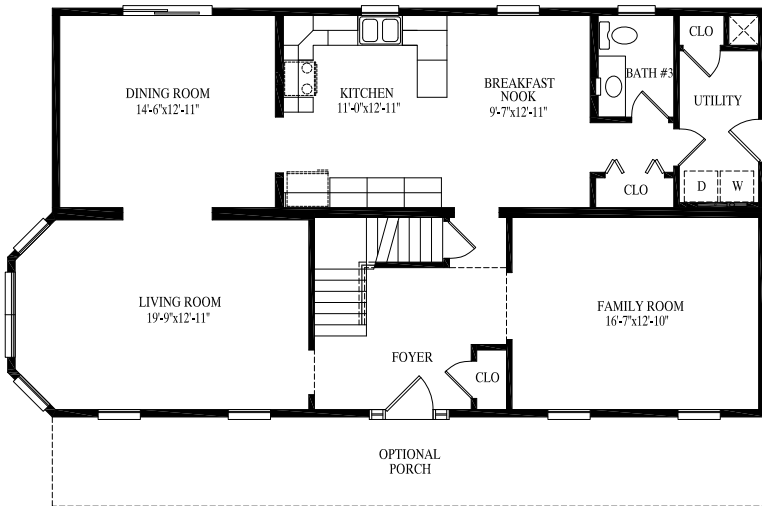


## Kensington

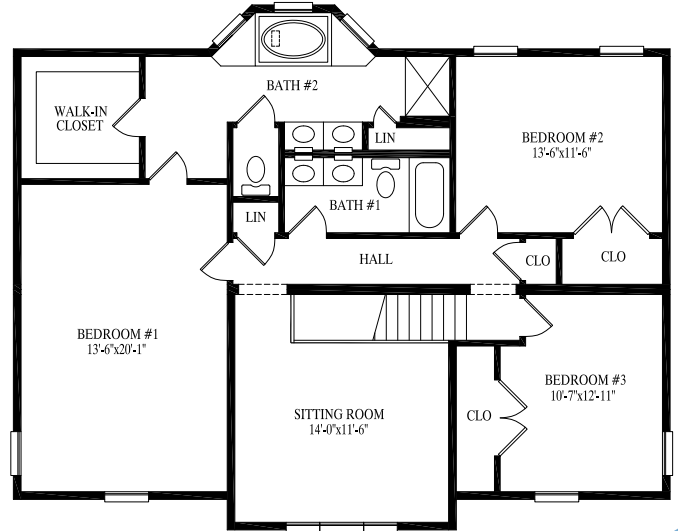
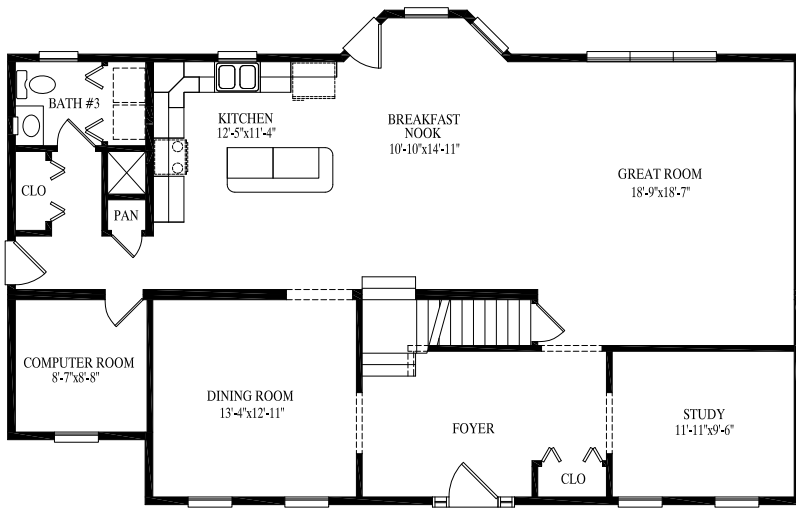
27' 6" x 51'  
1353 sq. ft. 1st floor

29' 6" x 48'  
1348 sq. ft. 2nd floor

2701 total sq. ft.







## Fayette

32' 4 1/2" x 52'  
1520 sq. ft. 1st floor

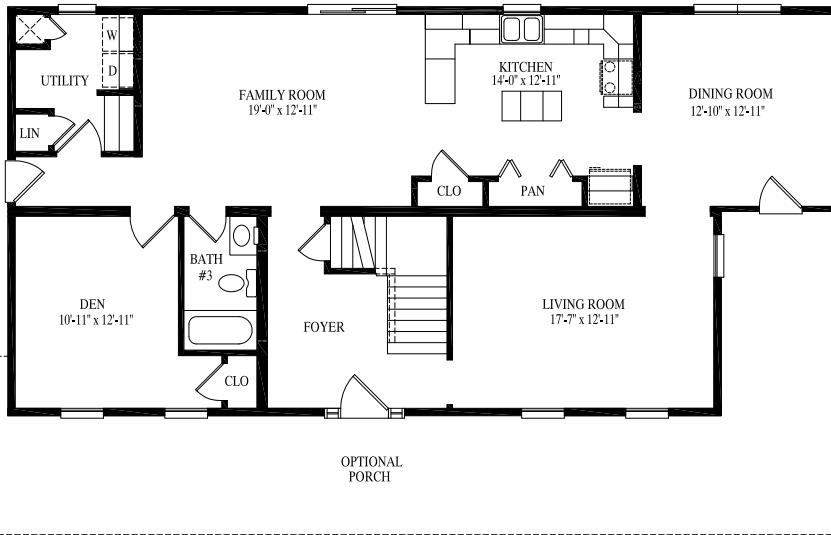
34' 4 1/2" x 43'  
1323 sq. ft. 2nd floor

2843 total sq. ft.



FAYETTE

# MONTGOMERY

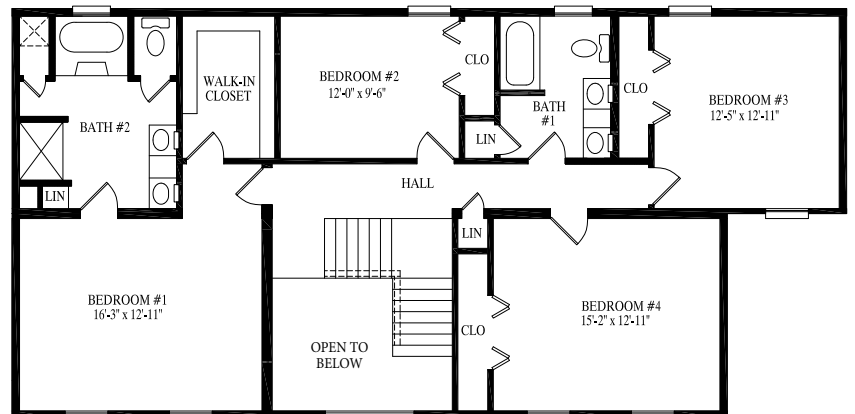


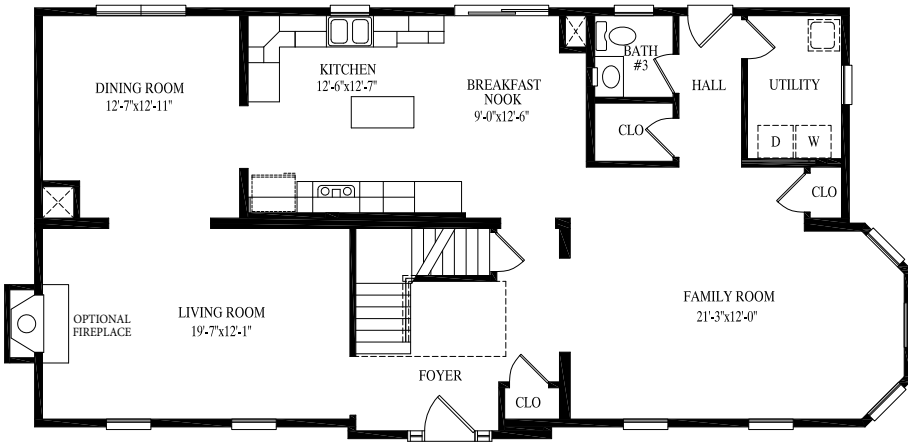
## Montgomery

27' 6" x 56'  
1430 sq. ft. 1st floor

27' 6" x 56'  
1430 sq. ft. 2nd floor

2860 total sq. ft.



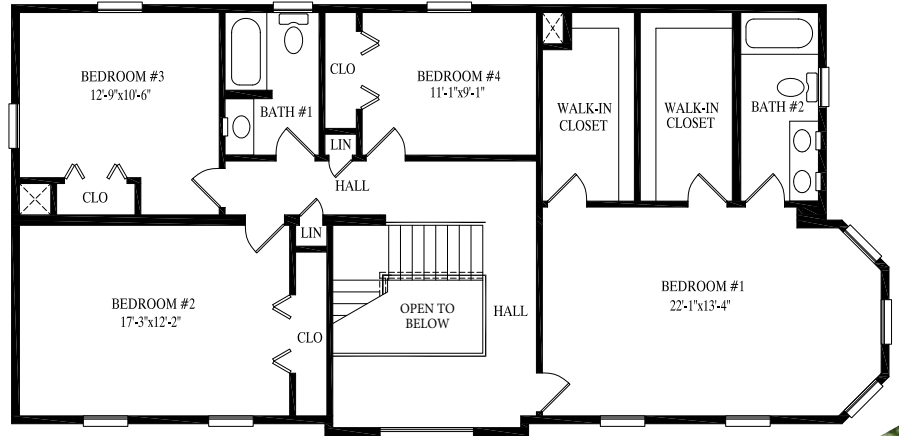


## Magnolia

27' 6" x 56'  
1444 sq. ft. 1st floor

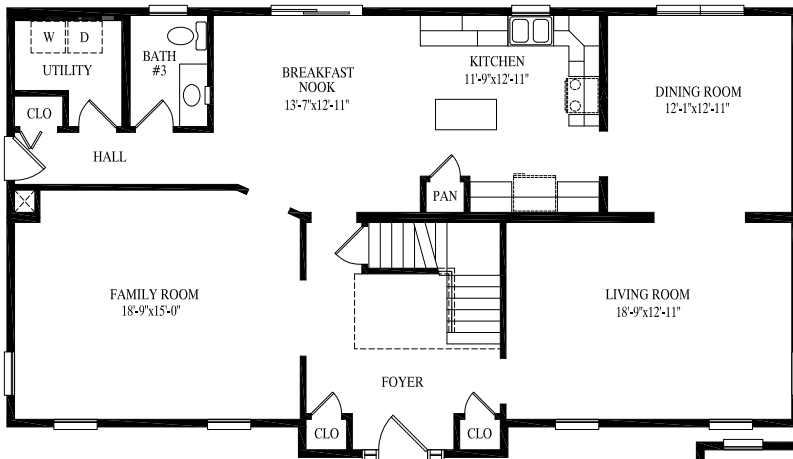
27' 6" x 56'  
1444 sq. ft. 2nd floor

2888 total sq. ft.



MAGNOLIA

# SIERRA

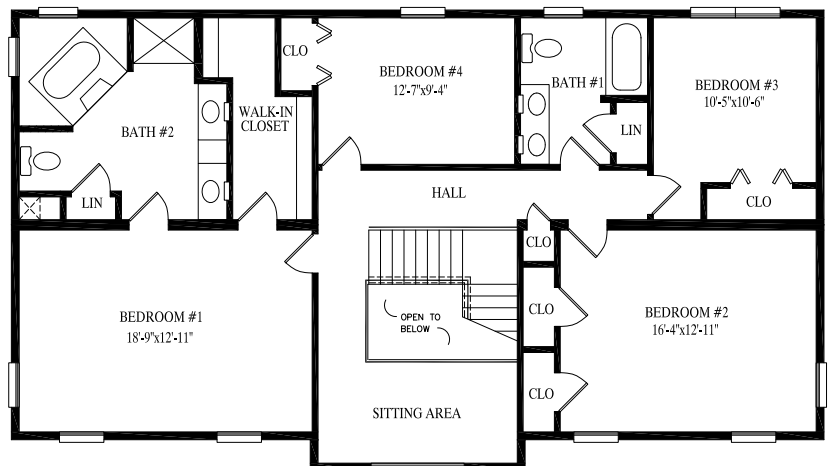


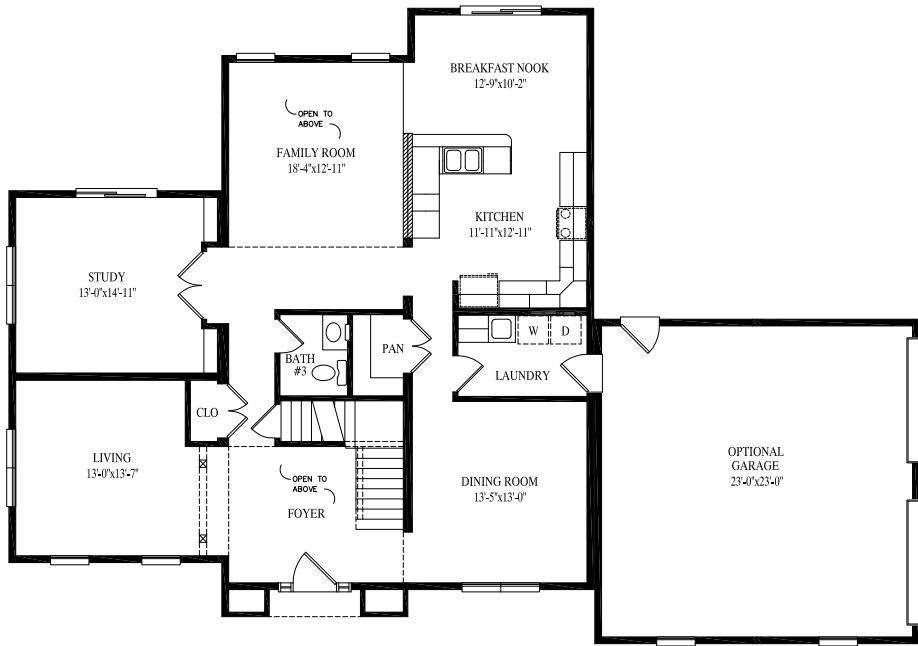
## Sierra

29' 6" x 52'  
1459 sq. ft. 1st floor

29' 6" x 52'  
1459 sq. ft. 2nd floor

2918 total sq. ft.



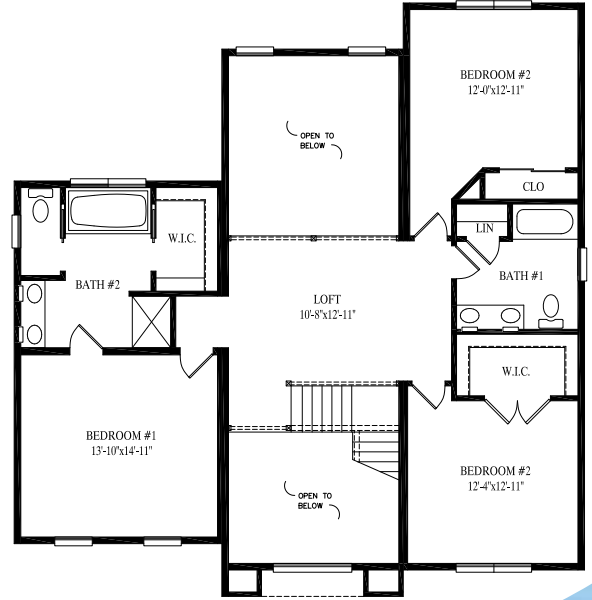


## Springfield

45' x 43' 3"  
1582 sq. ft. 1st floor

45' x 43' 3"  
1582 sq. ft. 2nd floor

3164 total sq. ft.



# SPRINGFIELD

# BROOKMERE



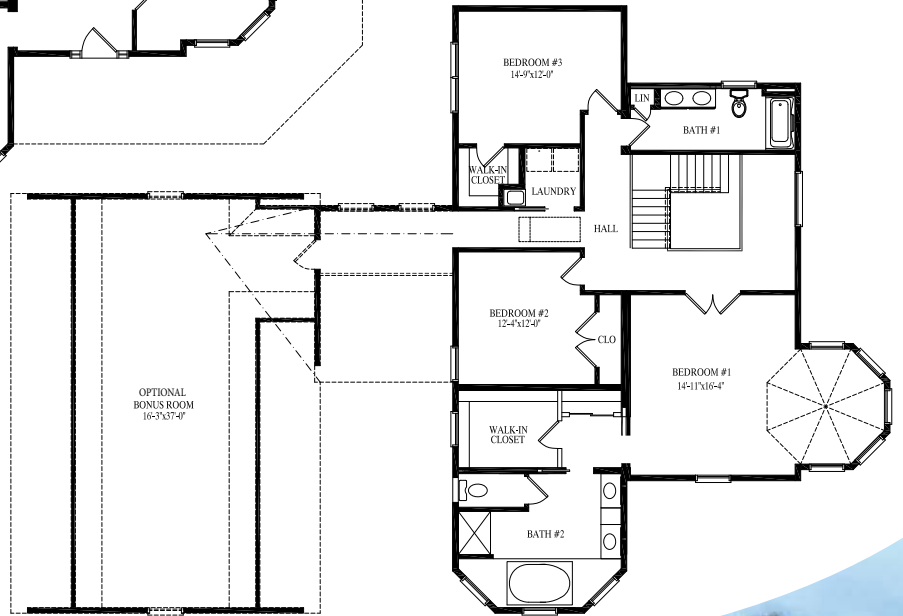
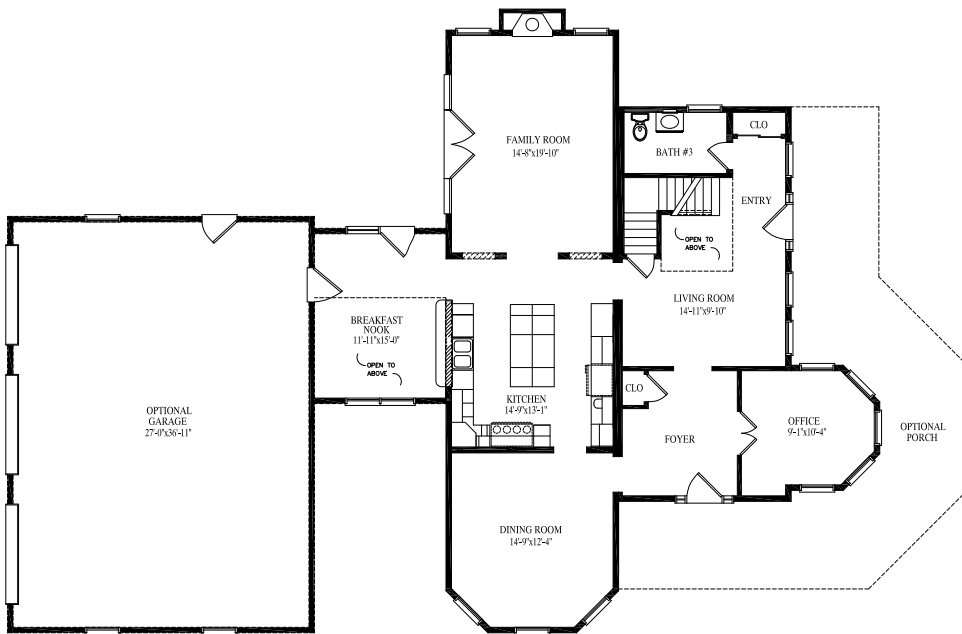
## Brookmere

45' x 43' 3"  
1463 sq. ft. 1st floor

40' 6" x 43' 3"  
1148 sq. ft. 2nd floor

3187 total sq. ft.





## Devonshire

55' x 51' 7"  
1693 sq. ft. 1st floor

55' x 39' 7"  
1500 sq. ft. 2nd floor

3193 total sq. ft.



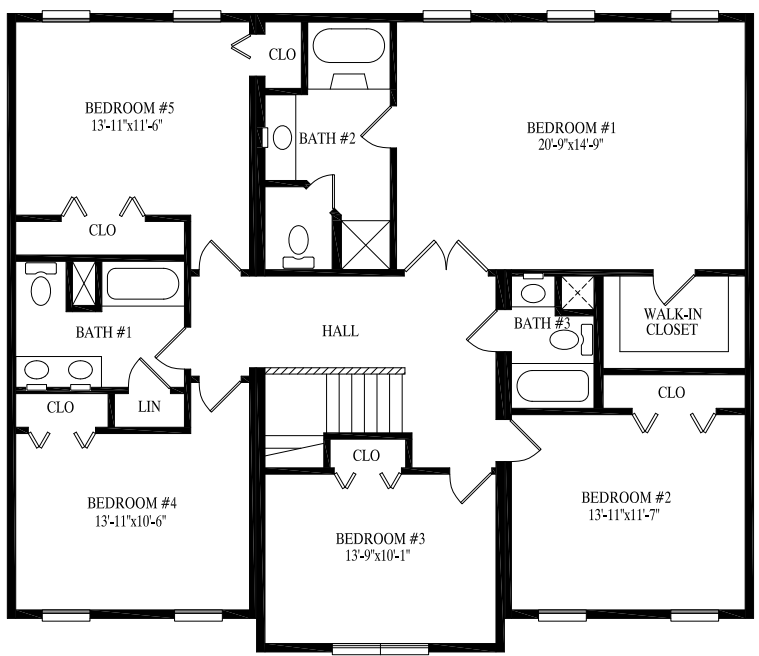
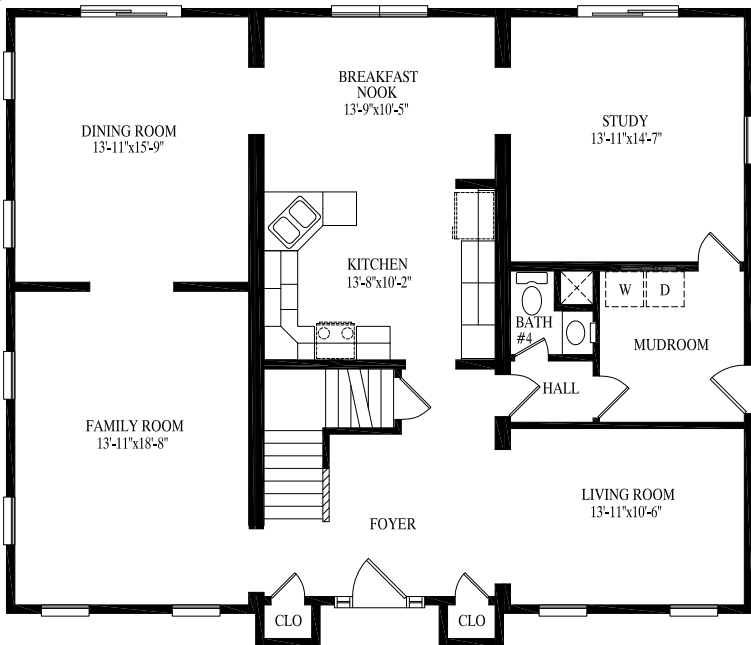
# DEVONSHIRE

# MEADOWVIEW

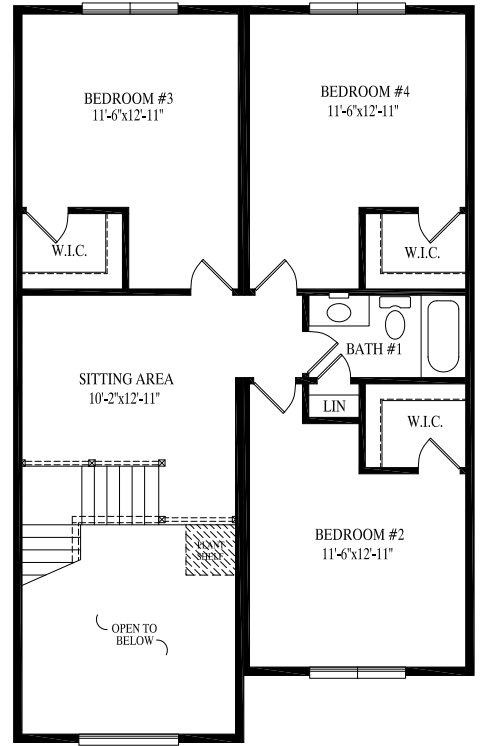
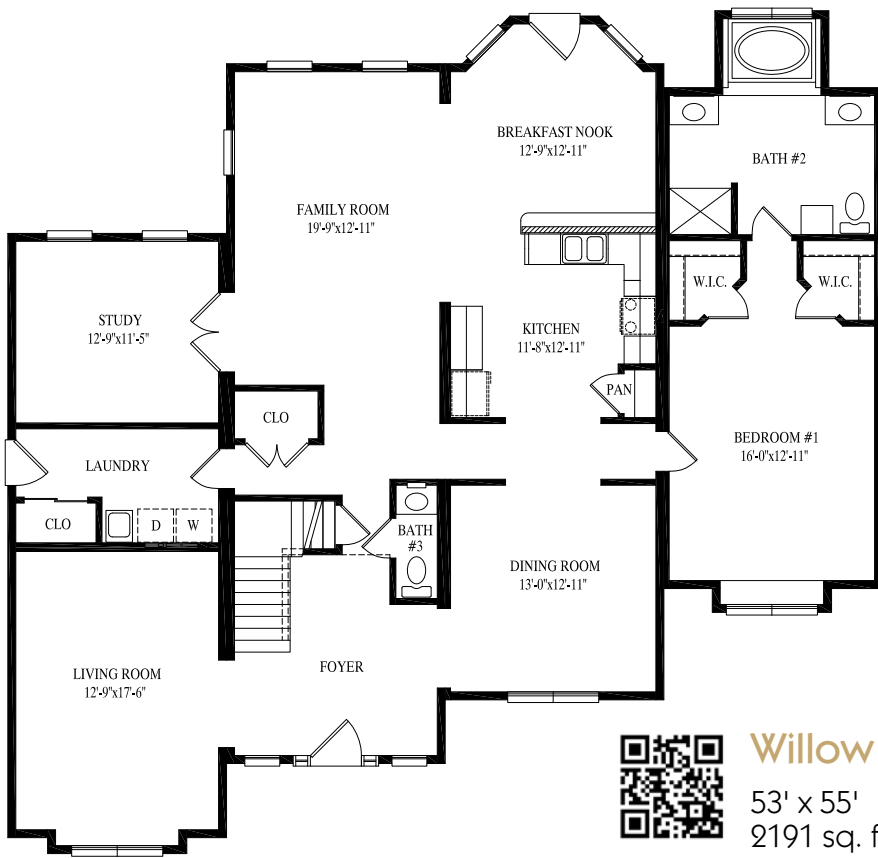


## Meadowview

33' x 44' 5"  
1611 sq. ft. 1st floor  
33' x 44' 5"  
1629 sq. ft. 2nd floor  
3240 total sq. ft.







## Willow

53' x 55'  
2191 sq. ft. 1st floor

44' x 27' 6"  
1155 sq. ft. 2nd floor

3346 total sq. ft.



# WILLOW

# WESTMORELAND

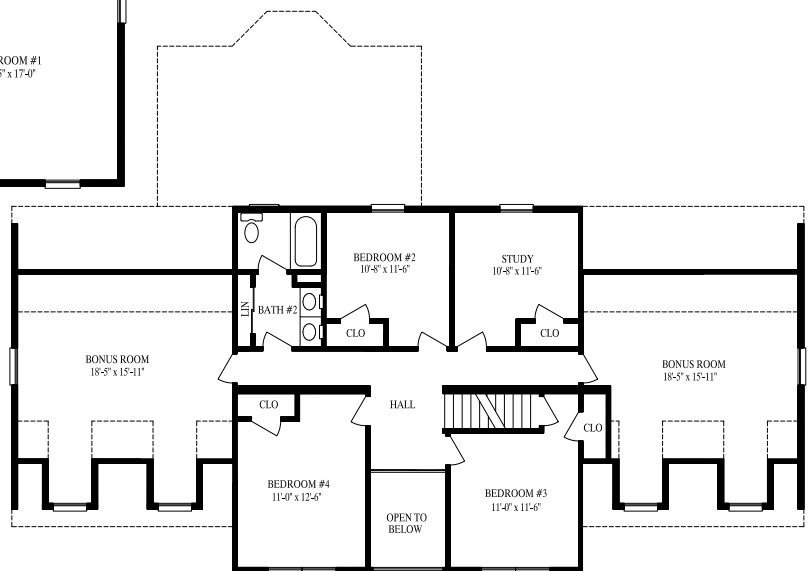


## Westmoreland

48' 3" x 68'  
2323 sq. ft. 1st floor

31' 6" x 68'  
1650 sq. ft. 2nd floor

3973 total sq. ft.



# Popular Exterior Options...



Single Unit Extension



Bump Out



Reverse Gable



Reverse Gable w/Extension



Dormers



Set Back



Decorative Shingle Return



Shed Dormer



Porch Roof

## Great Homes Start With Quality Products...



NOTE: All renderings are artist's concepts only and may vary from actual home.



**Professional Building Systems, Inc.**

72 East Market Street

Middleburg, PA 17842

Phone (570) 837-1424

Fax (570) 837-6133

[www.pbsmodular.com](http://www.pbsmodular.com)

Your PBS Builder/Developer

Builders/Developers are not agents of Professional Building Systems.